

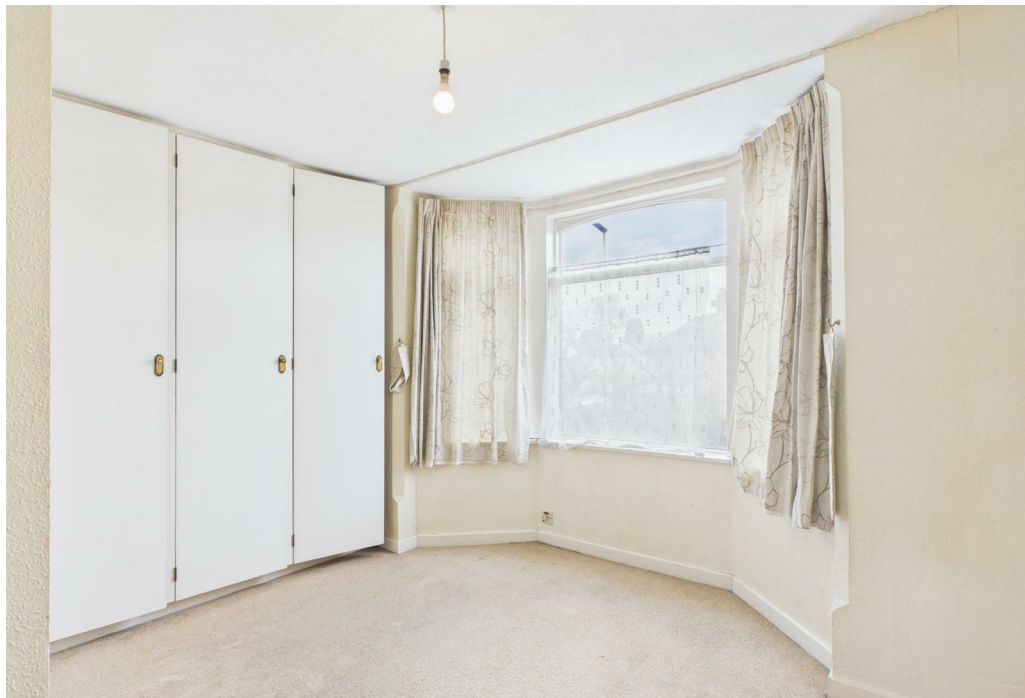
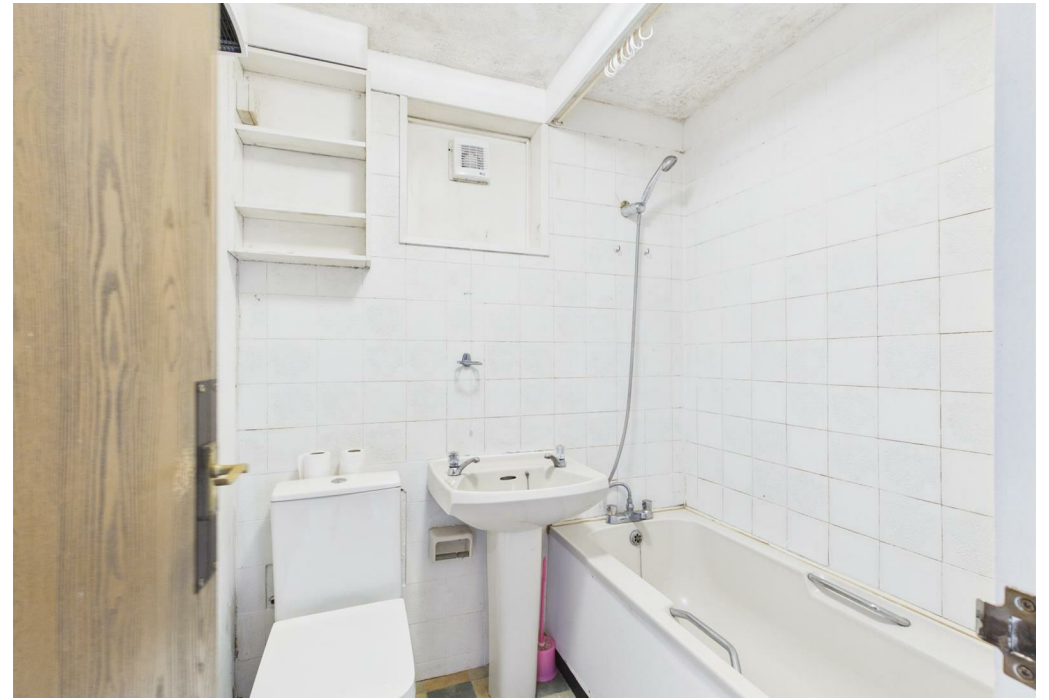


Uppingham Road, Leicester, LE5 4BP

Property Description

****AVAILABLE NOW**** Nestled in the desirable area of Uppingham Road, Leicester, with its historical features, the property is both inviting and characterful, making it a perfect home for those who appreciate traditional features. The property comprises of a living area, a kitchen, one bedroom, one bathroom and a reception room. The house boasts an off road parking space, a rare find in this desirable location, with local schools, shops and other essential services and has strong public transport links to the City Centre. The property is well-suited for individuals or couples. Council Tax Band A. Energy Rating E





Key Features

- Available now
- North Evington Area
- Flat
- One Bedroom
- Unfurnished
- Off Road Parking
- No garden
- Council Tax Band A
- Energy Rating E

£665 PCM