



Rusper Road, Ifield

Guide Price £675,000 - £700,000

**MANSELL
McTAGGART**
Trusted since 1947



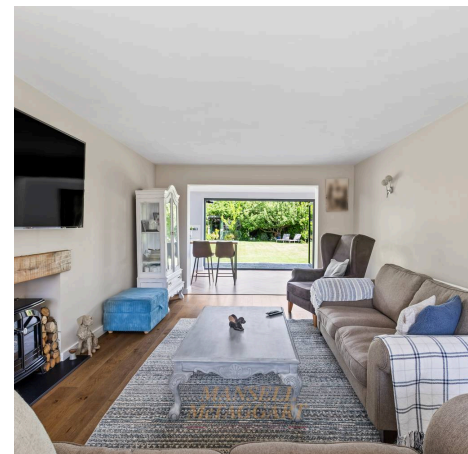
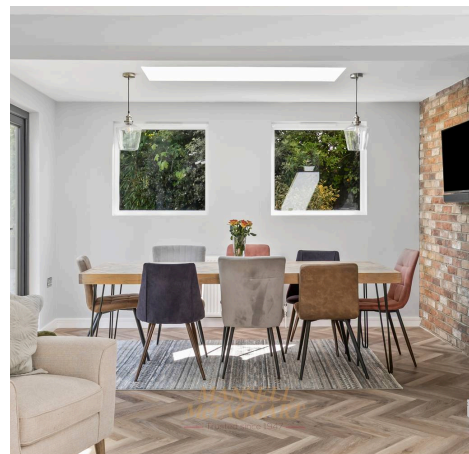


- Complete chain above
- Council Tax Band 'E' and EPC 'C'

Tucked away on the highly desirable Rusper Road, this beautifully extended and upgraded three/four bedroom detached family home offers both elegance and comfort, set back from the road within a peaceful close. The property sits on a large corner plot, providing a sense of privacy and seclusion, especially with its tranquil outlook backing directly onto allotments.

Upon entering via an enclosed porch with storage for shoes and coats, you are then welcomed into a generous hallway that leads to a stylish living room, perfect for relaxing evenings or entertaining guests featuring a log burner and large window to the front aspect. To the left of the hallway is an additional reception room, currently used as a family room, but could easily become a ground floor bedroom, play room or large office for those working from home.

The heart of the home is undoubtedly the stunning open plan kitchen, family, and dining room, which has been thoughtfully designed and extended to create a bright and inviting space for every-day living and special occasions alike. The kitchen features modern cabinetry, quality appliances, and a large central island, seamlessly flowing into the dining area with views over the rear garden and access via the bi-folding doors. There is ample room for a large dining table and chairs as well as a seating area for more casual dining and socialising. Capping off this extraordinary space is an indoor bar with seating. Completing the downstairs accommodation is also a practical utility room and a sleek downstairs shower room, adding flexibility and convenience for busy family life.





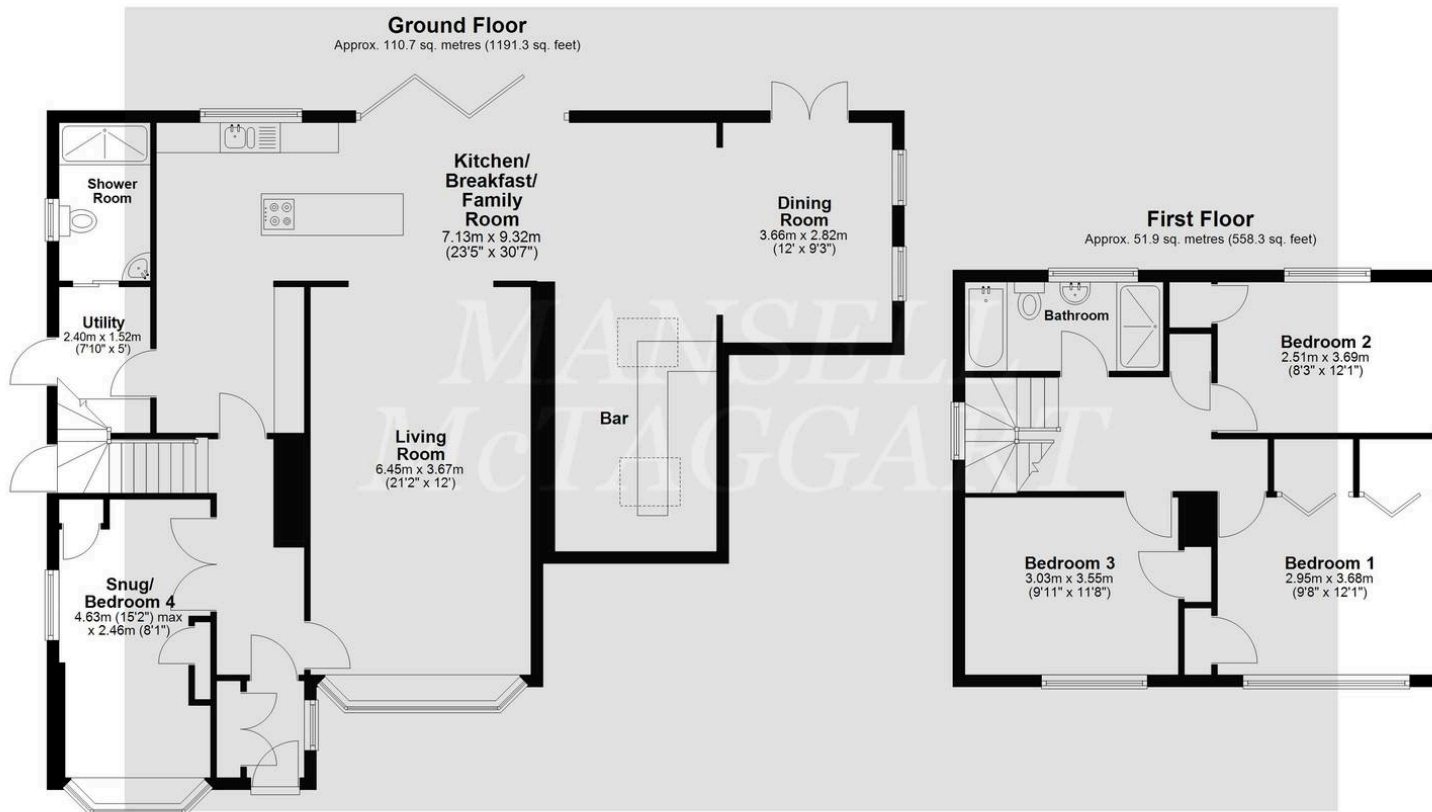
Upstairs, the first floor offers three further double bedrooms, each finished to a high standard with ample space for furnishings, all coming equipped with additional built-in storage. The family bathroom is equally impressive, with modern fittings comprising of both a panelled bath and separate walk-in shower unit, WC, pedestal wash hand basin and opaque window to rear.

Outside

The property benefits from driveway parking to the front, providing both convenience and security with further parking available within this peaceful close. Additionally, there is a small area of lawn and side access. The outside space is a true highlight of this property, offering a rare combination of privacy and openness thanks to its unique position backing onto allotments. The generous corner plot allows for expansive gardens that wrap around the home, providing multiple areas for relaxation, play, and entertaining. Mature trees and well-tended borders create a lush and tranquil setting, while the large lawn offers plenty of space for children or pets to enjoy outdoor activities. A spacious patio area is perfect for al fresco dining or summer barbeques, easily accessed from the kitchen and dining areas, making indoor-outdoor living a breeze.

With a complete chain above, this home is ready for its next owners to move straight in and begin enjoying its many features.





Total area: approx. 162.6 sq. metres (1749.7 sq. feet)

Whilst every attempt has been made to ensure the accuracy of the floor plan contained here, measurements of doors, windows, rooms, and any other item are approximate, and no responsibility is taken for any error, omission, or misstatement. This plan is for illustrative purposes only, and should only be used as such by any prospective buyer. Plan produced using PlanUp.

Mansell McTaggart Crawley

35 The Broadway, West Sussex – RH10 1HD

01293 533333

crawley@mansellmctaggart.co.uk

www.mansellmctaggart.co.uk/branch/crawley/

Consumer Protection from Unfair Trading Regulations 2008 We have not tested any apparatus, equipment, fixtures, fittings or services and so cannot verify that they are in working order or fit for purpose. You are advised to obtain verification from your solicitor or surveyor. References to the tenure of a property are based on information supplied by the seller. We have not had sight of the title documents and a buyer is advised to obtain verification from their solicitor. Items shown in photographs are not included unless specifically mentioned within the sales particulars, but may be available by separate negotiation.