



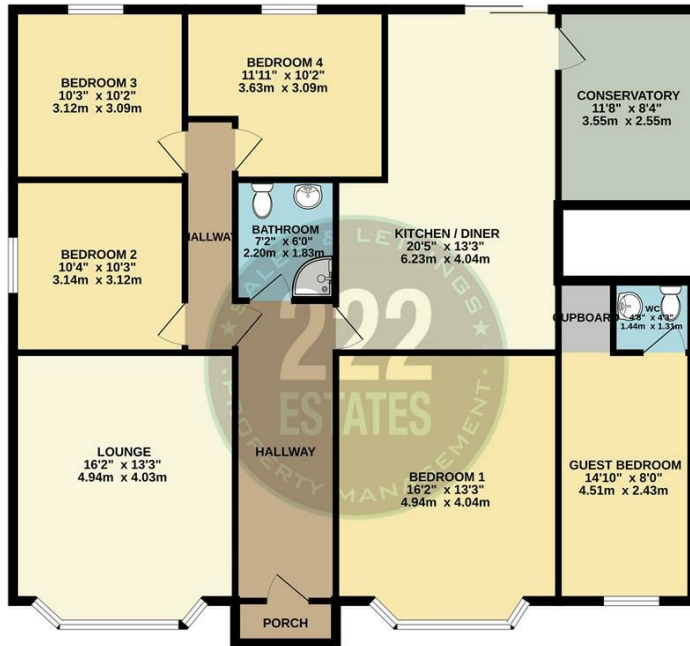
10 ELIZABETH DRIVE WARRINGTON, WA1 4JQ

£320,000
FREEHOLD

Nestled on Elizabeth Drive in the desirable area of Padgate, Warrington, this charming detached bungalow presents an exceptional opportunity for those seeking a spacious and adaptable home. With 4 well-proportioned bedrooms and a versatile layout, this property is perfect for families, downsizers, or anyone looking to invest in a home with potential for personalisation.



GROUND FLOOR
1433 sq.ft. (133.1 sq.m.) approx.



4/5 BEDROOM BUNGALOW
TOTAL FLOOR AREA - 1433 sq ft. (133.1 sq.m.) approx.
Whilst every attempt has been made to ensure the accuracy of the floorplan contained here, measurements of doors, windows, rooms and any other items are approximate and no responsibility is taken for any error, omission or mis-statement. This plan is for illustrative purposes only and should be used as such by any prospective purchaser. The services, systems and appliances shown have not been tested and no guarantee as to their quantity or efficiency can be given.
Made with Metropix 02026



Energy Efficiency Rating		
	Current	Potential
Very energy efficient - lower running costs		
(92 plus) A		
(81-91) B		
(69-80) C		
(55-68) D		
(39-54) E		
(21-38) F		
(1-20) G		
Not energy efficient - higher running costs		
England & Wales	EU Directive 2002/91/EC	

Agents Note: Whilst every care has been taken to prepare these particulars, they are for guidance purposes only. All measurements are approximate and are for general guidance purposes only and whilst every care has been taken to ensure their accuracy, they should not be relied upon and potential buyers/tenants are advised to recheck the measurements

222 Estates Lettings and Sales
222 Orford Lane Orford
Warrington
Cheshire
WA2 7BB

01925 499599
info@222estates.co.uk
www.222estates.co.uk

