

Property ref: 128616

Cygnets House, Reading, RG2 0NX

£1,600 PCM

HASLAM'S
Lettings



This stunning third floor two bedroom apartment enjoys a prime position within the highly sought after Kennet Island development by Berkeley Homes.

Reading Borough Council tax band C.

Broadband/Mobile Info: Connections available. For an indication of specific speeds and supply of Broadband and Mobile, we advise applicants go to the Ofcom website 'Broadband and Mobile Coverage Checker'.

Available 13/07/2026

- Two bedrooms; Master with en-suite shower
- Living room with West facing balcony; Electric heating
- Well-defined kitchen area with granite work surfaces and appliances
- Contemporary style three piece suite with shower; EPC rating C
- One allocated undercroft parking space; Entry phone system
- Furnished; Managed by LANDLORD

*Fees For Assured Shorthold Tenancies: when you rent a property from us you will be required to pay a sum equivalent to one weeks' rent for a holding deposit. Upon successful application, this amount will be off set against your first months' rent. You will also be required to pay a security deposit equivalent to 5 weeks' rent which will be held and protected in line with Deposit legislation. For more information about our fees please visit: www.haslams.net
Fees for all other tenancies (Non Housing Act Tenancies / Company Lets): when you rent a property from us we will charge you a one-off fee per property. This charge is the equivalent of 15 days of the monthly rental charge (+VAT) with a minimum fee of £450 (inc.VAT) up to a maximum of £650 (inc.VAT). Other fees may apply depending on your circumstances.

0118 960 1055

lettings@haslams.net www.haslams.net

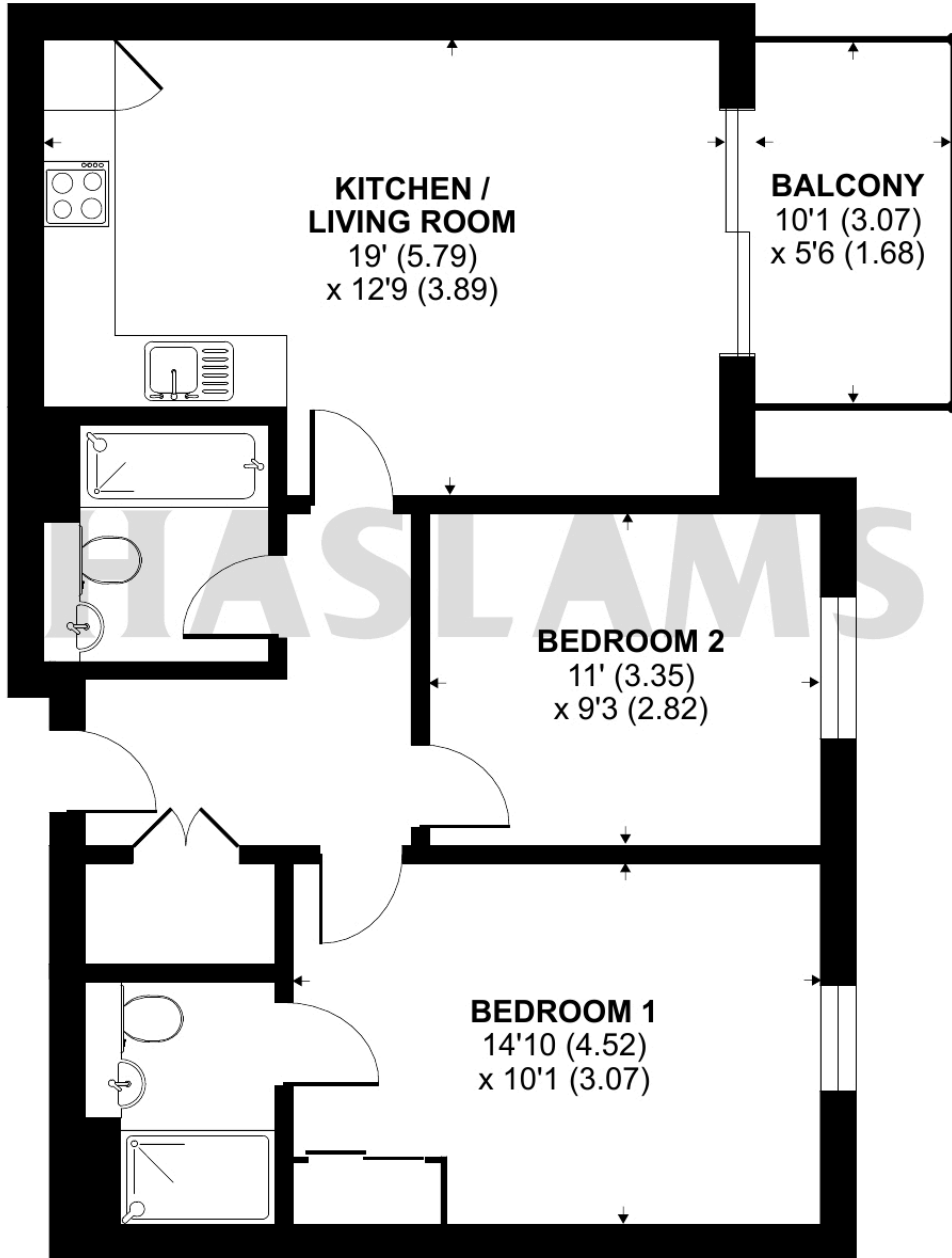
Haslams Estate Agents Ltd, 159 Friar Street, Reading, Berkshire, RG1 1HE



Drake Way, Reading, RG2

Approximate Area = 672 sq ft / 62.4 sq m

For identification only - Not to scale



THIRD FLOOR



Floor plan produced in accordance with RICS Property Measurement Standards incorporating International Property Measurement Standards (IPMS2 Residential). © n1cheom 2024. Produced for Haslams. REF: 1123593