

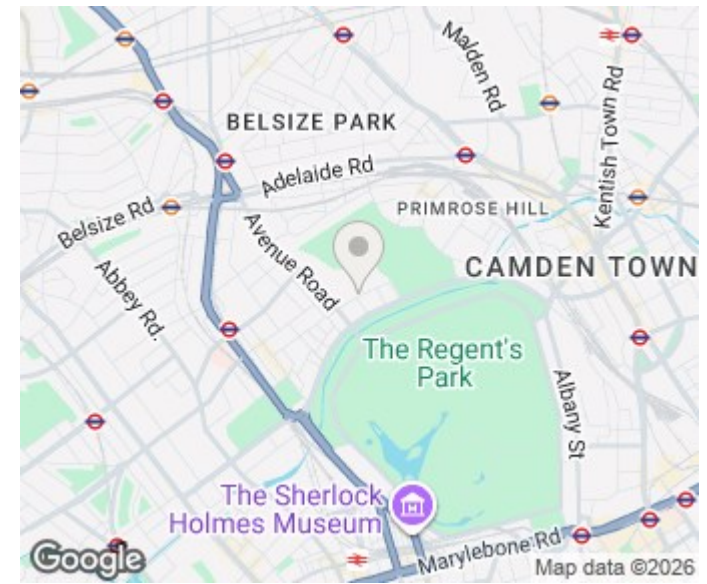
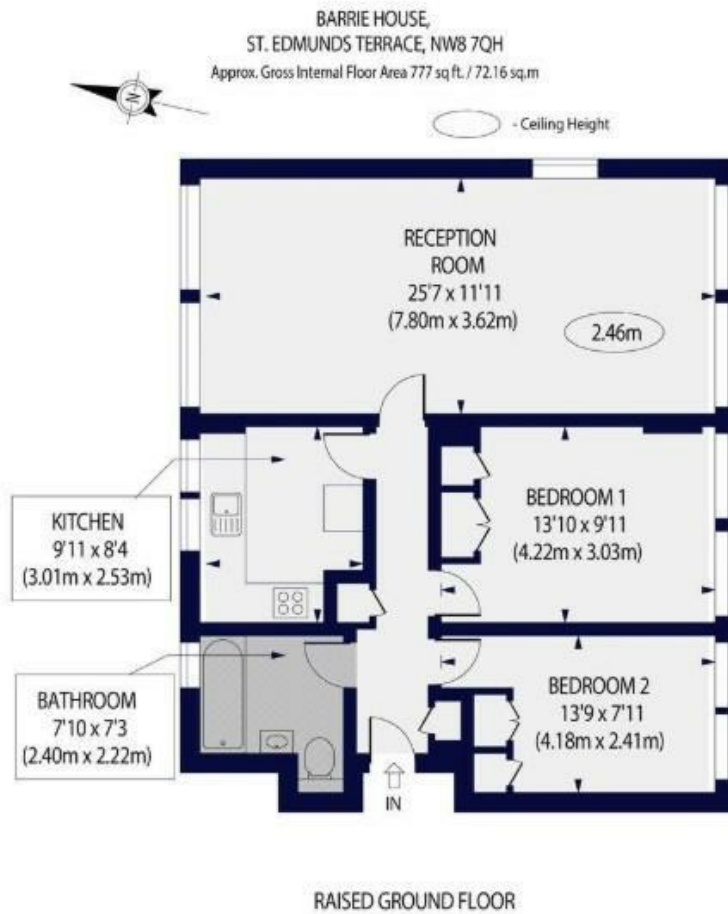
ST. EDMUNDS TERRACE

LONDON, NW8

£2,900 PER MONTH

A well presented and spacious two bedroom ground floor apartment, in this purpose built block on St Edmunds Terrace, the property is presented in excellent condition. Barrie House is located between Regents Park & Primrose Hill (0.2 miles). The closest Underground Station is St Johns Wood (Jubilee Line) 0.6 miles away.

PMP | INTERNATIONAL



Energy Efficiency Rating		
	Current	Potential
Very energy efficient - lower running costs		
(92 plus) A		
(81-91) B		
(69-80) C		
(55-68) D	58	
(39-54) E		
(21-38) F		
(1-20) G		
Not energy efficient - higher running costs		
England & Wales	EU Directive 2002/91/EC	

Agents Note: Whilst every care has been taken to prepare these particulars, they are for guidance purposes only. All measurements are approximate and are for general guidance purposes only and whilst every care has been taken to ensure their accuracy, they should not be relied upon and potential buyers/tenants are advised to recheck the measurements

London
PMP International
94 Belsize Lane
Belsize Park
London
NW3 5BE

020 7701 2878
info@pmpi.co.uk
www.pmpi.co.uk

PMP | INTERNATIONAL