

MEON ROAD, W4

Approx. gross internal area 518 Sq Ft. / 48.1 Sq M

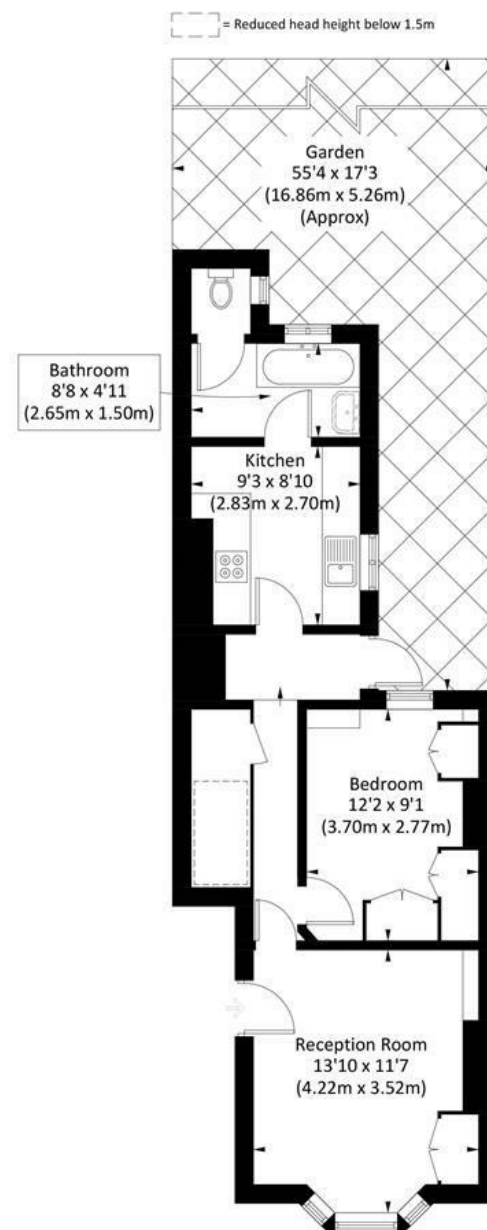


Illustration for identification purposes only, measurements are approximate, not to scale. FloorplansUsketch.com © 2025 (ID1262717)

DISCLAIMER•These particulars are intended to give a fair and substantially correct overall description for the guidance of intending purchasers and do not constitute an offer or part of a contract. Prospective purchasers and/or lessees ought to seek their own professional advice.

•All descriptions, dimensions, areas, references to condition and necessary permissions for use and occupation and other details are given in good faith and are believed to be correct, but any intending purchasers should not rely on them as statements or representations of fact, but must satisfy themselves by inspection or otherwise as to the correctness of each of them.

•All measurements are approximate.



Meon Road, London, W3

A beautifully presented one bedroom garden flat located on this quiet residential road in Acton. Offered on an unfurnished basis and benefitting from wood floors, the accommodation comprises an entrance hallway, bright reception room, double bedroom with an abundance of storage, galley style kitchen, smart bathroom with shower over the bath and a stunning, low maintenance private garden complete with a shed. Meon Road is conveniently located for Acton High Street, as well as the shops and amenities of Churchfield Road. There are easy transport links to central London, with South Acton and Acton Central overground stations close by. Available now.



- GARDEN FLAT
- GALLEY KITCHEN
- BATHROOM
- WOOD FLOORS
- EPC D
- RECEPTION ROOM
- DOUBLE BEDROOM
- PRIVATE GARDEN
- GREAT LOCATION
- COUNCIL TAX BAND D

Per Month
£1,650 Per Month

