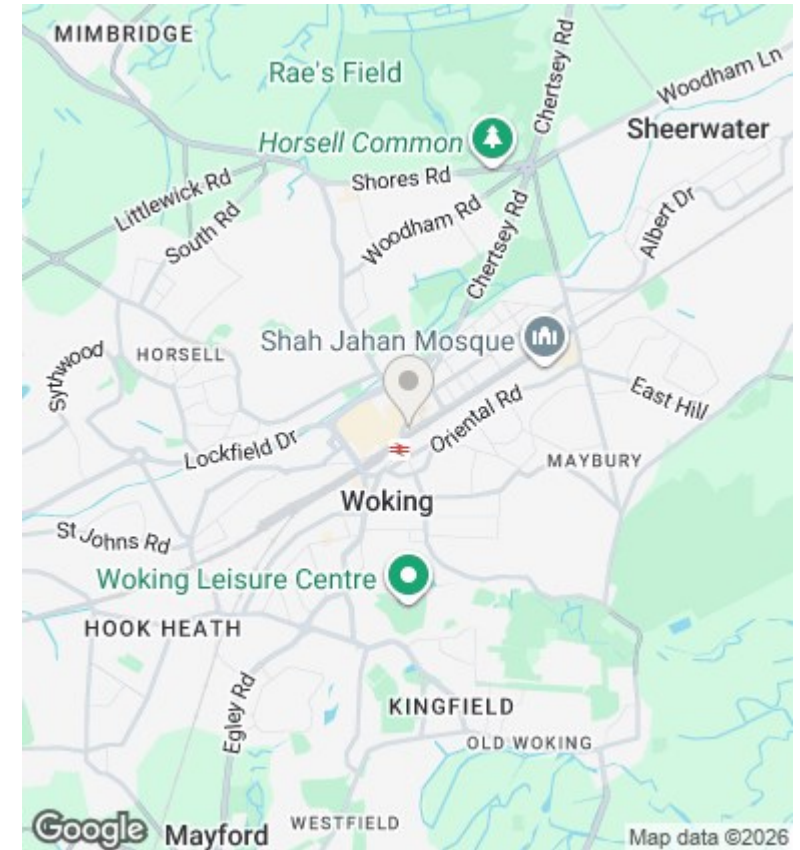
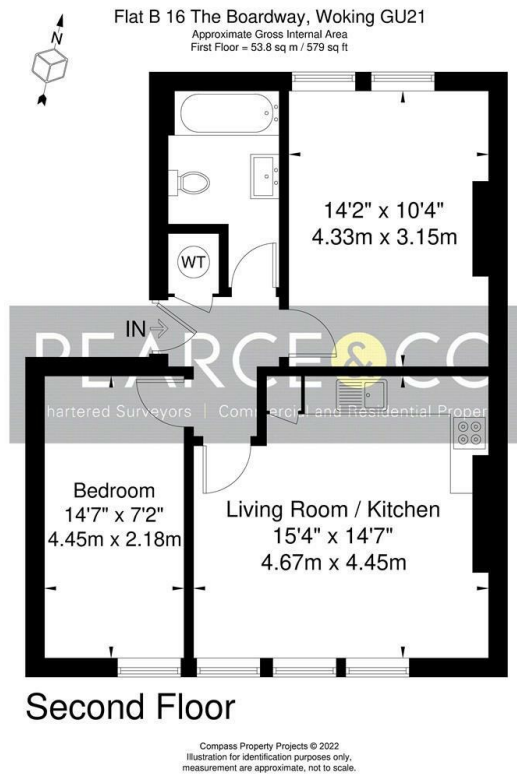




## Woking

**£1,450 PCM**

- Well presented throughout
- Appliances included
- Town Centre location
- Must be seen
- Two double bedrooms
- Modern fitted bathroom
- Unfurnished
- Modern fitted kitchen
- Spacious throughout
- Available JULY



A spacious town centre apartment with a modern interior throughout, providing a contemporary open plan living space, Kitchen with appliances, spacious lounge/dining room, two double bedrooms, modern bathroom. Situated moments from Woking mainline station and Town Centre. Available JULY - Unfurnished.

## Viewings

Viewings by arrangement only. Call 01932 582501 to make an appointment.

## Council Tax Band

C

## EPC Rating:

D

Energy Efficiency Rating		Current	Potential
<i>Very energy efficient - lower running costs</i>			
(92 plus)	A		
(81-91)	B		85
(69-80)	C		
(55-68)	D	68	
(39-54)	E		
(21-38)	F		
(1-20)	G		
<i>Not energy efficient - higher running costs</i>			
<b>England &amp; Wales</b>		EU Directive 2002/91/EC	