



BRASENOSE DRIVE, SW13

£550,000

One bedroom
Gated development
Lift access
Chain free
Allocated parking space
Harrods Village Development

@marshandparsons
marshandparsons.co.uk

MARSH &
PARSONS



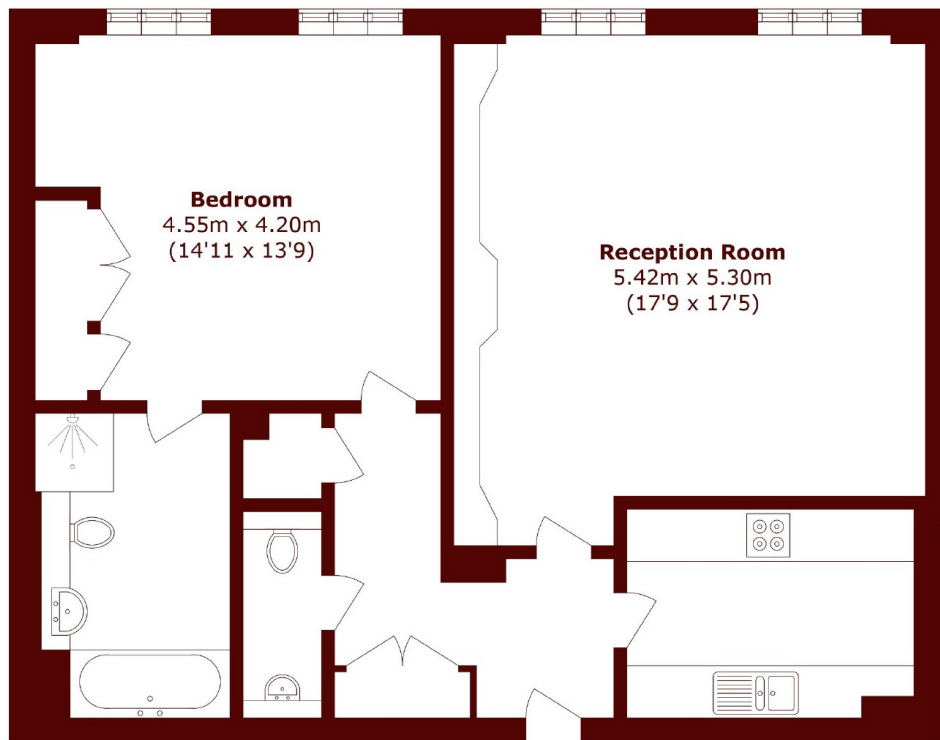
ABOUT THE PROPERTY

Marsh & Parsons are delighted to offer this one bedroom flat, with an allocated parking space, situated in the sought after Harrods Village Development.

The development offers quick access to the Thames Walk and Barnes Wetland Centre. It's near Hammersmith Broadway, with cinemas, theatres, gyms, shops, and restaurants like Sam's Riverside, River Café, and The Gate.



STEP INSIDE BRASENOSE DRIVE



Total area (approx.): 79.9 sq. m (860 sq. ft)

Barnes & East Sheen
020 8563 8333

Energy Rating: C We aim to make our particulars both accurate and reliable. However, they are not guaranteed; nor do they form part of an offer or contract. If you require clarification on any points then please contact us, especially if you're traveling some distance to view. Please note that appliances and heating systems have not been tested and therefore no warranties can be given as to their good working order

**MARSH &
PARSONS**