



## Saltram Crescent, W9

£625,000

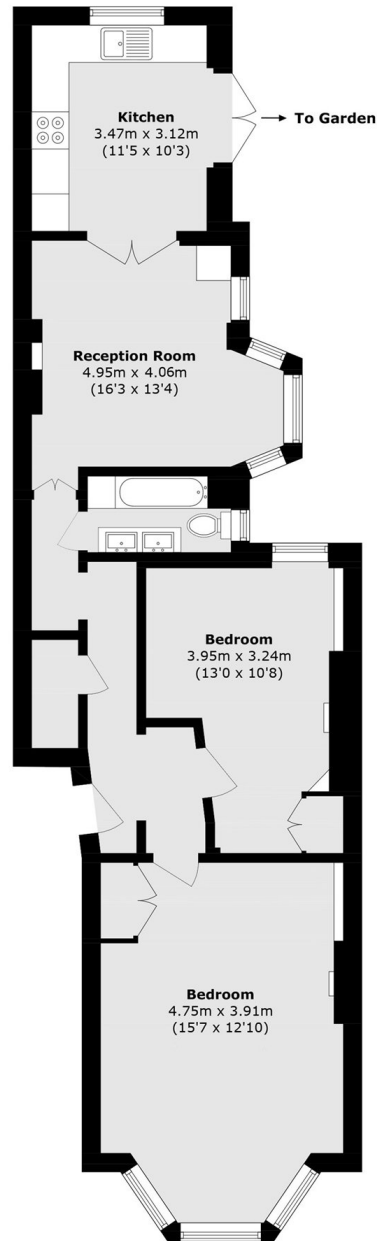
A spacious ground floor flat set in Victorian conversion. This property is ideal for family living, featuring two sizable bedrooms, separate kitchen leading out into a private garden, ample storage and wooden flooring throughout.

Saltram Crescent is one road away from Queens Park, providing easy access to multiple transport links as well as the wide range of amenities along Salusbury Road and the Farmer's market every Sunday.

### Features

- Share of Freehold
- Great Transport Links
- Separate Kitchen
- Bay Windows
- Ample Storage

# Saltram Crescent, Maida Vale, W9



Total area (approx.): 72.8 sq. m (783.6 sq. ft)