



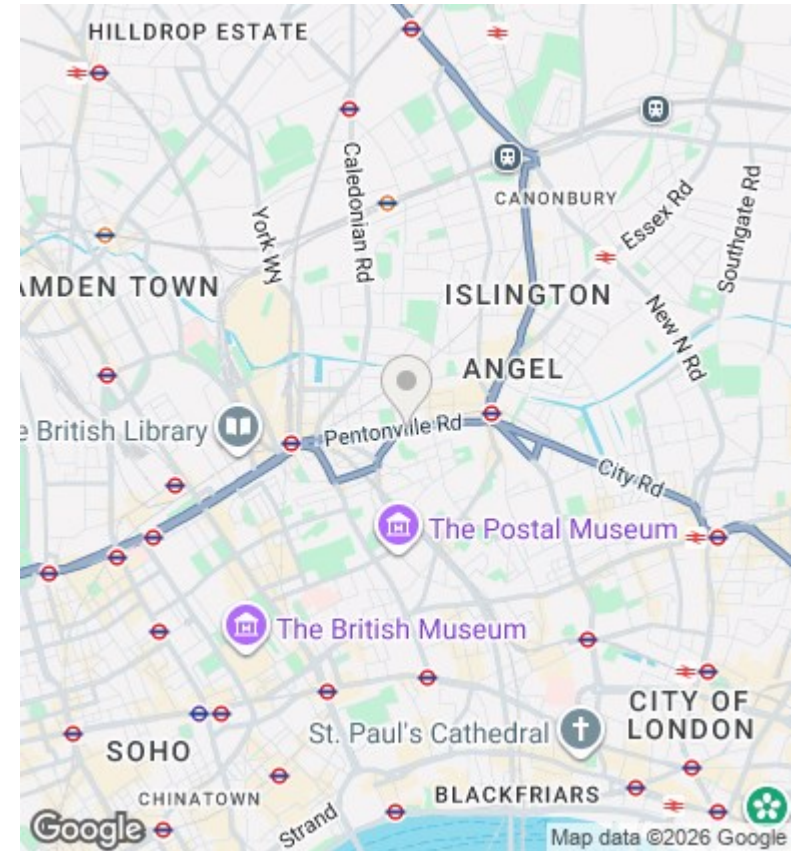
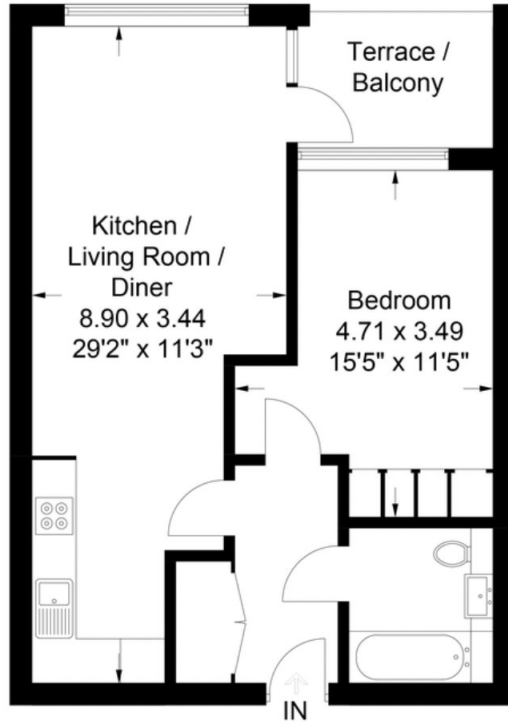
Eyre Court, 146 Pentonville Road, London, N1 9FT N1 9FT

£3,000 Per Month

- Fully furnished one-bedroom apartment
- Double bedroom with fitted wardrobes
- Residents' gym, swimming pool and cinema room
- Council Tax Band D (Islington)
- Spacious open-plan living area with fitted kitchen
- Contemporary bathroom and ample storage
- 24-hour concierge service
- Private balcony with space to relax
- Wood flooring throughout
- Excellent transport links – 0.4 miles to Angel, 0.5 miles to King's Cross

Pentonville Road, N1

Approximate Gross Internal Area = 51.1 sq m / 550 sq ft



Viewings

Viewings by arrangement only.
Call 02077225022 to make an appointment.

Council Tax Band

D

EPC Rating:

Energy Efficiency Rating		
	Current	Potential
<i>Very energy efficient - lower running costs</i>		
(92 plus) A		
(81-91) B		
(69-80) C		
(55-68) D		
(39-54) E		
(21-38) F		
(1-20) G		
<i>Not energy efficient - higher running costs</i>		
England & Wales	EU Directive 2002/91/EC	