



Old Mill Close, Whittington, KING'S LYNN, PE33 9TR

welcome to

Old Mill Close, Whittington, KING'S LYNN

Situated in a small development within the village of Whittington, lies this well-presented three bedroom mid-terraced house. Offering modern accommodation throughout, the property boasts a kitchen/diner with integrated appliances, lounge, WC & comfortable bedrooms, plus off-road parking!



Accommodation:

Double-glazed entrance door to:

Entrance Hall

Door to the front. Radiator. Stairs leading to the first floor landing.

Cloakroom

Fitted with WC & wash hand basin. Radiator.

Kitchen / Diner

This modern, fitted kitchen includes both wall & base units with work surfaces over, a one and a half bowl stainless steel sink & drainer unit, a low-level electric oven & an electric hob with stainless steel cooker hood over. There is also an integrated fridge/freezer & integrated dishwasher. Radiator. Double-glazed window to the front.

Lounge

Double-glazed window to the rear. Two radiators. Double-glazed sliding patio doors to the rear leading to the rear garden.

First Floor Landing

Stairs from the entrance hall. Loft access.

Bedroom One

Double-glazed window to the front. Radiator.

Bedroom Two

Double-glazed window to the rear. Radiator.

Bedroom Three

Double-glazed window to the rear. Radiator.

Bathroom

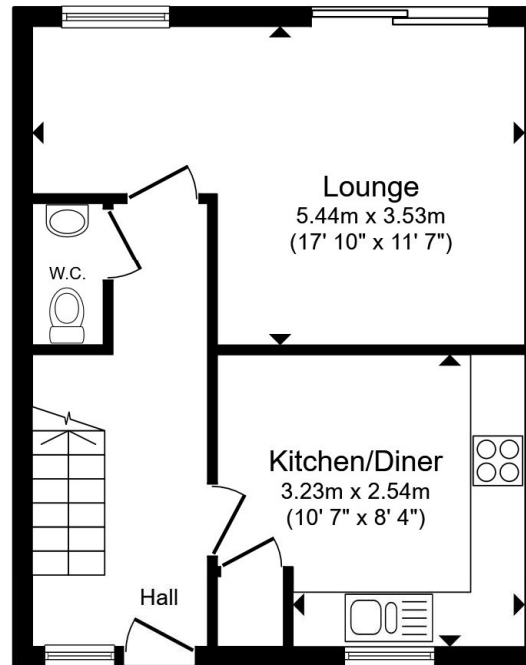
Fitted with WC, wash hand basin & bath with shower over. Radiator. Double-glazed window to the front.

Outside

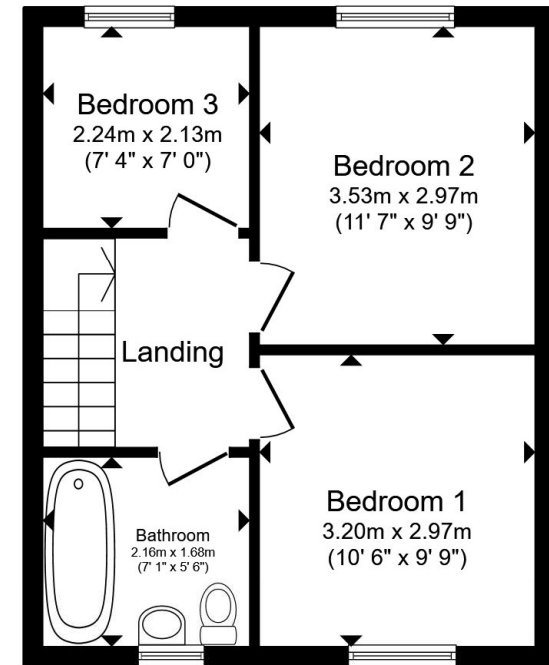
To the front of the property, you will find one allocated parking space, with a further allocated space within the development. To the rear, the low-maintenance garden is fully enclosed & is mainly astro-turfed, alongside a patio area.

Agent's Note

Heating to the property is served by Air Source Heating & waste from the property is served by a septic tank which is shared by the development. Please contact the branch for further information if required.



Ground Floor



First Floor

Total floor area 74.5 m² (802 sq.ft.) approx

This floor plan is for illustrative purposes only. It is not drawn to scale. Any measurements, floor areas (including any total floor area), openings and orientation are approximate. No details are guaranteed, they cannot be relied upon for any purpose and they do not form part of any agreement. No liability is taken for any error, omission or misstatement. A party must rely upon its own inspection(s). Powered by www.propertybox.io



view this property online williamhbrown.co.uk/Property/DHM111963



welcome to

Old Mill Close, Whittington, KING'S LYNN

- 3 bed mid-terraced house
- Modern kitchen/diner
- Ground floor WC
- Low-maintenance garden
- 2 parking spaces

Tenure: Freehold EPC Rating: B
Council Tax Band: B

£210,000



Please note the marker reflects the
postcode not the actual property

view this property online [williamhbrown.co.uk/Property/DHM111963](https://www.williamhbrown.co.uk/Property/DHM111963)



Property Ref:
DHM111963 - 0003

1. MONEY LAUNDERING REGULATIONS Intending purchasers will be asked to produce identification documentation at a later stage and we would ask for your co-operation in order that there is no delay in agreeing the sale. 2. These particulars do not constitute part or all of an offer or contract. 3. The measurements indicated are supplied for guidance only and as such must be considered incorrect. Potential buyers are advised to recheck measurements before committing to any expense. 4. We have not tested any apparatus, equipment, fixtures or services and it is in the buyers interest to check the working condition of any appliances. 5. Where an EPC, or a Home Report (Scotland only) is held for this property, it is available for inspection at the branch by appointment. If you require a printed version of a Home Report, you will need to pay a reasonable production charge reflecting printing and other costs. 6. We are not able to offer an opinion either written or verbal on the content of these reports and this must be obtained from your legal representative. 7. Whilst we take care in preparing these reports, a buyer should ensure that his/her legal representative confirms as soon as possible all matters relating to title including the extent and boundaries of the property and other important matters before exchange of contracts.

William H Brown is a trading name of Sequence (UK) Limited which is registered in England and Wales under company number 4268443. Registered Office is Cumbria House, 16-20 Hockliffe Street, Leighton Buzzard, Bedfordshire, LU7 1GN. VAT Registration Number is 500 2481 05.



william h brown



01366 387638



DownhamMarket@williamhbrown.co.uk



2 Market Place, DOWNHAM MARKET, Norfolk,
PE38 9DE



williamhbrown.co.uk