

Ennismore Gardens, SW7

£923 Per week

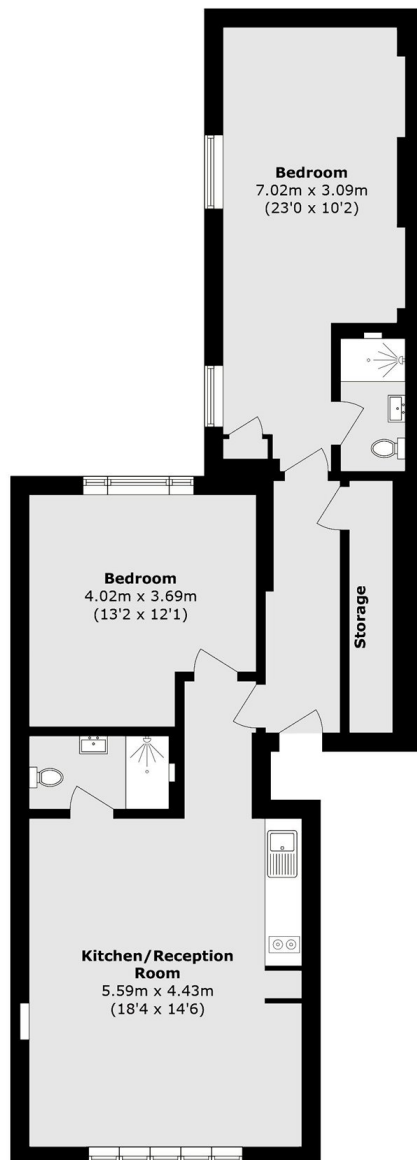
A newly renovated two bedrooms, two bathrooms apartment located on the ground floor of a converted building. The apartment offers double height ceilings, wooden flooring throughout, and generous storage.

The property is located to the north of Brompton Road and just south of Hyde Park, and is within easy walking distance of the amenities offered in the Knightsbridge area.

Features

- Two Bedrooms
- Two Bathrooms
- Double height ceilings
- Wood Floor Throughout
- Modern Appliances

Ennismore Gardens, London, SW7



Ground Floor

Total area (approx.): 76.0 sq. m (818.0 sq. ft)