



Hamilton Close, SE16

£545,000

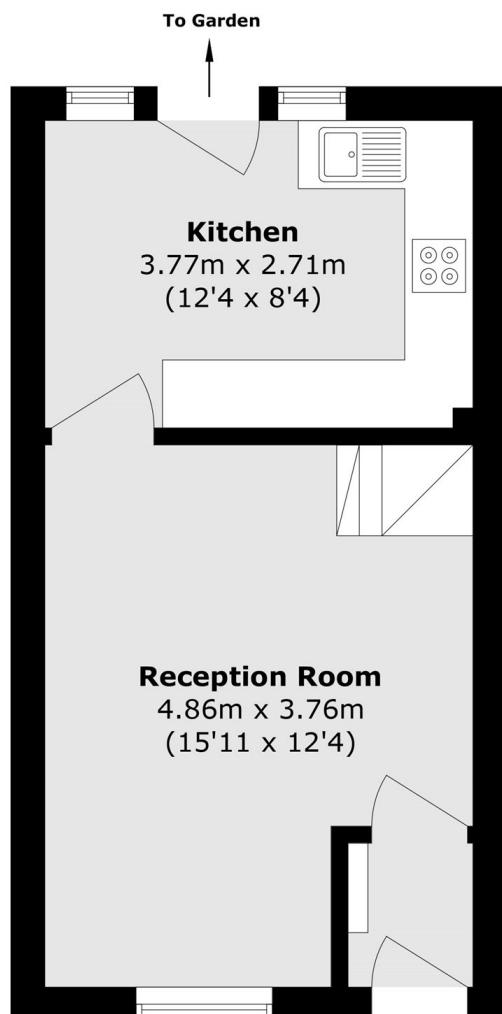
Being sold chain free, this two double bedroom freehold house is immaculately presented throughout and boasts a separate living space, large kitchen, private garden, off street parking and a garage.

Hamilton Close is a lovely quiet street located only 0.7 miles from Canada Water station and 0.8 miles from Surrey Quays station offering excellent transport links to all of London.

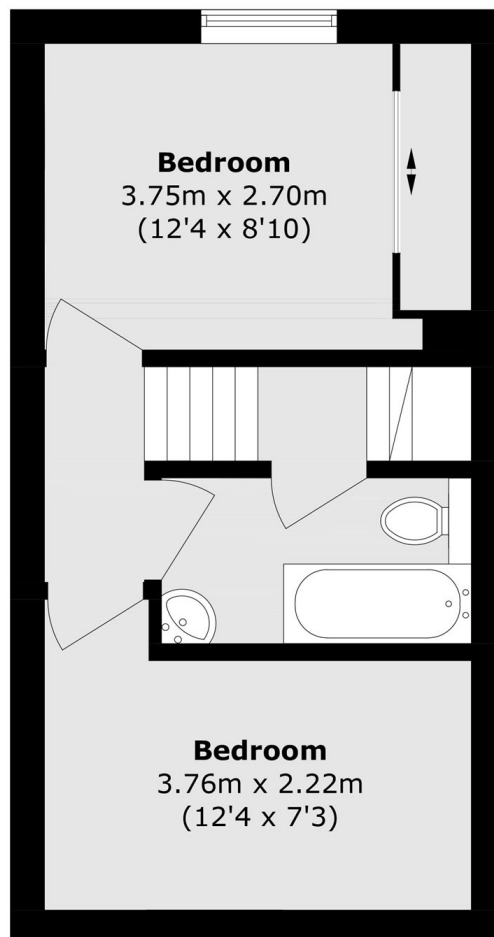
Features

- Two Double Bedrooms
- Freehold House
- Garage & Off Street Parking
- Private Garden
- Chain Free
- Excellent Location

Hamilton Close, London, SE16



Ground Floor



First Floor

Total area (approx.): 57.5 sq. m (618.9 sq. ft)