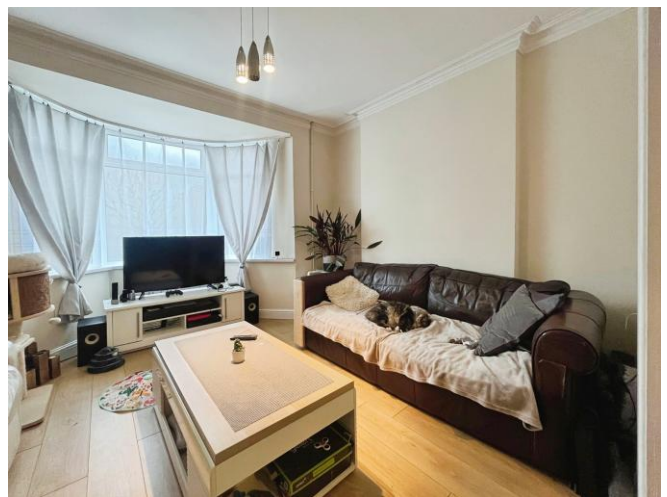




## Bournville Road, offers over £120,000

- Three Bedroom, Mid-Terrace
- Two Reception Rooms
- Great Location
- No Chain
- EPC Rating: D



 3  1  2



## About the property

Situated in a popular residential area, this charming three-bedroom mid-terrace property offers spacious living and classic character throughout. The home features two generous reception rooms, ideal for family living or entertaining, and a striking bay-fronted window that fills the space with natural light.

The property boasts a well-proportioned kitchen, family bathroom, and three good-sized bedrooms. To the rear, you'll find an enclosed garden offering a peaceful outdoor space perfect for relaxing or hosting. There is also the extra benefit of land opposite the garden providing potential for extra garden space or parking.

Located close to local schools, shops, and transport links, this lovely home is perfectly suited to first-time buyers, growing families, or investors looking for a strong rental opportunity.



## Accommodation

### Living Room

12' 5" x 10' 4" ( 3.78m x 3.15m )

### Reception Room

12' 5" x 10' 8" ( 3.78m x 3.25m )

### Kitchen

9' 5" x 9' 4" ( 2.87m x 2.84m )

### Bathroom

9' 6" x 7' 9" ( 2.90m x 2.36m )

### Bedroom One

9' 9" x 9' 3" ( 2.97m x 2.82m )

### Bedroom Two

10' 8" x 10' 2" ( 3.25m x 3.10m )

### Bedroom Three

16' 4" x 10' 6" ( 4.98m x 3.20m )

01495360922

ebbwwale@peteralan.co.uk

## Floorplan

### Important Information

Note while we endeavour to make our sales details accurate and reliable, if there is any point which is of particular interest to you, please contact the office and we will be pleased to confirm the position for you. We have not personally tested any apparatus, equipment, fixtures, fittings or services and cannot verify they are in working order or fit for their purposes. Nothing in these particulars is intended to indicate that carpets or curtains, furnishings or fittings, electrical goods (whether wired or not), Gas fires or light fittings or any other fixtures not expressly included form part of the property offered for sale. This computer generated Floorplan, if applicable, is intended as a general guide to the layout and design of the property. It is not to scale and should not be relied upon for dimensions. Tenure: We cannot confirm the tenure of the property as we have not had access to the legal documents. The buyer is advised to obtain verification from their solicitor or surveyor.

Peter Alan Limited is registered in England and Wales under company number 2073153, Registered Office is Cumbria House, 16-20 Hockliffe Street, Leighton Buzzard, Bedfordshire, LU7 1GN. VAT Registration Number is 500 2481 05. For activities relating to regulated mortgages and non-investment insurance contracts, Peter Alan Limited is an appointed representative of Connells Limited which is authorised and regulated by the Financial Conduct Authority. Connells Limited's Financial Services Register number is 302221. Most buy-to-let

