



## Mountfield Road, W5

### £699,999

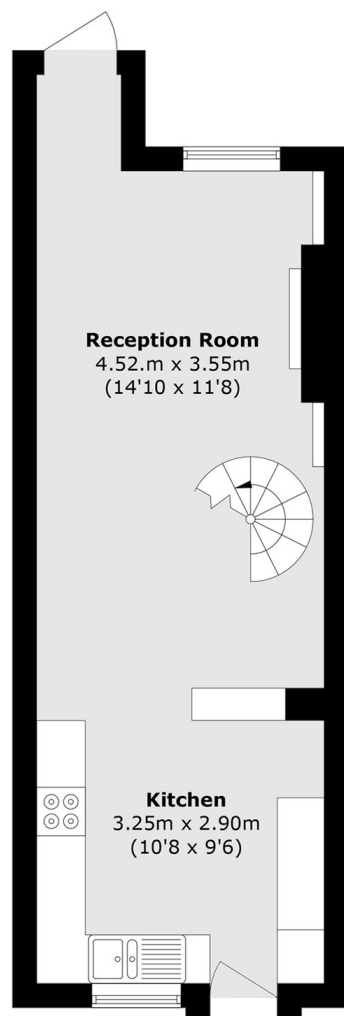
A charming and characterful two bedroom cottage with off street parking to the front and private rear patio. Offered to the market with no onward chain, the property has been recently refreshed with a new kitchen installed. Ready to move in.

This property is 0.2 miles from Ealing Broadway Station (Elizabeth Line, District Line, Central Line and Mainline Rail). Other transport links include many local bus routes along with easy access to the A40, A406, A4 and M4. Ealing Broadway consists of many boutique shops, bars, restaurants, salons and gyms.

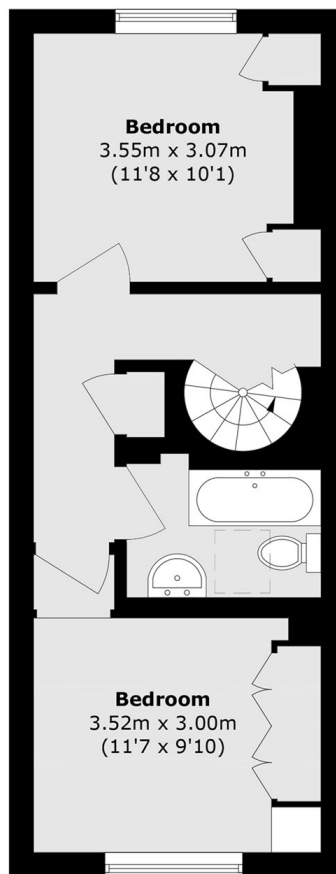
### Features

- Two Bedrooms
- Open Plan Ground Floor
- Off Street Parking
- Close To Station
- No Onward Chain
- Private Patio Garden

# Mountfield Road, London, W5



**Ground Floor**



**First Floor**

Total area (approx.): 72.9 sq. m (784.6 sq. ft)