

# KEYSTONE

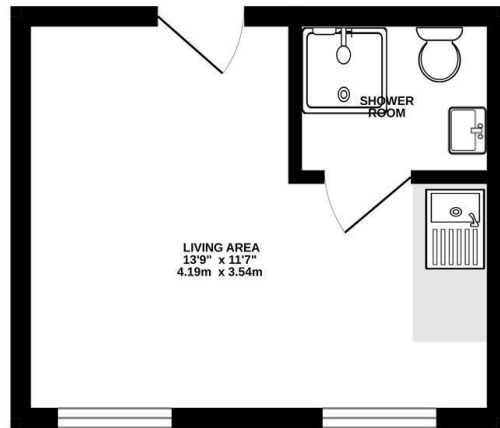


St. Matthews Street, Ipswich, IP1 3EW

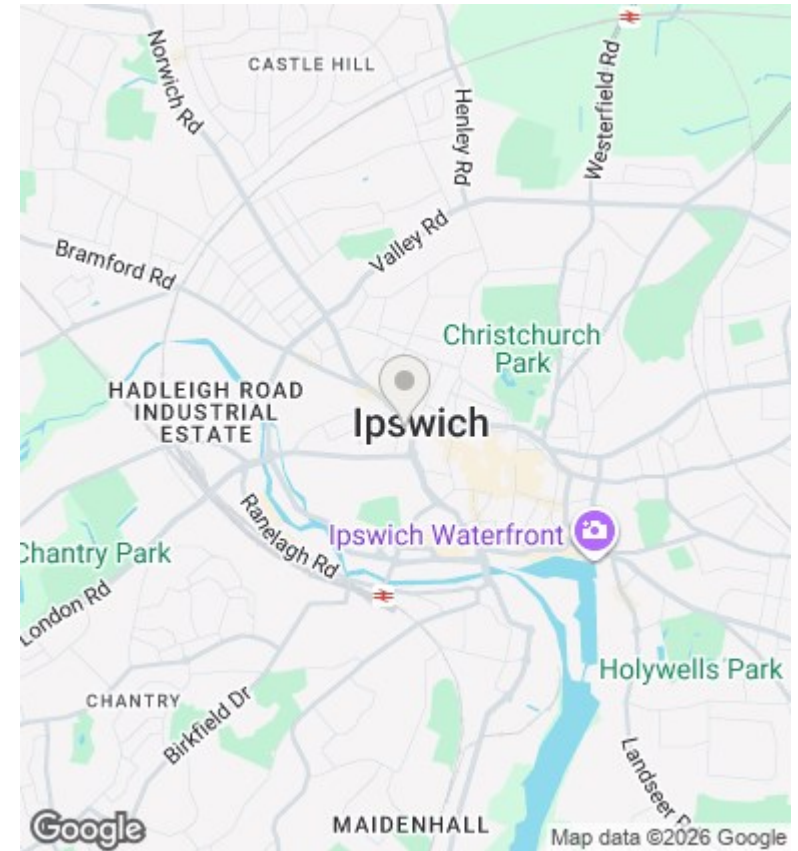
£525 PCM

- Studio Apartment - West Ipswich Town Centre
- Suitable for SINGLE OCCUPIER ONLY - too small for a couple
- You will still need to pay Electric & Council Tax
- BRAND NEW REFURBISHMENT - NEW FLOORING, NEW BATHROOM, NEW SHOWER ROOM
- Gas central heating & Double Glazed
- EPC rating D
- Please note there is NO PARKING AT ALL WITH THIS PROPERTY >>>
- GAS & WATER BILLS INCLUDED
- AVAILABLE NOW

GROUND FLOOR



While every effort has been made to ensure the accuracy of the floorplan contained here, measurements of doors, windows, rooms and any other items are approximate and no responsibility is taken for any error, omission or misstatement. This plan is for illustrative purposes only and should be used to assist the prospective purchaser. The services, systems and appliances shown have not been tested and no guarantee as to their operability or efficiency can be given.  
Made with Metrxp ©2020



Directions

Viewings

Viewings by arrangement only. Call 01473 221 399 to make an appointment.

EPC Rating:  
D

Energy Efficiency Rating		Current	Potential
<i>Very energy efficient - lower running costs</i>			
(92 plus) <b>A</b>			
(81-91) <b>B</b>			
(69-80) <b>C</b>			
(55-68) <b>D</b>		59	65
(39-54) <b>E</b>			
(21-38) <b>F</b>			
(1-20) <b>G</b>			
<i>Not energy efficient - higher running costs</i>			
<b>England &amp; Wales</b>		EU Directive 2002/91/EC	