



Coxtie Green Road, Brentwood, CM14 5PT
Price guide £560,000

Jenkins Property

Pilgrims Hatch, Brentwood, this delightful end-terrace house on Coxtie Green Road offers a perfect blend of comfort and modern living. With three well-proportioned bedrooms, this property is ideal for families or those seeking extra space. Each bedroom is designed to provide a peaceful retreat, ensuring restful nights and rejuvenating mornings.

The house boasts a spacious reception room, perfect for entertaining guests or enjoying quiet evenings with family. The layout is both practical and inviting, allowing for a seamless flow between the living areas. Additionally, the property features three bathrooms, which is a significant advantage for busy households, providing convenience and privacy for all residents.

Situated in a desirable location, this home benefits from the tranquillity of suburban life while being within easy reach of Brentwood's vibrant amenities. Local shops, schools, and parks are just a short distance away, making it an excellent choice for families and professionals alike.

This end-terrace house is not just a property; it is a place where memories can be made. With its appealing features and prime location, it presents a wonderful opportunity for those looking to settle in a welcoming community. Do not miss the chance to make this lovely house your new home.

- End terrace modern home
- Well presented
- Loft had been constructed to accommodate an additional room
- Master bedroom with ensuite
- Lounge dining room
- Semi-rural location
- Off road covered parking
- Loft space adaptable for a large bedroom (stpc)



Hallway 15'5" x 6'1" (4.71 x 1.86)

Bedroom 9'11" x 9'1" (3.04 x 2.79)

Kitchen 10'7" x 9'5" (3.23 x 2.89)

Bathroom 7'1" x 4'9" (2.17 x 1.46)

Living Room 12'11" x 16'0" (3.96 x 4.90)

Loft space 29'7" x 13'4" (9.03 x 4.07)

WC 4'6" x > 9'3" (1.39 x > 2.84)

The loft had been build to accommodate an additional room subject to regular planning consent

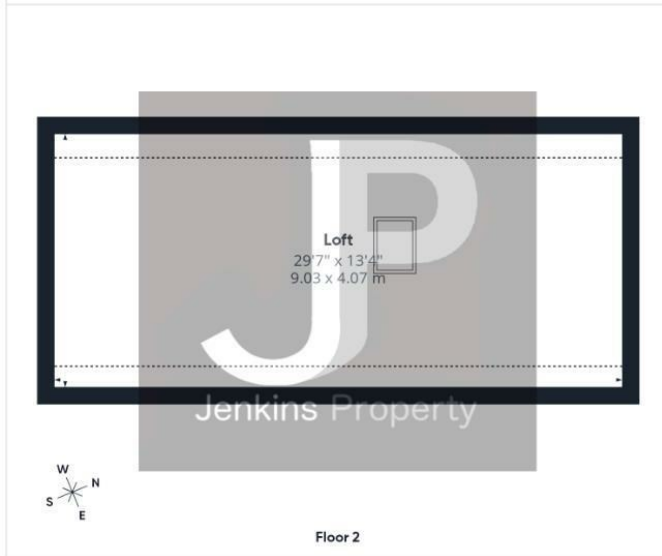
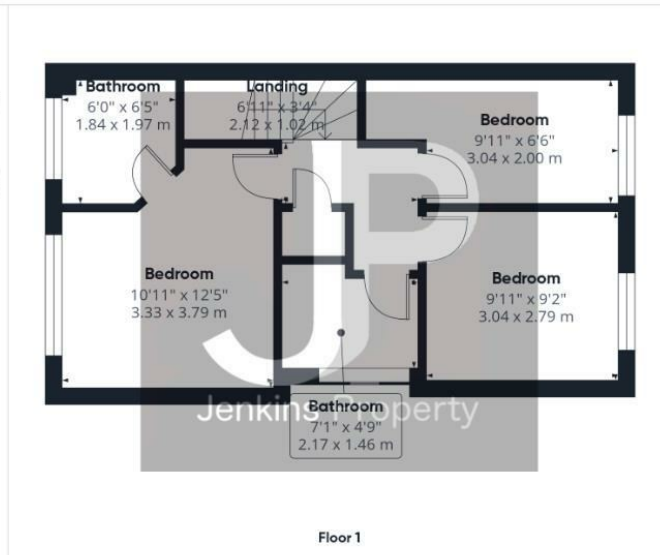
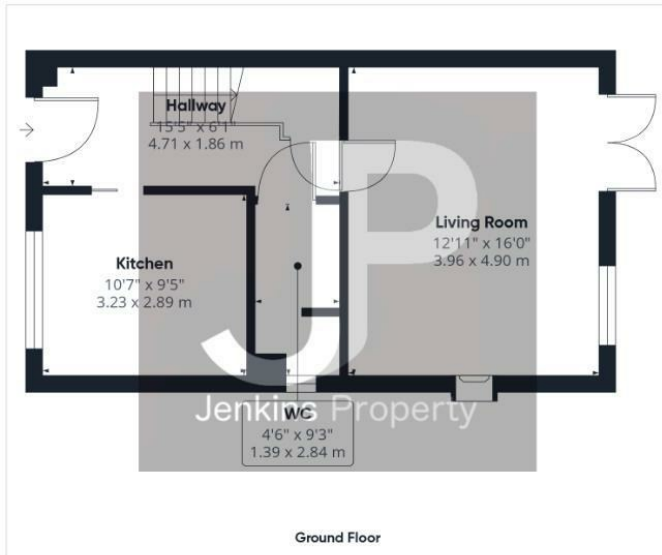
Landing 6'11" x 3'4" (2.12 x 1.02)

Bedroom 10'11" x 12'5" (3.33 x 3.79)

Bathroom 6'0" x 6'5" (1.84 x 1.97)

Bedroom 9'11" x 6'6" (3.04 x 2.00)






Approximate total area^m

1241 ft²
115.3 m²

Reduced headroom

64 ft²
5.9 m²

(1) Excluding balconies and terraces

Reduced headroom
----- Below 5 ft/1.5 m

Calculations reference the RICS IPMS 3C standard. Measurements are approximate and not to scale. This floor plan is intended for illustration only.

GIRAFFE 360

