



90 Kingsley Road, Harrogate

£330,000

VERITY
FREARSON

YOUR AWARD
WINNING AGENT

#DARINGTOBEDIFFERENT



A well-presented three-bedroom semi-detached house, occupying a delightful position on the edge of beautiful open countryside whilst remaining conveniently located for both Harrogate and Knaresborough. The property offers spacious accommodation throughout, together with driveway parking, a garage and a particularly generous rear garden. A particular feature of the property is the impressive open plan living and dining space with wood-burning stove and glazed doors opening onto the garden, creating a wonderful environment for modern family living and entertaining.

The property is situated in a desirable location between Harrogate and Knaresborough and is well served by excellent local amenities, including shops, schools and Starbeck railway station, which provides convenient access to the surrounding area.



GROUND FLOOR

A porch leads into the spacious reception hall which provides access to the principal accommodation. The sitting and dining room is a particularly generous reception space with ample room for both seating and dining areas. A wood-burning stove creates an attractive focal point, and glazed doors lead directly onto the rear garden. The modern kitchen is fitted with a stylish range of wall and base units and incorporates an electric hob, double oven, integrated fridge, freezer and dishwasher. There is also a useful utility cupboard with plumbing for a washing machine.



FIRST FLOOR

On the first floor there are three bedrooms, with the two larger bedrooms benefiting from fitted wardrobes. The accommodation is served by a modern shower room fitted with WC, washbasin and shower enclosure.

OUTSIDE

A driveway provides off-road parking and leads to a single garage. A particular feature of the property is the very good sized rear garden, which comprises lawned areas, seating terraces and a timber garden shed, providing an excellent outdoor entertaining space.



Kingsley Road, Harrogate, HG1

Approximate Gross Internal Area = 95.4 sq m / 1027 sq ft
Garage = 18.6 sq m / 200 sq ft
Total = 114.0 sq m / 1227 sq ft

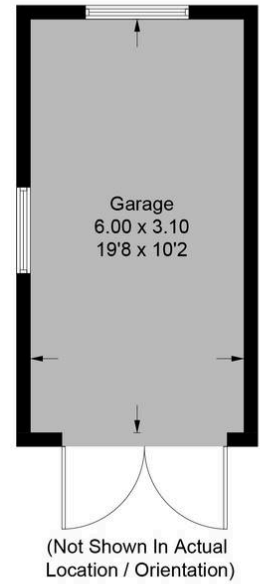
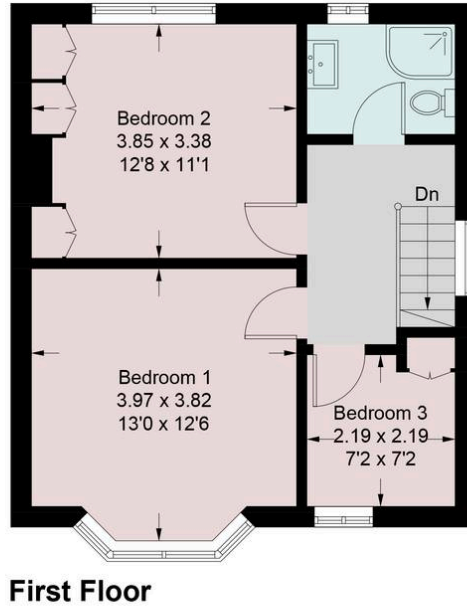
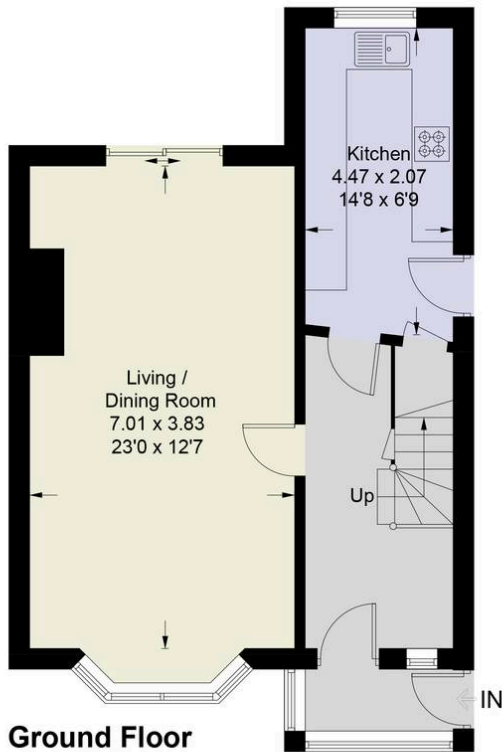


Illustration for identification purposes only, measurements are approximate, not to scale. Pursuant to RICS property measurement 2nd edition © Intelligent Property Marketing 2026

