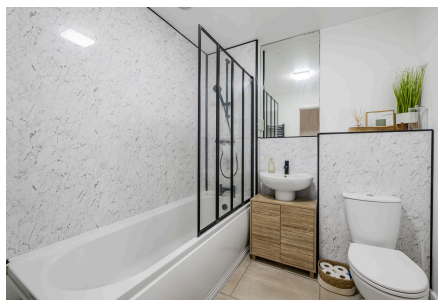


## Upper Elmers End Road, Beckenham, BR3

Guide Price £300,000 - £315,000

2 1 1



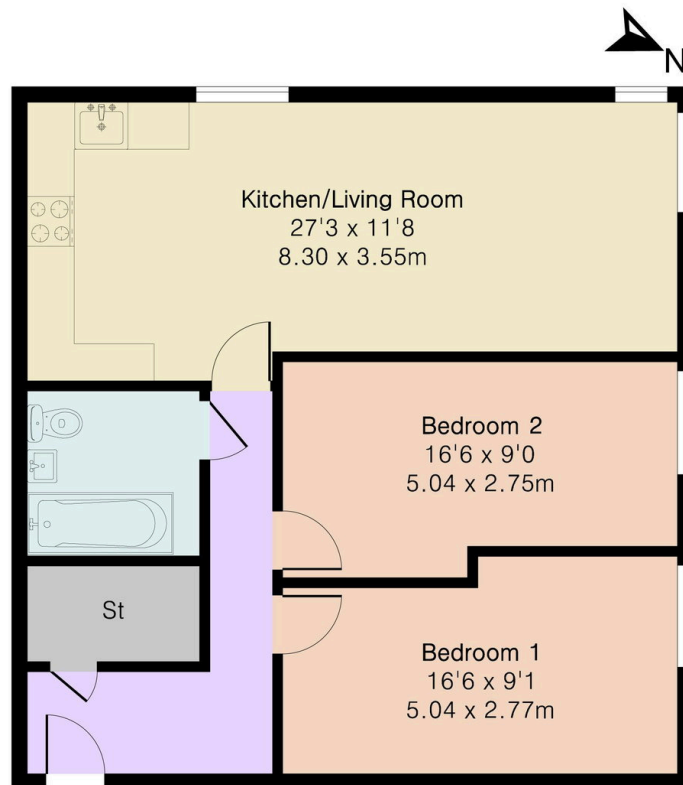
Please Quote Ref TH0310 For All Enquiries - GUIDE PRICE £300,000 to £315,000 - Beautifully presented two double bedroom second floor flat (765 Sq.Ft) with off street parking, conveniently situated in a popular residential location close to Eden Park and Elmers End stations, and an array of local amenities. Well maintained and appointed by the current owner, the property offers bright and spacious accommodation with stylish interiors and neutral decor - ideal for homeowner or investor alike. Features include an inviting open plan reception/well equipped kitchen, family bathroom, gas central heating, double glazing, inbuilt storage and quality floor coverings.



## Key Features

- Please Quote Ref TH0310 For All Enquiries
- Well Presented Two Double Bedroom Second Floor Flat (765 Sq.Ft)
- Popular Elmers End/Beckenham Location
- Modern Interiors and Quality Finish
- Bright and Spacious Open Plan Reception/ Kitchen
- Modern Bathroom
- Inbuilt Storage
- Off Street Parking
- Close to Excellent Transport Links
- Easy Access Shops, Schools and Amenities

Approximate Gross Internal Area 765 sq ft - 71 sq m



Second Floor

