

### Directions

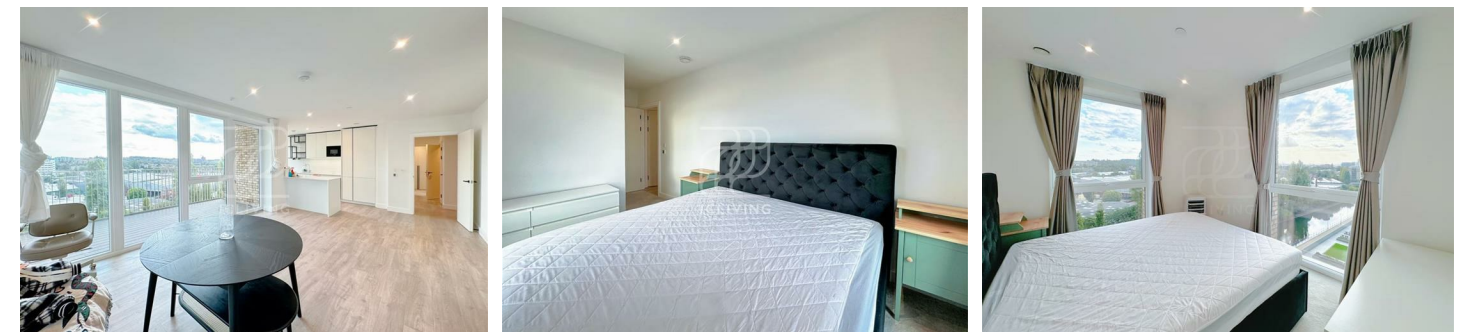
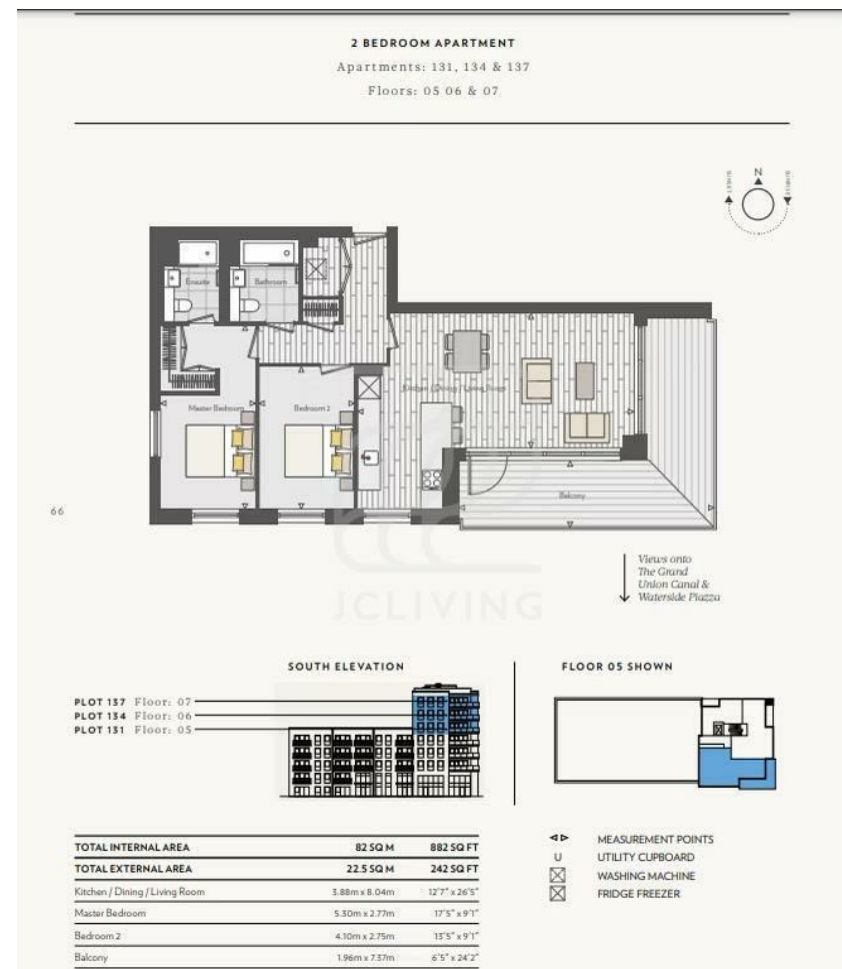
### Viewings

Viewings by arrangement only. Call 02033696888 to make an appointment.

### EPC Rating

B

Energy Efficiency Rating		Current	Potential
Very energy efficient - lower running costs			
(92 plus) A			
(81-91) B		82	
(69-80) C			
(55-68) D			
(39-54) E			
(21-38) F			
(1-20) G			
Not energy efficient - higher running costs			
England & Wales		EU Directive 2002/91/EC	



NZ116 Flat 44, Unison House 90 Beresford Avenue, Wembley, HA0 1PR

£650 Per Week

# Unison House 90 Beresford Avenue, Wembley HA0

1 DD

\*\*\* Please quote reference JC25071828 when contacting the office \*\*\*

Welcome to Unison House, a stunning new build flat located in the vibrant heart of London. This contemporary property, completed in 2022, offers a modern living experience with a generous space of 882 square feet.

As you enter, you are greeted by a spacious reception room that provides an inviting atmosphere, perfect for both relaxation and entertaining guests. The flat features two well-appointed bedrooms, ensuring ample space for family or guests. Each bedroom is complemented by its own bathroom, providing convenience and privacy for all occupants.

The design of this flat reflects a commitment to quality and modern aesthetics, making it an ideal choice for those seeking a stylish urban lifestyle. With its prime location, residents will enjoy easy access to a plethora of local amenities, including shops, restaurants, and excellent transport links, making commuting a breeze.

Unison House is not just a place to live; it is a community that embodies the essence of modern city living. Whether you are a first-time buyer or looking to invest in a property that combines comfort and convenience, this flat is sure to impress. Do not miss the opportunity to make this exceptional property your new home.



Council Tax Band: D

