



## Seymour Street, W1H

£3,554 Per calendar month

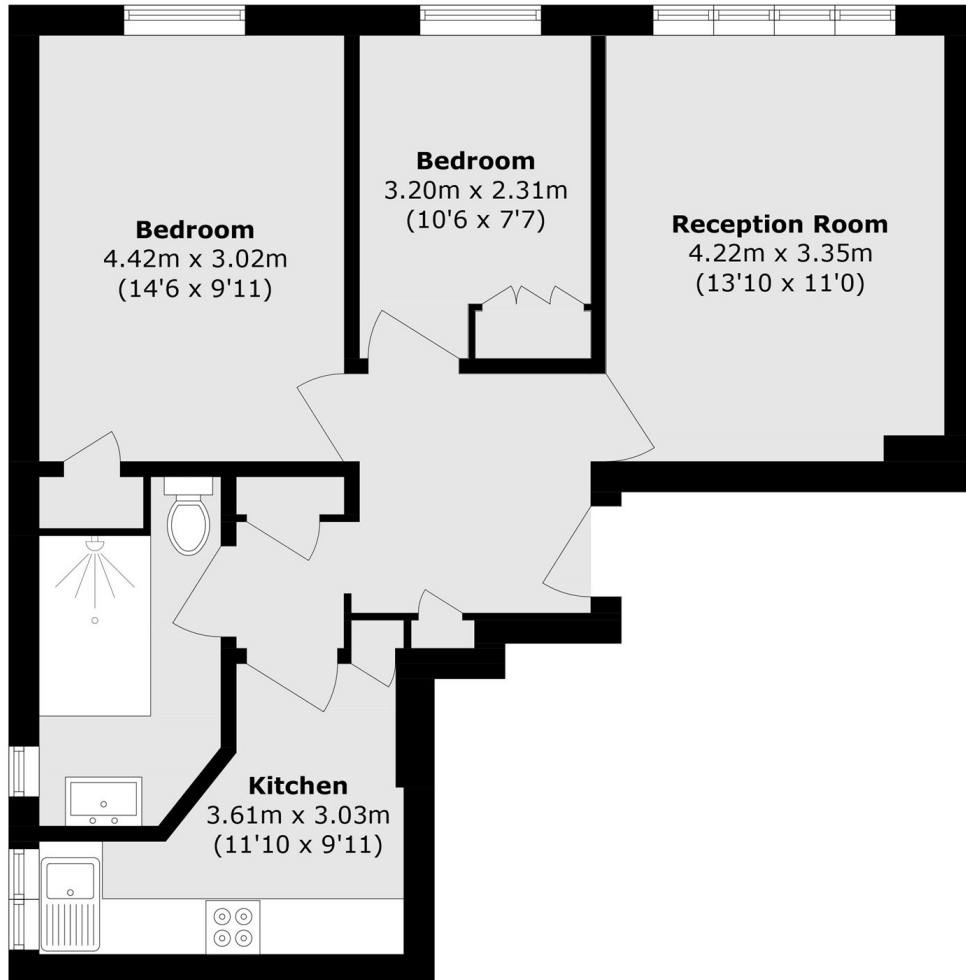
This two bedroom apartment is situated in a portered block on Seymour Street. The flat has a reception room, separate kitchen, two double bedrooms and a bathroom.

Seymour Street sits on the edge of Portman Village which is a favourite for locals, providing a village vibe in the heart of central London. The vibrant shops, bars and restaurants of Marylebone High Street are also within easy reach.

### Features

- Portered Building
- Two Double Bedroom
- One Bathroom
- Reception Room
- Separate Kitchen

# Seymour Street, London, W1H



## Fourth Floor

Total area (approx.): 58.4 sq. m (628.6 sq. ft)