



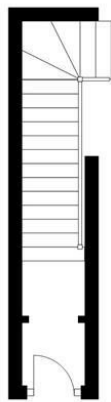
110 Whitefield Terrace, Newcastle Upon Tyne, NE6 5SS

£1,200 Per Month

Available April 2026 | £1,200pcm | Hive Estates presents to the market a refurbished property to rent in the sought after location of Heaton. The upper floor flat is situated on Whitefield Terrace, within walking distance to Iris Brickfield and on the doorstep of all the local cafes, shops and restaurants that Heaton has to offer. The property has undergone an extensive refurbishment and has been beautifully designed to offer you a superb space to live in. There are two double bedrooms, both designed with a warm and neutral tones. The master bedroom has a gorgeous bay window and both rooms are furnished. The lounge and kitchen have been opened up to create a feeling of extended space, the kitchen comes with newly fitted appliances and a stylish look with terrazzo tiled splash-back, the lounge area is a comfortable and also includes space for dining. An added bonus is the separate utility area. To the rear of the property the contemporary bathroom which fuses the terrazzo tile design across the property, there is a separate shower, wash hand basin, wc and black fitted heated towel rail. Externally there is a yard and free on street parking.

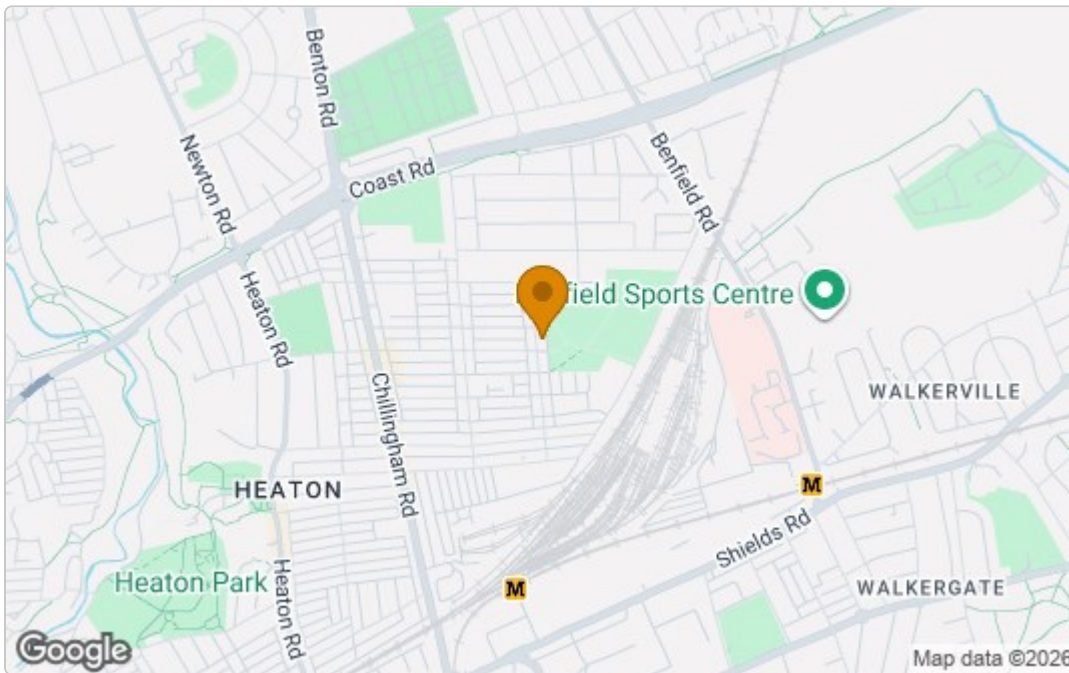
Floor Plan

Ground Floor
Approx. 5.0 sq. metres (54.1 sq. feet)

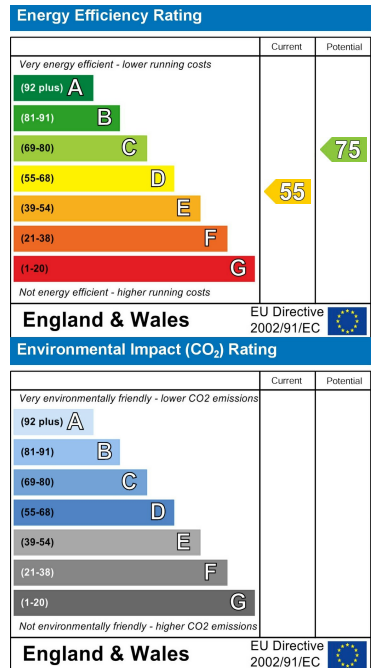


Total area: approx. 70.1 sq. metres (755.0 sq. feet)

Area Map



Energy Efficiency Graph



These particulars, whilst believed to be accurate are set out as a general outline only for guidance and do not constitute any part of an offer or contract. Intending purchasers should not rely on them as statements of representation of fact, but must satisfy themselves by inspection or otherwise as to their accuracy. No person in this firm's employment has the authority to make or give any representation or warranty in respect of the property.