



Flat 69, The Quadrangle House, 84 Romford Road - E15 4EJ

£300,000 Leasehold

Well-proportioned layout with all rooms accessed from a central hallway • Ideal purchase for first-time buyers, downsizers and buy-to-let investors • Excellent transport links via nearby Stratford and Maryland stations • Within easy reach of Westfield Stratford City and Queen Elizabeth Olympic Park • Convenient access to local shops, cafés and everyday amenities • Popular East London location benefiting from ongoing regeneration and strong rental demand • Offered with no onward chain (subject to confirmation)



**HIGHCASTLE
ESTATES**

020 3026 4420
sales@hceuk.com

Well-proportioned two-bedroom apartment in The Quadrangle House, Stratford. Neutral décor, separate kitchen, near transport, shops and parks. Ideal for first-time buyers or investors.

Council Tax band: B

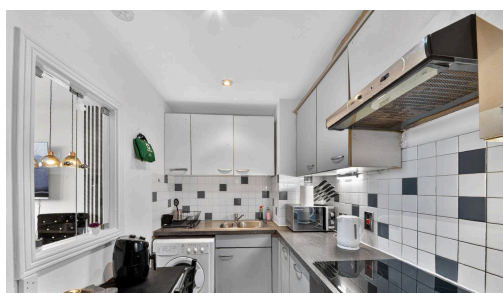
Tenure: Leasehold

EPC Energy Efficiency Rating: C

EPC Environmental Impact Rating: D



- Well-proportioned layout with all rooms accessed from a central hallway
- Ideal purchase for first-time buyers, downsizers and buy-to-let investors
- Excellent transport links via nearby Stratford and Maryland stations
- Within easy reach of Westfield Stratford City and Queen Elizabeth Olympic Park
- Convenient access to local shops, cafés and everyday amenities
- Popular East London location benefiting from ongoing



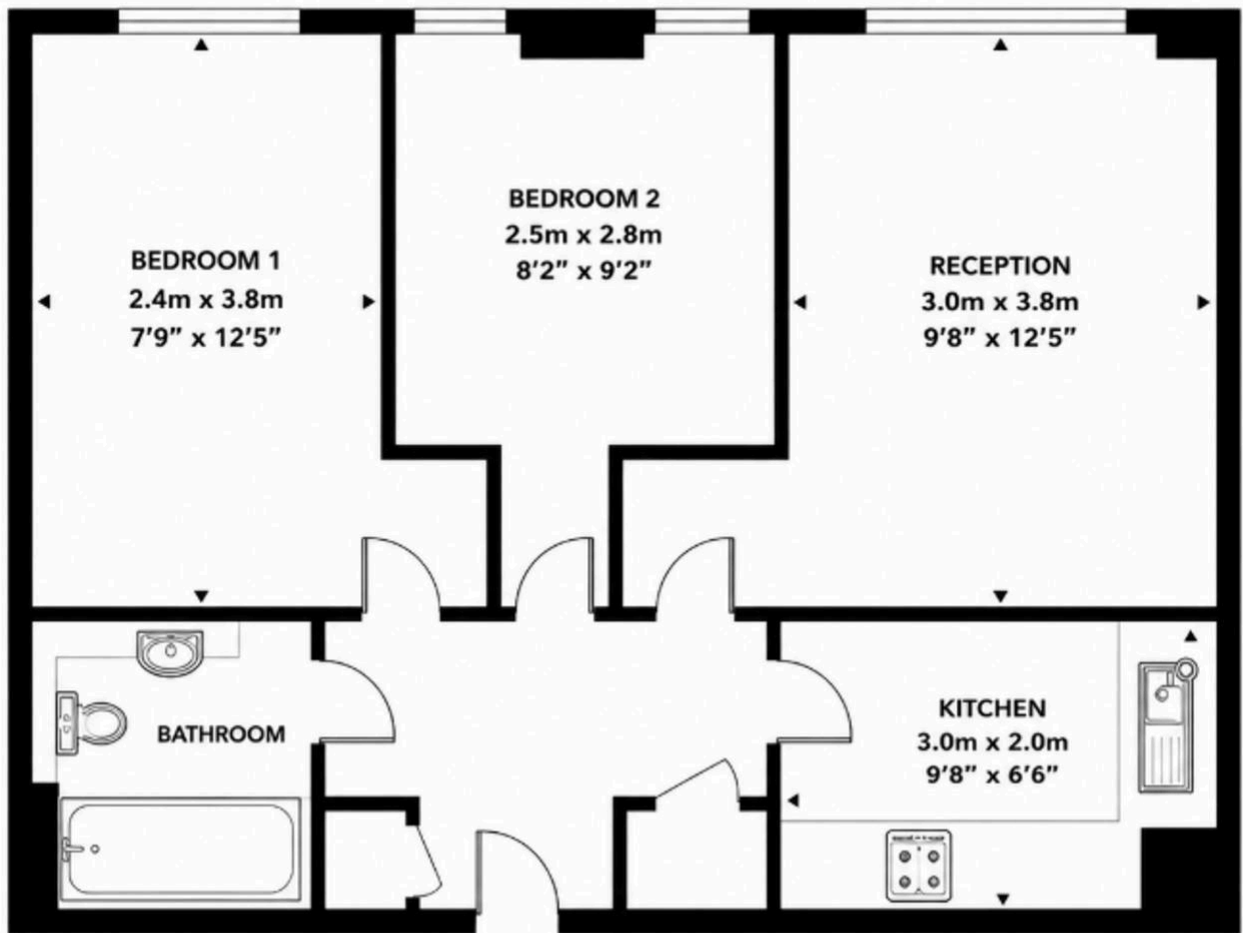




HIGHCASTLE
ESTATES

**Flat 69, The Quadrangle House,
84 Romford Road, London, E15 4EJ**

Approx. Gross Internal Area
51 sq m / 549 sq ft



This floorplan is for illustrative purposes only.
Measurements are approximate and not to scale.
Made with Metropix ©2024

You can include any text here. The text can be modified upon generating your brochure.