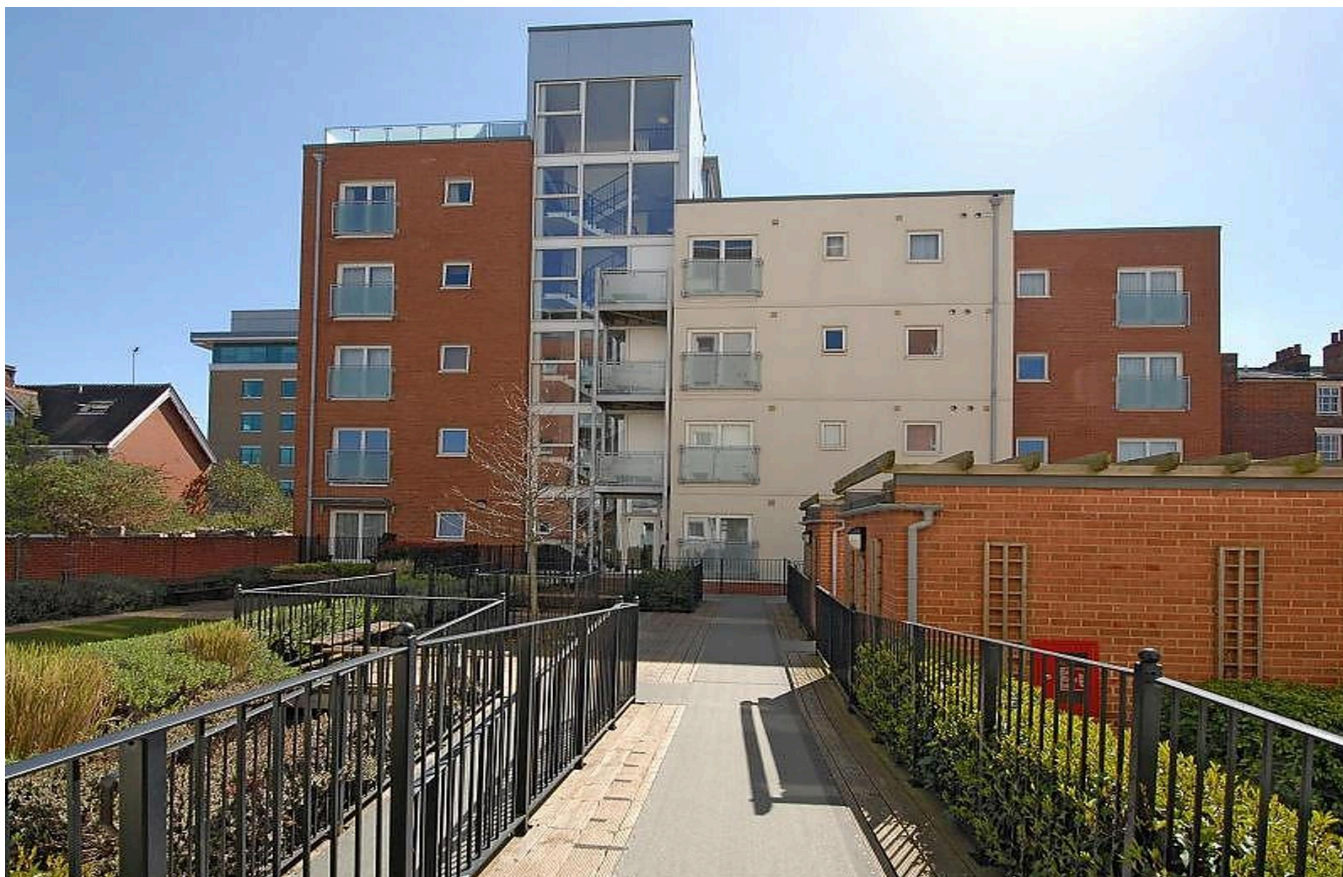


Property ref: 1035

## Malcolm Place, Caversham Road, RG1 7AX

£1,250 PCM

**HASLAM'S**  
Lettings



A recently refurbished, town centre third floor apartment which has an impressive living room with a private balcony and doors leading to a juliet balcony which overlooks the communal gardens.

Reading Council Tax Band D

Broadband/Mobile Info: Connections available. For an indication of specific speeds and supply of Broadband and Mobile, we advise applicants go to the Ofcom website Broadband and Mobile Coverage Checker.

**Available 13/07/2026**

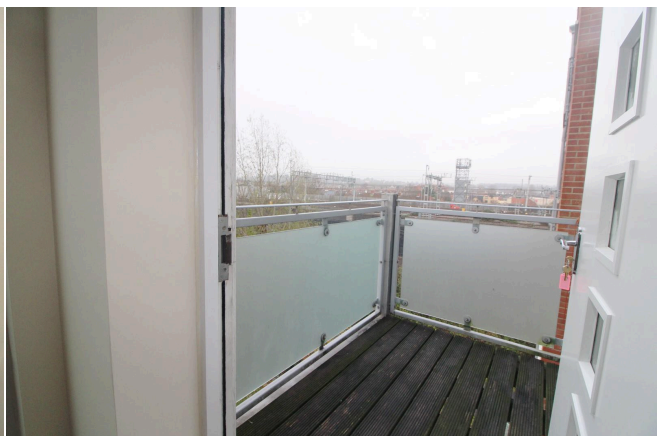
- Two double bedrooms; master with en-suite shower room
- Generous open plan living area with Juliet balcony; video tour available
- Well fitted kitchen area with built-in appliances
- Walking distance of mainline station and Reading town centre
- Gas central heating; EPC Rating: B
- Furnished; Managed by HASLAM'S

\*Fees For Assured Periodic Tenancies: when you rent a property from us you will be required to pay a sum equivalent to one weeks' rent for a holding deposit. Upon successful application, this amount will be off set against your first months' rent. You will also be required to pay a security deposit equivalent to 5 weeks' rent which will be held and protected in line with Deposit legislation. For more information about our fees please visit: [www.haslams.net](http://www.haslams.net)  
Fees for all other tenancies (Non Housing Act Tenancies / Company Lets): when you rent a property from us we will charge you a one-off fee per property. This charge is the equivalent of 15 days of the monthly rental charge (+VAT) with a minimum fee of £450 (inc.VAT) up to a maximum of £650 (inc.VAT). Other fees may apply depending on your circumstances.

**0118 960 1055**

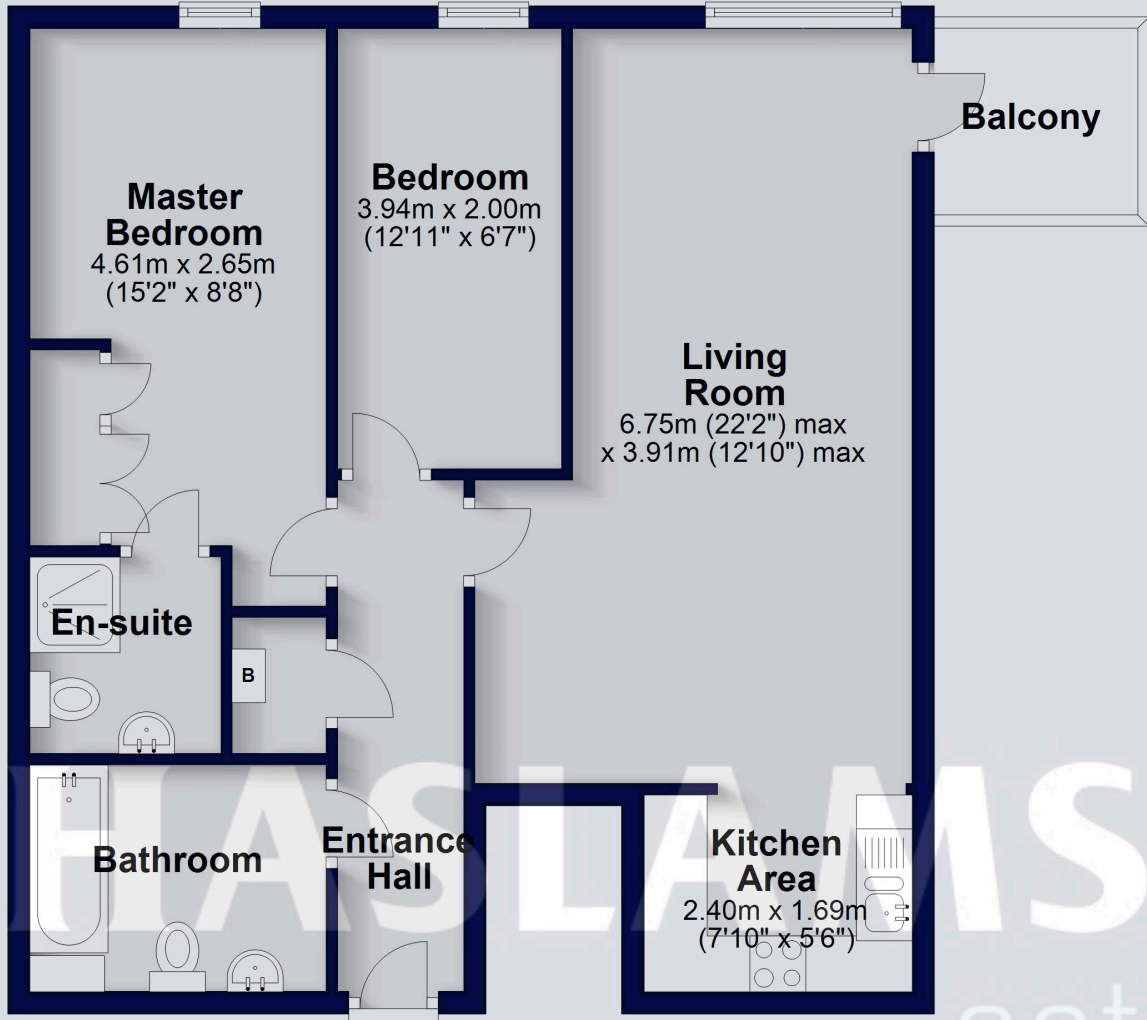
**[lettings@haslams.net](mailto:lettings@haslams.net) [www.haslams.net](http://www.haslams.net)**

**Haslams Estate Agents Ltd, 159 Friar Street, Reading, Berkshire, RG1 1HE**



### Third Floor

Approx. 64.9 sq. metres (698.6 sq. feet)



Total area: approx. 64.9 sq. metres (698.6 sq. feet)

This floorplan is for illustrative purposes only and is not to scale. The total area includes all the areas shown.

Plan produced using PlanUp.