



Edith Road, W14

£500,000

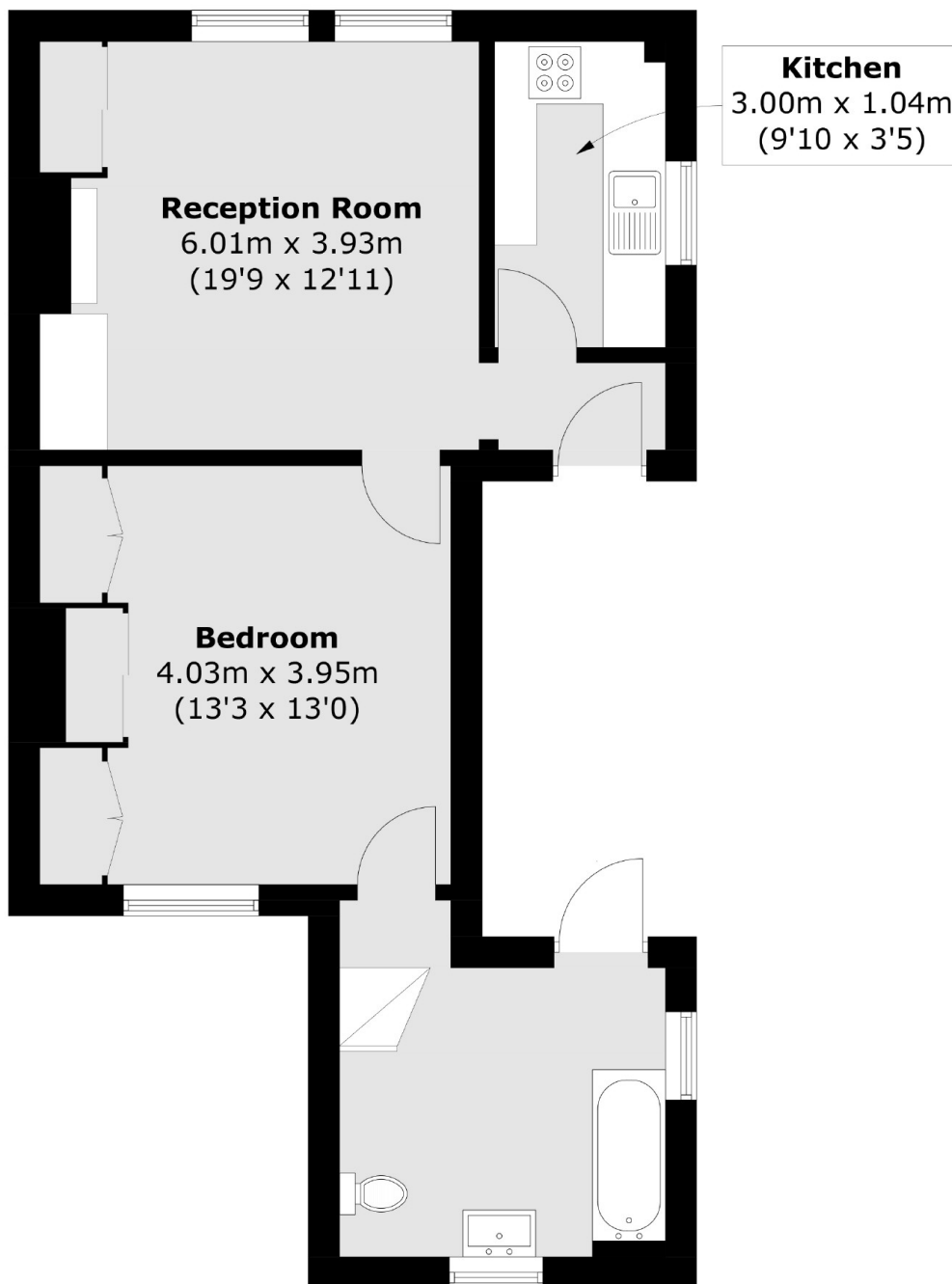
A spacious one bedroom apartment situated on the first floor with a large private balcony. The property offers fantastic natural light throughout, a living area and separate kitchen, a double bedroom with ample storage and a modern bathroom.

Located in probably one of the best roads in West Kensington within two hundred yards to Barons Court underground station and the A4 for easy access into and out of Central London.

Features

- Share Of Freehold
- One Bedroom
- First Floor
- Balcony
- No Chain
- Excellent Location

Edith Road, London, W14



Total area (approx.): 49.9 sq. m (537.1 sq. ft)