



Acton Lane, W4

£450,000

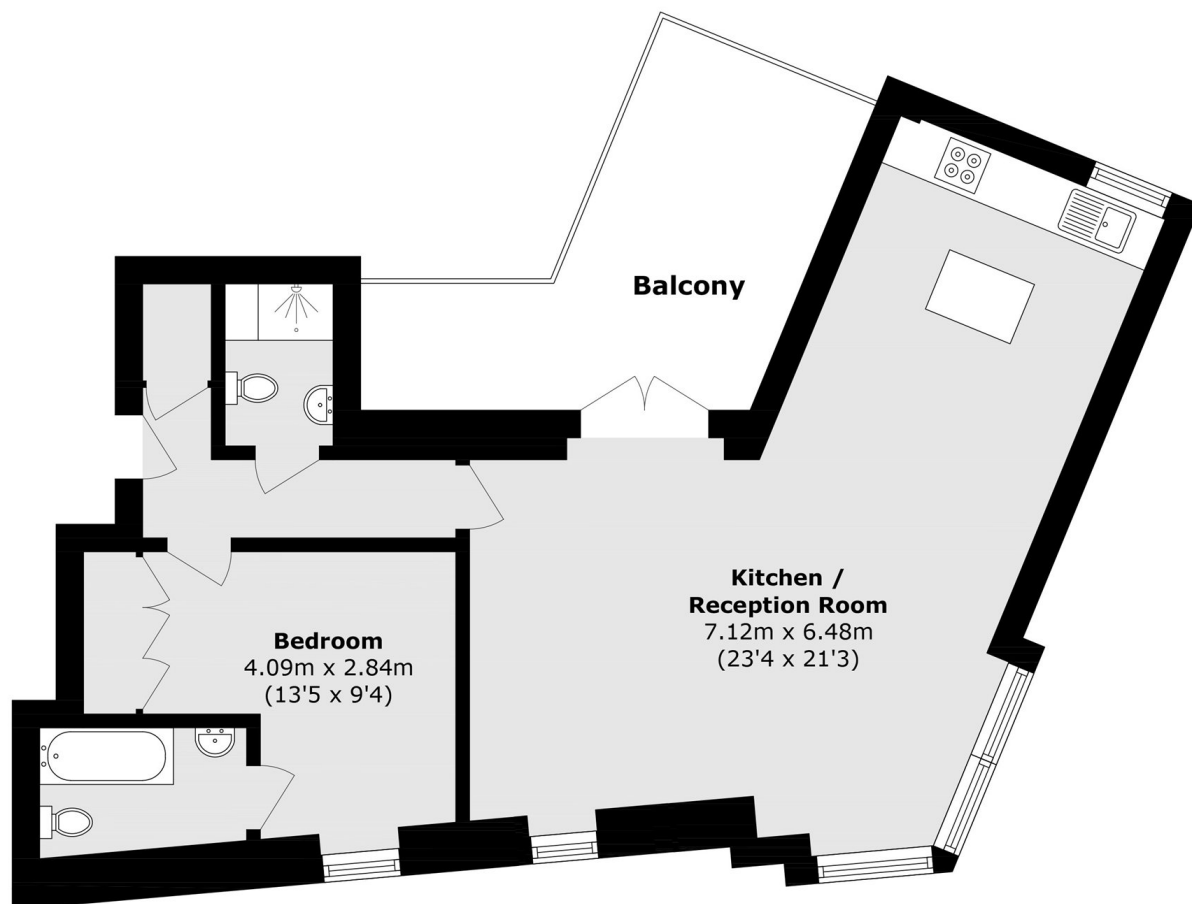
A contemporary, larger than average one double bedroom apartment with two bathrooms, an impressive private balcony and over 600 sq/ft of accommodation.

Acton Lane is moments from Chiswick Park and Gunnersbury stations, with Chiswick High Road's shops, cafés and restaurants nearby. The A4/M4 provides excellent access into Central London and Heathrow.

Features

- One Double Bedroom
- Two Bathrooms
- Large Private Balcony
- Lift Access
- Close To Transport
- No Onward Chain

Acton Lane,
London, W4



Total area (approx.): 56.1 sq. m (603.8 sq. ft)
Balcony area (approx.): 13.2 sq. m (142.0 sq. ft)