



First Floor Flat

St Stephen's Gardens | | London | W2 5NJ

£4,050 Per month

ESON2
REAL ESTATE

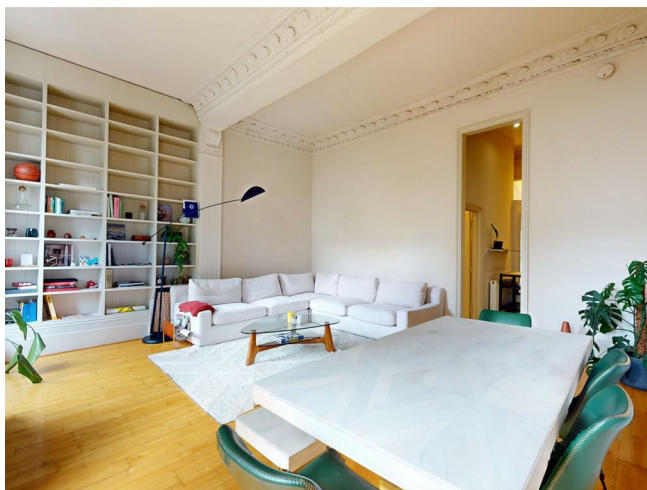
Key features

- Light-filled with high ceilings
- Open-plan reception area
- Private balcony
- Near Westbourne Grove
- Close to Notting Hill
- Excellent transport links

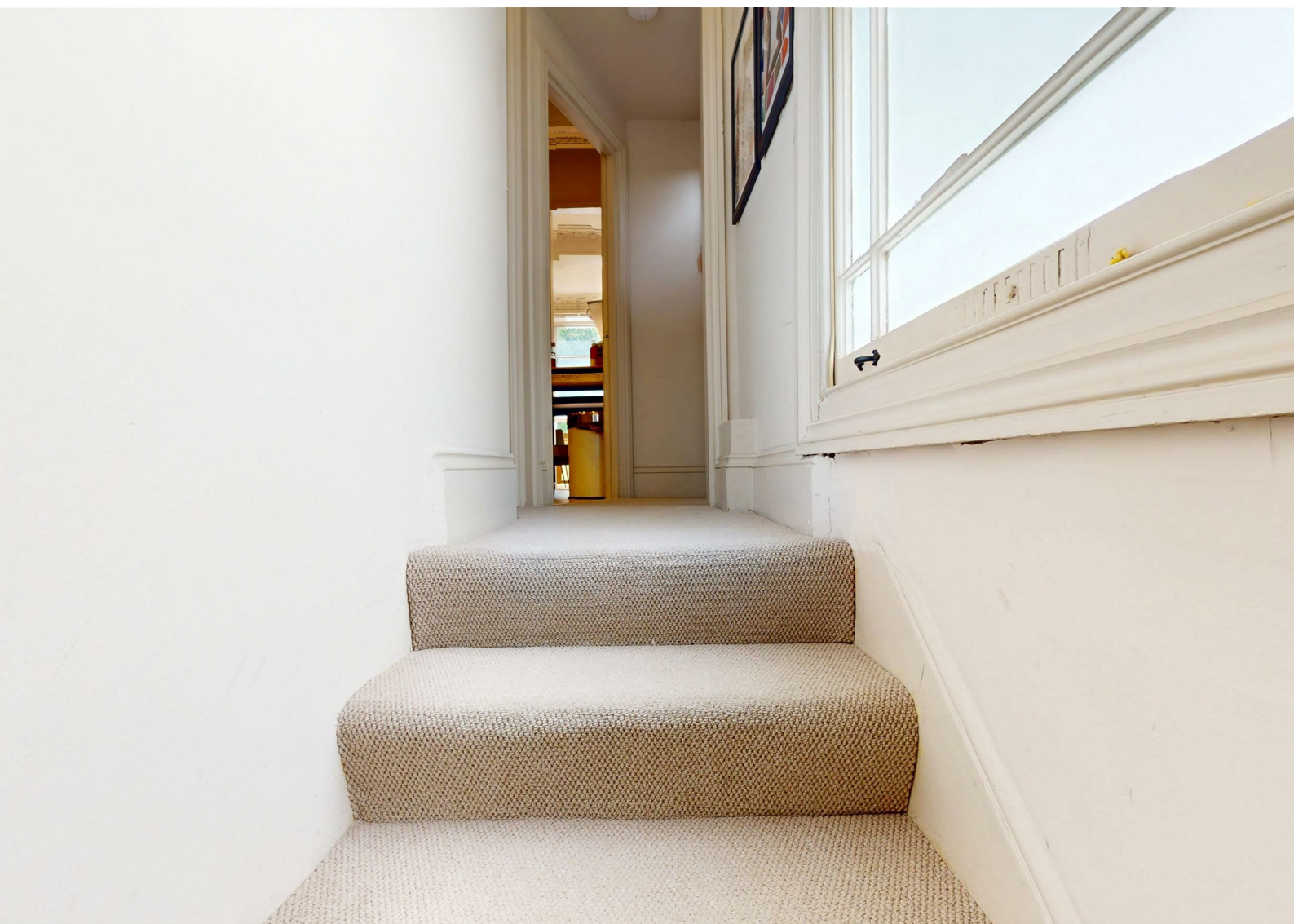
Description

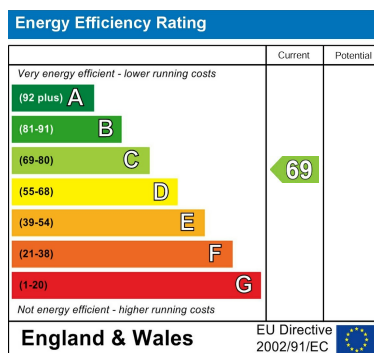
A beautifully renovated two-bedroom apartment in a prestigious period building, overlooking tranquil communal gardens. Light-filled interiors feature high ceilings, ornate cornicing, an open-plan reception with bespoke kitchen, plus a private balcony. Moments from Westbourne Grove and Notting Hill, with excellent transport links.

Directions



An exceptional two-bedroom residence in a prestigious white stucco-fronted period building, overlooking beautifully maintained communal gardens. This refined apartment combines grand architectural heritage with sophisticated contemporary design.





Council Tax Band E EPC Rating C



301 Michelin House 81 Fulham road
London
Greater London
SW3 6RD
07920 257649
fayeel@eson2.co.uk
www.eson2.co.uk