

## 29 Allington Court Outwood Common Road, Billericay - CM11 2JB

£230,000 Leasehold

Stunning 2 bedroom first-floor apartment renovated just 18 months ago, this property boasts a sleek white high gloss kitchen equipped with integrated appliances, complemented by a modern bathroom suite featuring a luxurious walk-in shower. In addition to the tastefully designed interior, residents can benefit from lift access to all floors, ample non-allocated parking, and a communal drying room for added convenience. Council Tax band: C ~ EPC Energy Efficiency Rating: D



**tyler estates**

01277 626181

[www.tylerestates.co.uk](http://www.tylerestates.co.uk)





### Entrance Hall

Neutral decoration with grey carpet extending from here through to the living and bedroom areas with up to date electric Dimplex wall heater.

### Open plan living

19' 6" x 10' 11" (5.95m x 3.34m)

A light filled lounge with the décor theme continuing into this wonderful open plan living space. The window looks out onto the street for you to see the world go by. Delivering lounge, dining and kitchen areas with its modern high gloss white units and integrated appliances including eye-level combination microwave and electric oven, fridge, freezer and Baumatic 2 ring hob. There is space for a washing machine which could stay by prior arrangement with the vendor.



### Bedroom One

13' 6" x 8' 11" (4.11m x 2.73m)

A light and airy double bedroom fitted with soft grey carpet.

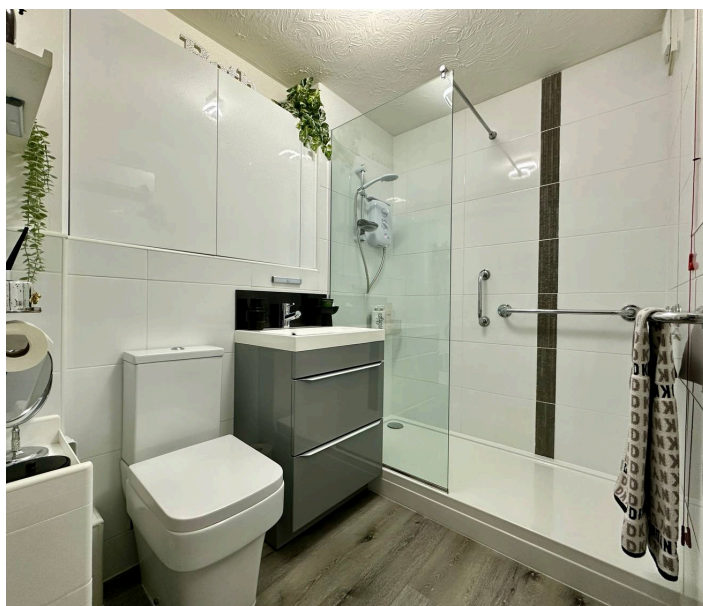
### Bedroom Two

9' 1" x 7' 1" (2.77m x 2.17m)

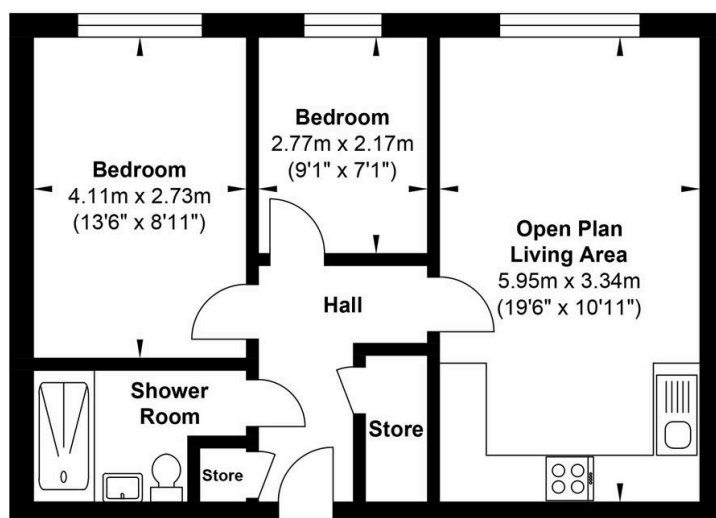
With a second bedroom to this apartment, this offers versatility of use. Ideal for guests but could also be used for formal dining, craft room or even separate dressing room if required. The décor theme throughout the flat is continued here.

### Shower Room

Modern suite with convenient yet stylish walk in shower, handbasin with drawer vanity and WC. The walls are fully



## 29 Allington Court



Gross Internal Floor Area : 50.2 m2 ... 540 ft2

Whilst every attempt has been made to ensure the accuracy of the floor plan contained here, measurements of doors, windows, rooms and any other items are approximate and no responsibility is taken for any error, omission, or mis-statement. This plan is for illustrative purposes only and should be used as such by any prospective purchaser. The services, systems and appliances shown have not been tested and no guarantee as to their operability or efficiency can be given.