

Still Walk, SE1

£1,300,000

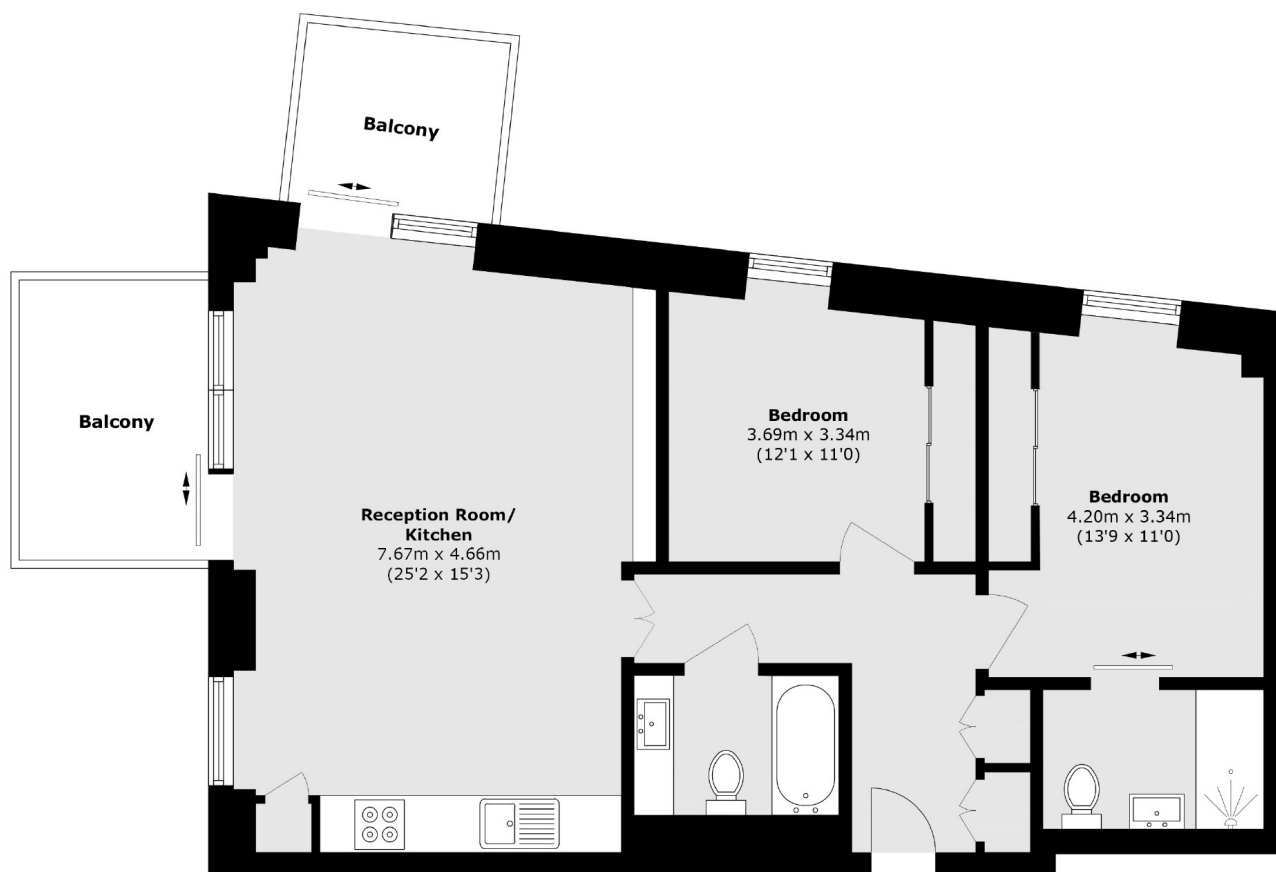
Situated in the prestigious One Tower Bridge development, this two double bedroom apartment is in immaculate condition and boasts a large open plan kitchen living space, two bathrooms, two private balconies, views of The Shard and ample storage.

Located only 0.2 miles from London Bridge station, Godwin House offers excellent transport links to anywhere across the capital and is surrounded by restaurants, shops and cafés.

Features

- Two Double Bedrooms
- Gym, Spa and Pool
- 24 Hour Concierge
- Two Private Balconies
- Chain Free
- Valid EWS1 Form

Still Walk, London, SE1



Dexters

Canada Water
Montreal House
Surrey Quays Road
London
Sales
020 7650 5144

Energy Rating: B. We aim to make our particulars both accurate and reliable. However they are not guaranteed; nor do they form part of an offer or contract. If you require clarification on any points then please contact us, especially if you're traveling some distance to view. Please note that appliances and heating systems have not been tested and therefore no warranties can be given as to their good working order.

 **RICS** | Regulated
Estate Agent
and Letting Agent

dexters.co.uk