

84 Northfield Avenue, London, W13 9RR

020 8840 5151



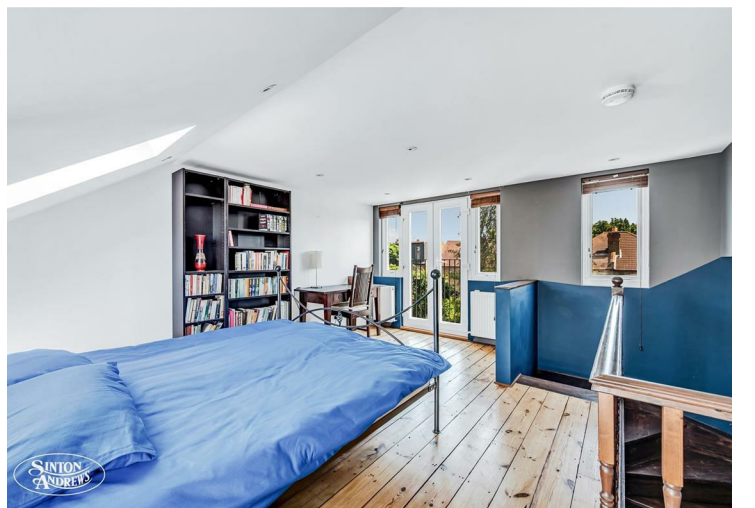
**Freehold / House - Terraced**

## Dudley Gardens

**£1,075,000**

\*\*\*Offered to the market on a chain free basis\*\*\*. A four bedroom Edwardian family home with a South facing garden and moments from Lammas Park.

- Four bedrooms, two bathrooms + downstairs WC
- South-facing garden
- Excellent local schools
- Piccadilly & Elizabeth line stations close by
- Moments from Lammas & Walpole Parks
- No onward chain



**Freehold / House - Terraced**

# Dudley Gardens, W13 9LU

£1,075,000

The ground floor features a generous through reception room and an extended, well fitted kitchen with large doors leading onto a sunny South-facing landscaped garden. A very useful utility area and WC complete the ground floor.

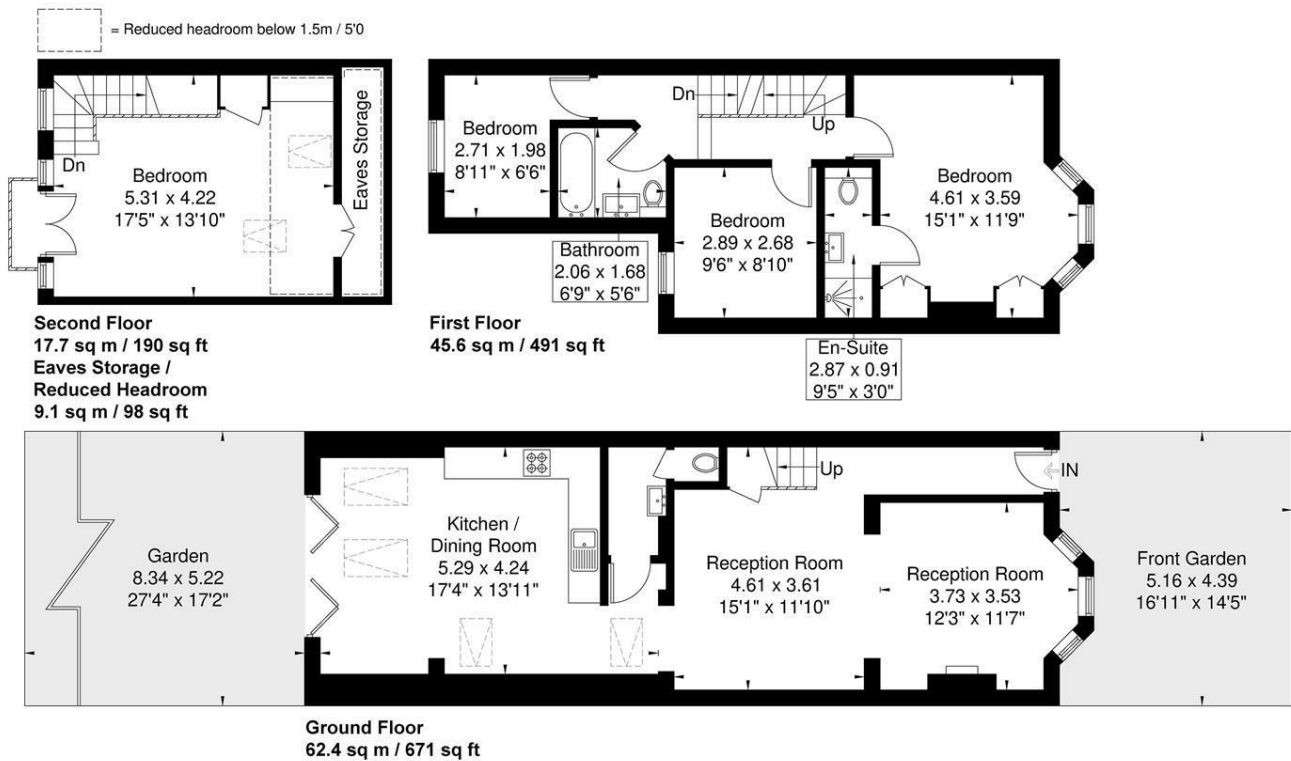
On the first floor there are three bedrooms, one of which boast an en suite shower room, and a smart family bathroom. The well crafted loft conversion now comprises a large double bedroom and plenty of additional storage space.

Dudley Gardens is located directly off Northfield Avenue and a short walk from Northfields Piccadilly Line and West Ealing Elizabeth Line stations. Lammas and Walpole Parks are just moments away along with the array of independent shops, cafes and eateries on Northfield Avenue. Also close by are excellent local schools including Fielding Primary School.



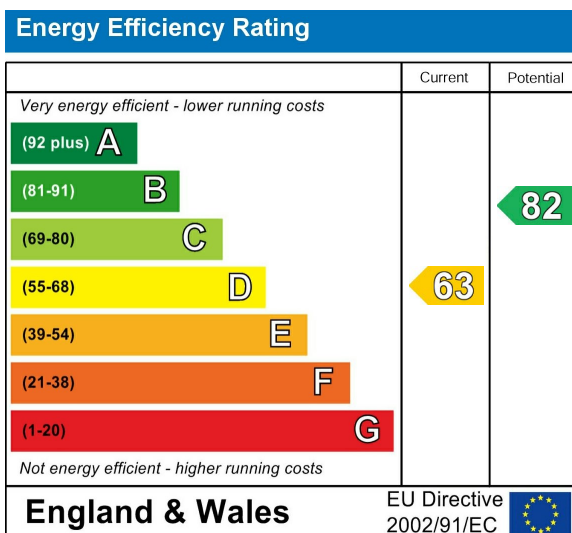
### Dudley Gardens

Approximate Gross Internal Area = 125.7 sq m / 1353 sq ft  
 Eaves Storage / Reduced Headroom = 9.1 sq m / 98 sq ft  
 Total = 134.8 sq m / 1451 sq ft



Although every attempt has been made to ensure accuracy, all measurements are approximate. The floorplan is for illustrative purposes only and not to scale.  
 © www.perspective.co.uk

### Energy Performance Graph



Call us on

**020 8840 5151**

[northfieldsales@sintonandrews.co.uk](mailto:northfieldsales@sintonandrews.co.uk)

[www.sintonandrews.co.uk](http://www.sintonandrews.co.uk)

Agents Note: Whilst every care has been taken to prepare these particulars, they are for guidance purposes only. All measurements are approximate and are for general guidance purposes only and whilst every care has been taken to ensure their accuracy, they should not be relied upon and potential buyers are advised to recheck the measurements.