



Chamberlayne Road, Kensal Rise, NW10  
£1,950 pcm

## Chamberlayne Road, Kensal Rise, NW10

A well-presented and fully furnished two-bedroom first-floor flat located on the popular Chamberlayne Road, NW10.

The property offers two good-sized bedrooms, a bright and spacious reception room, a separate fully fitted kitchen, and a modern family bathroom. The large lounge provides ample space for both relaxing and entertaining, while the separate kitchen offers excellent storage and workspace.

Ideally situated close to local amenities, shops, cafés, and transport links, this property is perfect for professionals, couples, or small families seeking comfortable accommodation in a vibrant and well-connected area.

Available furnished and an early viewing is recommended.

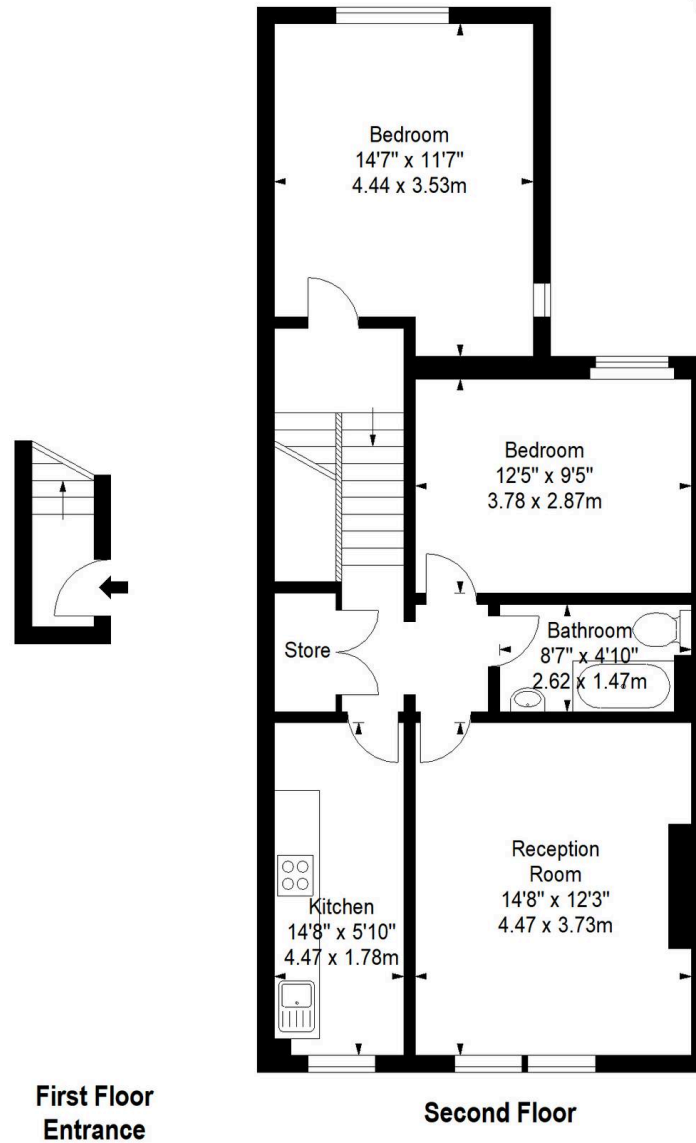
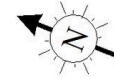




# Chamberlayne Road, NW10

Approx. Gross Internal Area \*

757 Ft<sup>2</sup> - 70.33 M<sup>2</sup>



Every attempt has been made to ensure the accuracy of this floor plan however, measurements are approximate and for illustration purposes only. Measured in accordance with the RICS code of measuring practice. Not to scale



## Black Katz

22 West Hampstead Mews, London - NW6 3BB

02073285000 • [Thomas@blackkatz.com](mailto:Thomas@blackkatz.com) • [blackkatz.com/](http://blackkatz.com/)