



Connells

Glendyne Close
East Grinstead



Property Description

A well-presented and spacious family home, this attractive property offers versatile accommodation ideal for modern living. Boasting multiple reception areas, it provides ample space for both relaxation and entertaining, complemented by a well-appointed kitchen designed with practicality in mind.

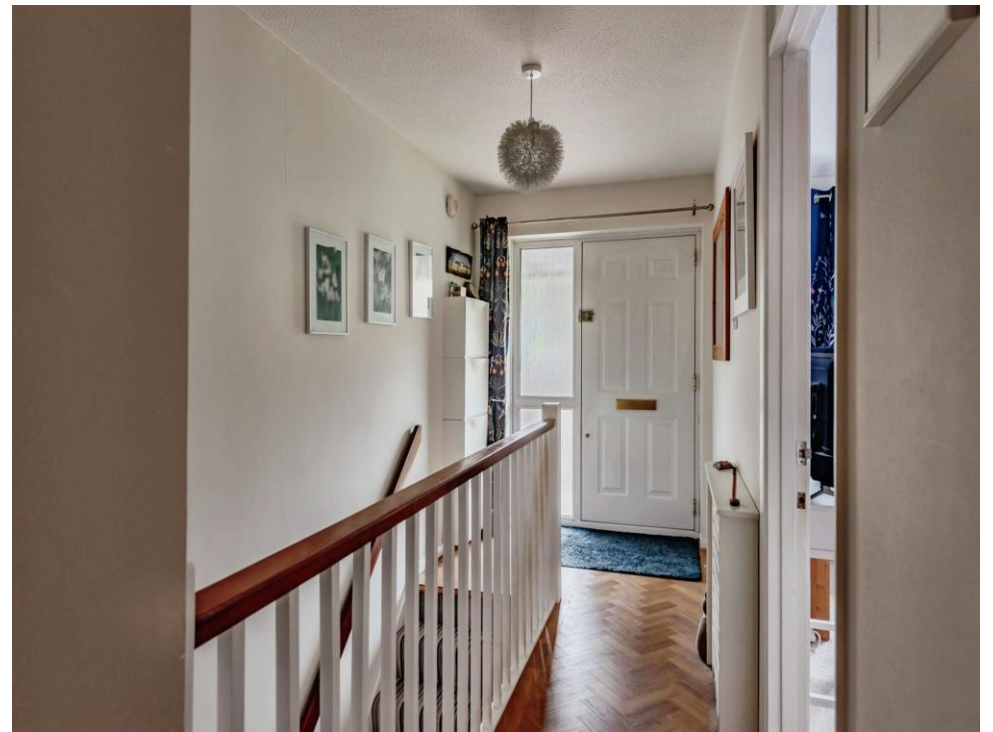
The property features generous bedrooms, offering comfortable living for families of all sizes, alongside well-finished bathrooms that add to the home's overall appeal. Natural light flows throughout, creating a bright and welcoming atmosphere.

Externally, the home benefits from a private garden, perfect for outdoor enjoyment, as well as off-road parking. Situated in a sought-after residential area of East Grinstead, the property is conveniently located for local amenities, reputable schools, and excellent transport links.

Offered to the market in good order throughout, this is a fantastic opportunity for buyers seeking a home ready to move straight into.



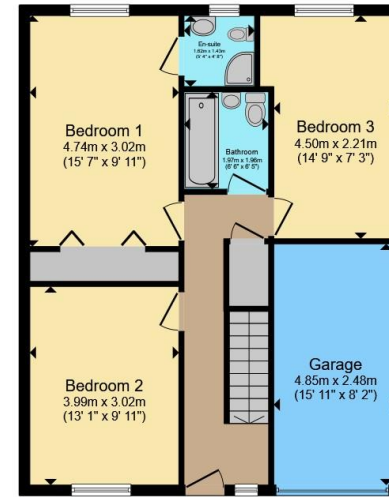








Lower Ground Floor



Ground Floor

Total floor area 153.8 m² (1,656 sq.ft.) approx

This floor plan is for illustrative purposes only. It is not drawn to scale. Any measurements, floor areas (including any total floor area), openings and orientation are approximate. No details are guaranteed, they cannot be relied upon for any purpose and they do not form part of any agreement. No liability is taken for any error, omission or misstatement. A party must rely upon its own inspection(s). Powered by www.propertybox.io



To view this property please contact Connells on

T 01342 325 911
E eastgrinstead@connells.co.uk

90 London Road
 EAST GRINSTEAD RH19 1EP

EPC Rating: Council Tax
 Awaited Band: D

view this property online connells.co.uk/Property/EGR405592

Tenure: Freehold



1. MONEY LAUNDERING REGULATIONS Intending purchasers will be asked to produce identification documentation at a later stage and we would ask for your co-operation in order that there will be no delay in agreeing the sale. 2. These particulars do not constitute part or all of an offer or contract. 3. The measurements indicated are supplied for guidance only and as such must be considered incorrect. Potential buyers are advised to recheck measurements before committing to any expense. 4. We have not tested any apparatus, equipment, fixtures, fittings or services and it is in the buyers interest to check the working condition of any appliances.

Connells Residential is registered in England and Wales under company number 1489613, Registered Office is Cumbria House, 16-20 Hockliffe Street, Leighton Buzzard, Bedfordshire, LU7 1GN. VAT Registration Number is 500 2481 05.

See all our properties at www.connells.co.uk | www.rightmove.co.uk | www.zoopla.co.uk

Property Ref: EGR405592 - 0006