



Squires Court, Highworth, Swindon, SN6 7FH

£295,000  
(Leasehold)

*Hanley's*

## Squires Court Highworth SN6 7FH

A beautifully presented two bedroom first floor apartment with a pleasant open aspect to the front. Situated in a sought after gated development built by Archstone Lifestyle Homes for the over 60's, just a short walk from the High Street and Market Place. The spacious accommodation comprises: Entrance hall, living/dining room, fitted kitchen with built in double oven, hob, fridge, freezer, dishwasher and washing machine. Bathroom, two bedrooms; one with fitted wardrobes and en-suite shower room. The property also benefits from gas radiator central heating and double glazing. Outside there is an allocated parking space, an undercover area for recycling and refuse and an attractive communal walled garden. There is a management charge which includes external repairs and maintenance, gardening, security gate maintenance, window cleaning, tree maintenance, cleaning, repairs and maintenance of common parts. The management costs for 2026 are £672.20 per quarter, Ground rent: £162.50 paid twice a year. Lease : 125 years from 1 January 2010.

**OFFERED FOR SALE WITH NO FORWARD CHAIN.**



**2 Bathrooms**



**2 Bedrooms**



**1 Reception**

**EPC: C80**

**Council Tax Band: C**

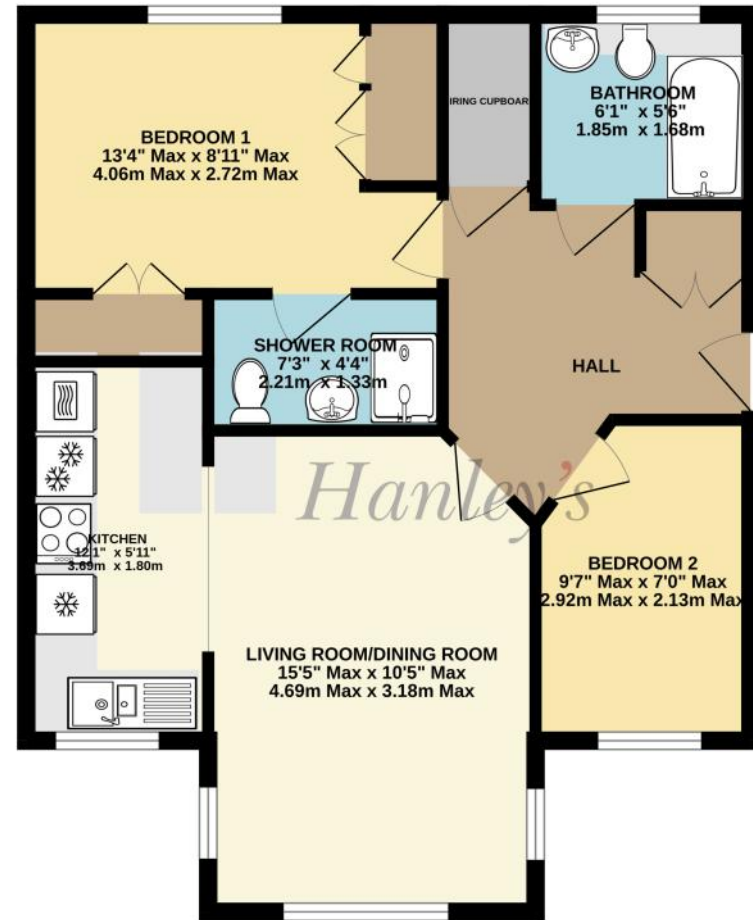
**Tenure: Leasehold**



**DISCLAIMER.** These particulars, whilst believed to be accurate are set out as a general outline for guidance and do not constitute any part of an offer or contract. Intending purchasers should not rely on them as statements or representation of fact, but must satisfy themselves by inspection or otherwise as to their accuracy. No person in this firm's employment has the authority to make or give any representation or warranty in respect of the property. Floor plan measurements and distances are approximate only. We have not carried out a detailed survey nor tested the services, appliances or specific fittings. Your home is at risk if you do not keep up repayments on a mortgage or other loan secured on it.



FIRST FLOOR  
595 sq.ft. (55.2 sq.m.) approx.



TOTAL FLOOR AREA : 595 sq.ft. (55.2 sq.m.) approx.

Whilst every attempt has been made to ensure the accuracy of the floorplan contained here, measurements of doors, windows, rooms and any other items are approximate and no responsibility is taken for any error, omission or mis-statement. This plan is for illustrative purposes only and should be used as such by any prospective purchaser. The services, systems and appliances shown have not been tested and no guarantee as to their operability or efficiency can be given.  
Made with Metropix ©2026

Hanley's Estate Agents  
25 High Street, Highworth, SN6 7AG  
Tel: 01793 762005 mail@hanleys.co.uk

