



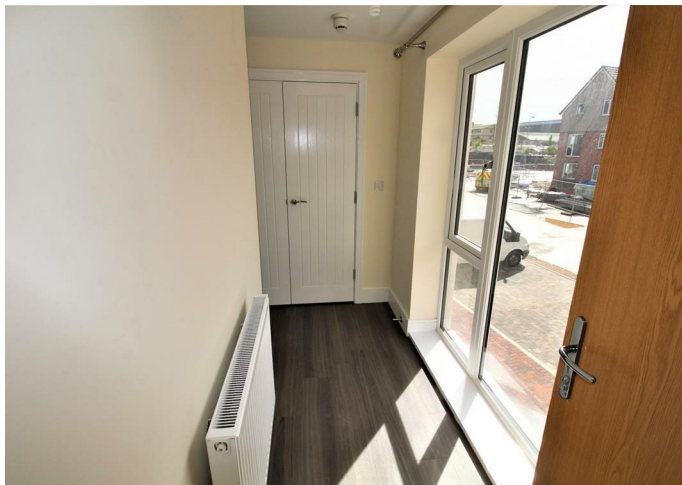
Apartment

# 3 SUSAN HOUSE, DOYLE CLOSE, RUGBY, WARWICKSHIRE, CV21 1RA

## £995

### FEATURES

- Two Bedroom Modern Apartment
- Fitted Kitchen with integrated White Goods
- Reception Room
- Master Bedroom Having En suite
- Ground Floor
- Part Furnished
- Bathroom
- Off Road Parking



**newman**  
property experts

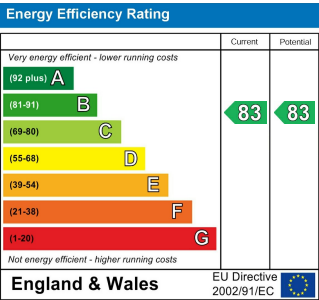
# 2 Bedroom Apartment located in Rugby

MODERN LIVING IN THIS BRAND NEW APARTMENT AVAILABLE FOR IMMEDIATE OCCUPATION This modern two bedroom apartment situated within walking distance of Rugby train station and town centre. The apartment is available immediately and comes part furnished to include oven & hob, integrated fridge and freezer, dishwasher and washing machine. There is two double bedrooms with built in wardrobes in the master bedroom and an en-suite, a second double bedroom and a family bathroom. Outside is one allocated parking space and a designated bike store. Energy Rating B. Council Tax Band B. Deposit £1,148.00. Don't miss out, call one of the team in Rugby to book your viewing.

Call us on  
**01788 820028**

[let@newman.uk.com](mailto:let@newman.uk.com)  
[www.newman.uk.com](http://www.newman.uk.com)

**Council Tax Band**  
**B**



Agents Note: Whilst every care has been taken to prepare these particulars, they are for guidance purposes only. All measurements are approximate and are for general guidance purposes only and whilst every care has been taken to ensure their accuracy, they should not be relied upon and potential buyers are advised to recheck the measurements.