



## SPRING GROVE, W4

£699,000

Two bedroom  
Two bathroom  
Wrap around balcony  
River location  
Gated development private  
Energy rating: c

@marshandparsons  
marshandparsons.co.uk

MARSH &  
PARSONS



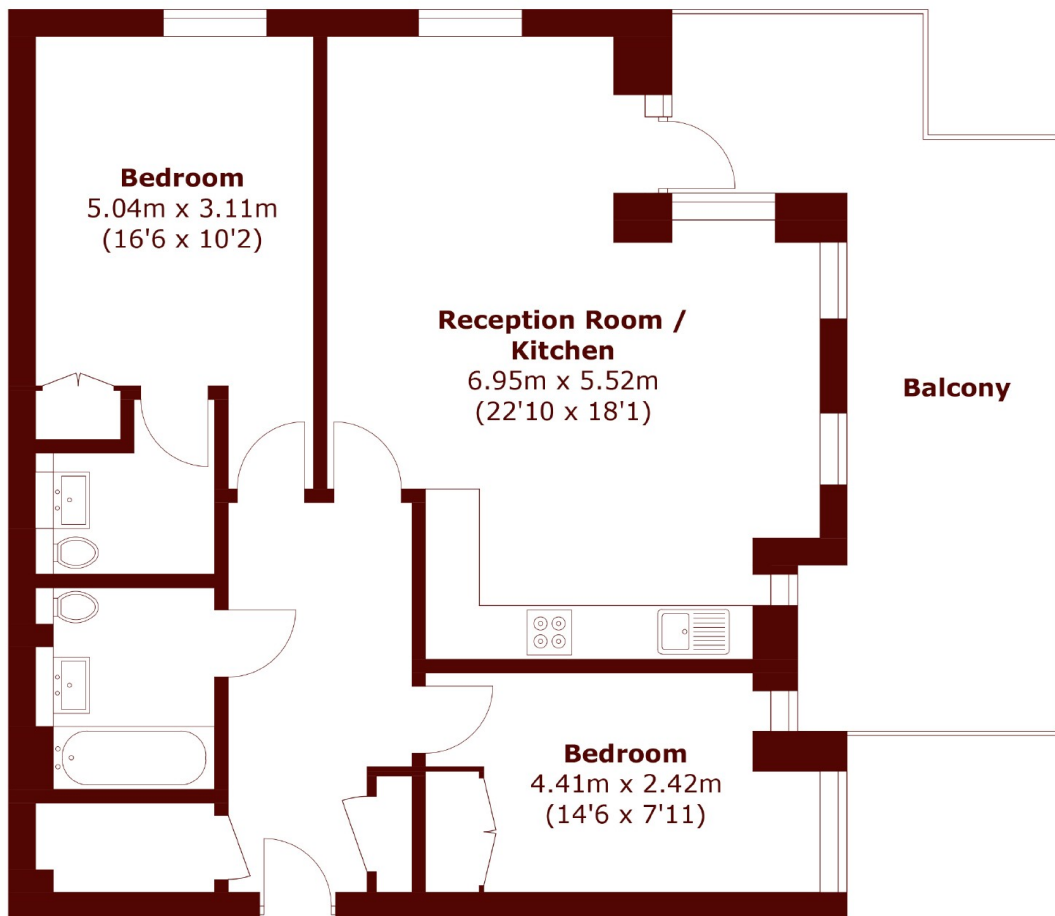
# ABOUT THE PROPERTY

A well-proportioned two bedroom, two bathroom apartment is located moments from the River Thames. This fabulous apartment is located on the second floor (with lift) of this modern development. The property benefits from generous proportions throughout and is well presented. There is a large open-plan kitchen, with fully integrated appliances, that leads onto the spacious reception and dining room which has direct access to the terrace. There are three double bedrooms, two of which is en suite, a family bathroom and a guest cloakroom. Parking is available via separate negotiation.

Spring Grove is a quiet family road located within Strand on the Green.



# STEP INSIDE SPRING GROVE



Total area (approx.): 77.4 sq. m (833.1 sq. ft)  
Balcony: 21.6 sq. m (232.5 sq. ft)

Chiswick  
020 8994 2556

Energy Rating: C We aim to make our particulars both accurate and reliable. However, they are not guaranteed; nor do they form part of an offer or contract. If you require clarification on any points then please contact us, especially if you're traveling some distance to view. Please note that appliances and heating systems have not been tested and therefore no warranties can be given as to their good working order

MARSH &  
PARSONS