



Cranage
Goostrey Lane



Cranage, CW4 8HE

Goostrey Lane

£650,000



The Property

Positioned down a leafy country lane within the peaceful and semi-rural village of Cranage is Briarwood, an exquisite four-bedroom semi-detached 1920's period home. The property has been thoughtfully refurbished, extended and remodelled by the current owners, to now provide light, spacious and flexible living accommodation in a modern country cottage style. Blending period features and contemporary design cohesively.

Particular mention must be made of the open-plan Living Dining Kitchen with atrium skylight, underfloor heating, island unit and French doors opening to the landscaped rear garden. In addition, a convenient separate family room off the kitchen provides a cosy retreat or potential home office space, with French doors to the rear garden.

Three double bedrooms provide ideal space for a family or downsizer, as well as a further convenient fourth bedroom providing the opportunity for a home office, nursery or hobbies room.

The property is approached over a tarmac driveway, providing more than ample parking and secured by gates - privacy is instantly established. A beautiful blossom tree and established shrubbery front the property with fabulous views over the adjoining Cheshire countryside. A flagged patio area accessed off the Living Dining Kitchen provides ideal opportunity for alfresco dining and enjoying the tranquility of the plot.

Briarwood is perfectly positioned within a lovely rural position off a long, leafy lane in Cranage whilst being ideally positioned to access the vibrant town of Knutsford alongside nearby access to the M6 and all other major network links to the North West and beyond.

Directions

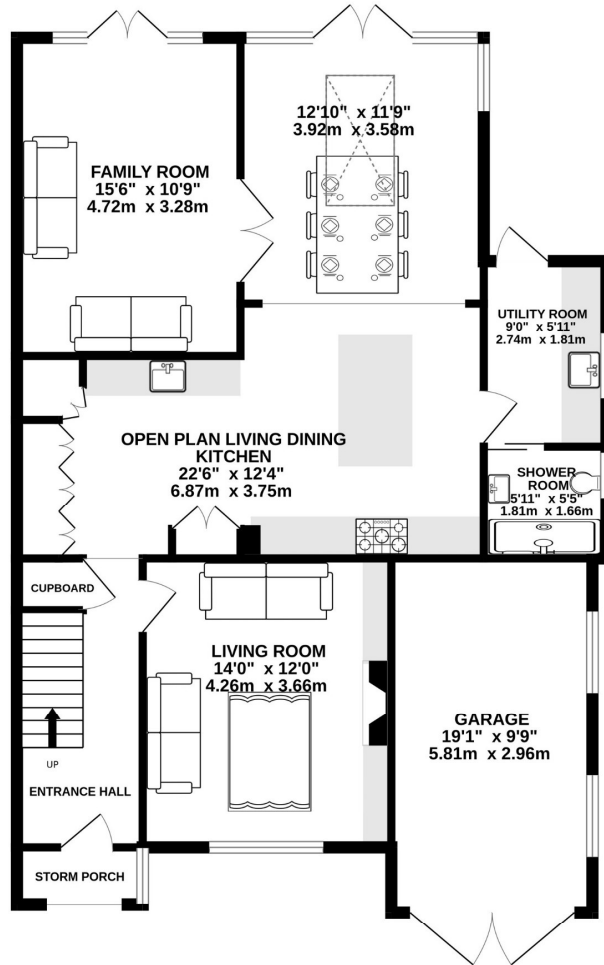
From Knutsford Town Centre proceed along Toft Road (A50) which turns into Holmes Chapel Road and London Road, proceed though Allstock onto Knutsford Road and at the crossroads turn left into Goostrey Lane where the property will soon be seen on your left.

- Immaculately presented semi-detached property situated in a lovely semi-rural location
- Spacious & flexible living accommodation
- Living, dining kitchen with integrated appliances & separate utility room
- Four bedrooms
- Two bathrooms
- Private, enclosed garden
- Gated driveway providing ample off road parking
- Garage

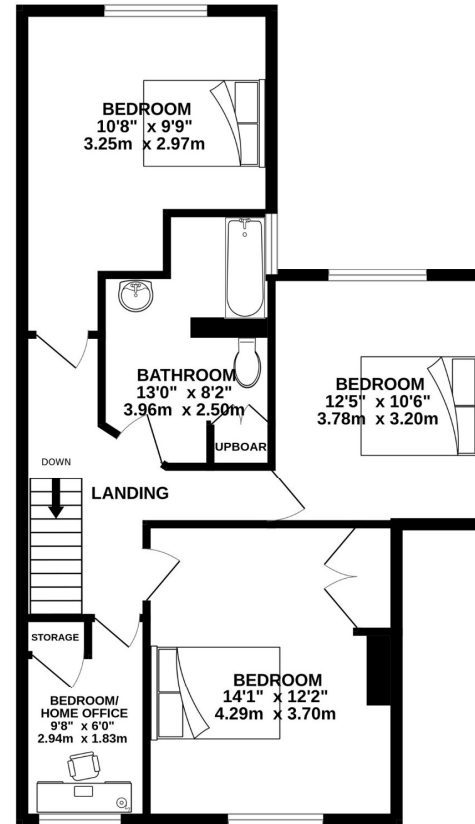
Postcode – CW4 8HE
Tenure – Freehold
Local Authority – Cheshire East
Council Tax – Band D
EPC - D



GROUND FLOOR
1083 sq.ft. (100.6 sq.m.) approx.



1ST FLOOR
677 sq.ft. (62.9 sq.m.) approx.



TOTAL FLOOR AREA : 1760 sq.ft. (163.5 sq.m.) approx.

Whilst every attempt has been made to ensure the accuracy of the floorplan contained here, measurements of doors, windows, rooms and any other items are approximate and no responsibility is taken for any error, omission or mis-statement. This plan is for illustrative purposes only and should be used as such by any prospective purchaser. The services, systems and appliances shown have not been tested and no guarantee as to their operability or efficiency can be given.
Made with Metropix ©2026

103 King Street, Knutsford, Cheshire, WA16 6EQ

01565 654 000

E: info@irlamsestateagents.co.uk

www.irlamsestateagents.co.uk

I1021_ Printed by Ravensworth 01670 713330

Irlams (Estate Agents) Ltd for themselves and for the vendors or lessors of this property whose agents they are give notice that:

- (a) The particulars are set out as a general outline only for the guidance of intending purchasers or lessees, and do not constitute, nor constitute part of, an offer or contract;
- (b) All descriptions, dimensions, references to condition and necessary permissions for use and occupation, and other details are given in good faith and are believed to be correct but any intending purchasers or lessees should not rely on them as statements or representations of fact, but must satisfy themselves by inspection or otherwise as to the correctness of each of them;
- (c) No person in the employment of Irlams (Estate Agents) Ltd has any authority to make or give any representation or warranty whatsoever in relation to this property.
- (d) We believe the information above to be accurate at the point it was obtained however you may wish to make a final check with your Solicitor or with us in respect of anything above you feel crucial before you proceed with the purchase of this property.

