



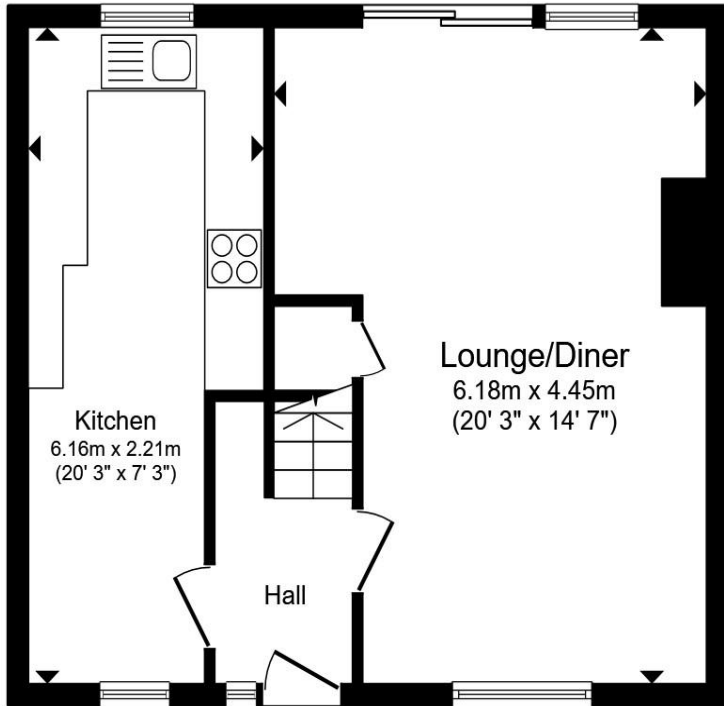
Spring Plat, Crawley RH10 7DE

welcome to

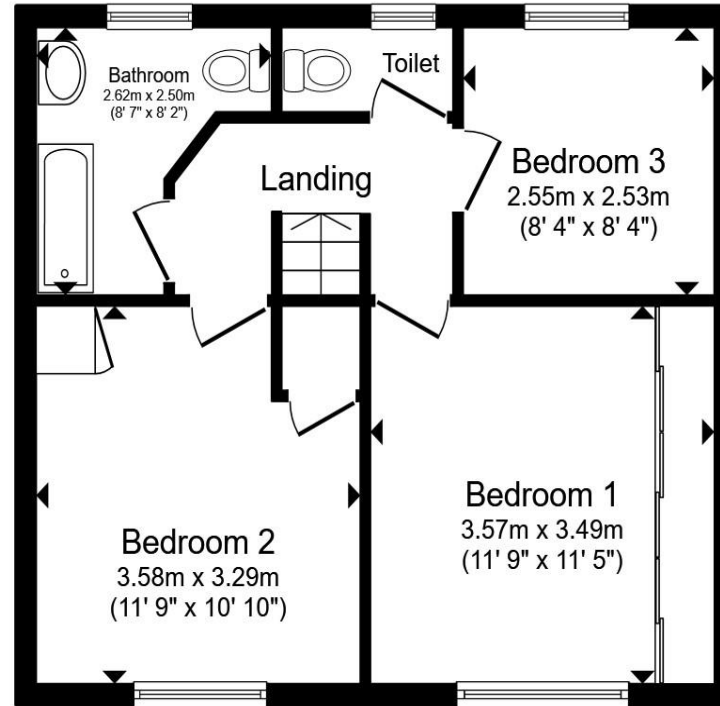
Spring Plat, Crawley

Well-presented three-bedroom home offering a fitted kitchen, spacious lounge/diner with garden access, and three well-proportioned bedrooms. Benefits include a family bathroom, separate WC and a generous rear garden with patio and lawn.





Ground Floor



First Floor

Total floor area 85.3 m² (918 sq.ft.) approx

This floor plan is for illustrative purposes only. It is not drawn to scale. Any measurements, floor areas (including any total floor area), openings and orientation are approximate. No details are guaranteed, they cannot be relied upon for any purpose and they do not form part of any agreement. No liability is taken for any error, omission or misstatement. A party must rely upon its own inspection(s). Powered by www.propertybox.io



welcome to

Spring Plat, Crawley

- Three-bedroom mid-terrace home
- Spacious lounge/dining room
- Fitted kitchen
- Family bathroom plus separate WC
- Generous rear garden with patio and lawn

Tenure: Freehold EPC Rating: D
Council Tax Band: C

offers over
£335,000



Please note the marker reflects the
postcode not the actual property

view this property online fox-and-sons.co.uk/Property/CRA112011



Property Ref:
CRA112011 - 0003

1. MONEY LAUNDERING REGULATIONS Intending purchasers will be asked to produce identification documentation at a later stage and we would ask for your co-operation in order that there is no delay in agreeing the sale. 2. These particulars do not constitute part or all of an offer or contract. 3. The measurements indicated are supplied for guidance only and as such must be considered incorrect. Potential buyers are advised to recheck measurements before committing to any expense. 4. We have not tested any apparatus, equipment, fixtures or services and it is in the buyers interest to check the working condition of any appliances. 5. Where an EPC, or a Home Report (Scotland only) is held for this property, it is available for inspection at the branch by appointment. If you require a printed version of a Home Report, you will need to pay a reasonable production charge reflecting printing and other costs. 6. We are not able to offer an opinion either written or verbal on the content of these reports and this must be obtained from your legal representative. 7. Whilst we take care in preparing these reports, a buyer should ensure that his/her legal representative confirms as soon as possible all matters relating to title including the extent and boundaries of the property and other important matters before exchange of contracts.

Fox & Sons is a trading name of Sequence (UK) Limited which is registered in England and Wales under company number 4268443, Registered Office is Cumbria House, 16-20 Hockliffe Street, Leighton Buzzard, Bedfordshire, LU7 1GN. VAT Registration Number is 500 2481 05.

Description

The ground floor opens with an entrance hall providing access to a well-proportioned kitchen positioned to the front of the property. From the hall, stairs rise to the first floor, while the main living accommodation is located to the right of the property. The spacious lounge/diner offers an open and versatile living area with ample space for both seating and dining, and enjoys direct access to the rear garden, making it ideal for everyday living and entertaining.

To the first floor, a central landing leads to three bedrooms, all of which are well laid out. Two of the bedrooms are generous doubles, with a further third bedroom suitable as a single room, nursery, or home office. The family bathroom and a separate WC are also accessed from the landing, providing practical and convenient accommodation for a family household.

Externally, the rear garden is spacious and features a patio area, which leads on to a garden that is mainly laid to lawn, offering an excellent outdoor space for relaxation, entertaining, or family use.


fox & sons



01293 520521



Crawley@fox-and-sons.co.uk



34 High Street, CRAWLEY, West Sussex, RH10
1BW



fox-and-sons.co.uk