



Connells

Bridgelands
Cophorne



Property Description

Tucked away in an exclusive position shared by just three homes, this impressive four-bedroom detached property offers spacious and versatile accommodation, ideal for modern family living.

Upon entering, you are welcomed by an entrance hall featuring a coat/shoe cupboard, and cloakroom. A dedicated study provides the perfect space for home working.

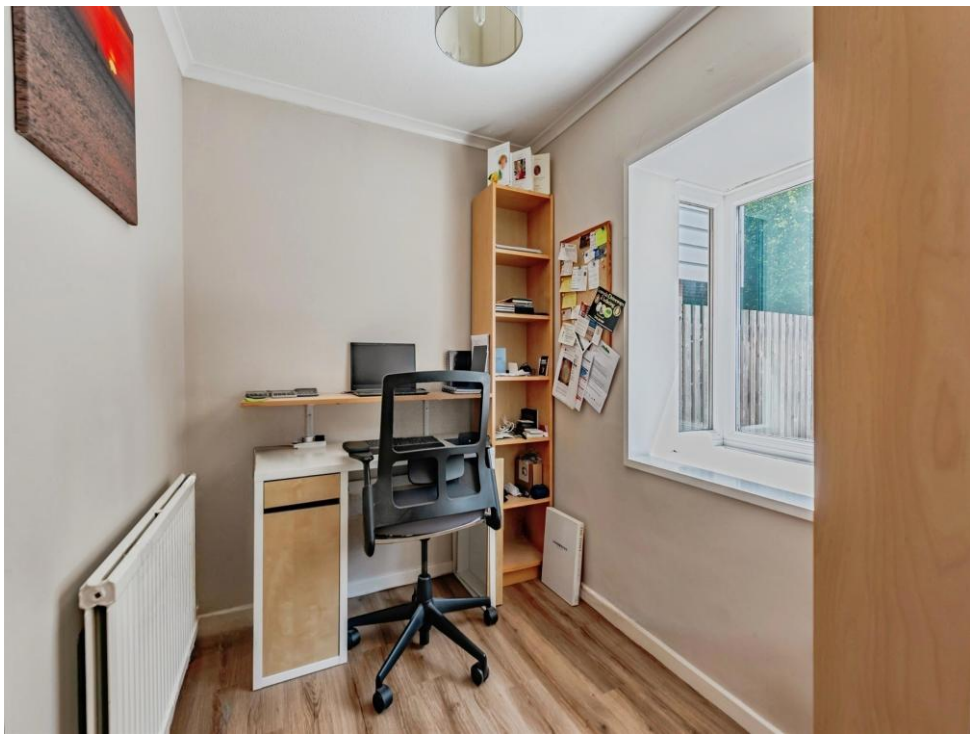
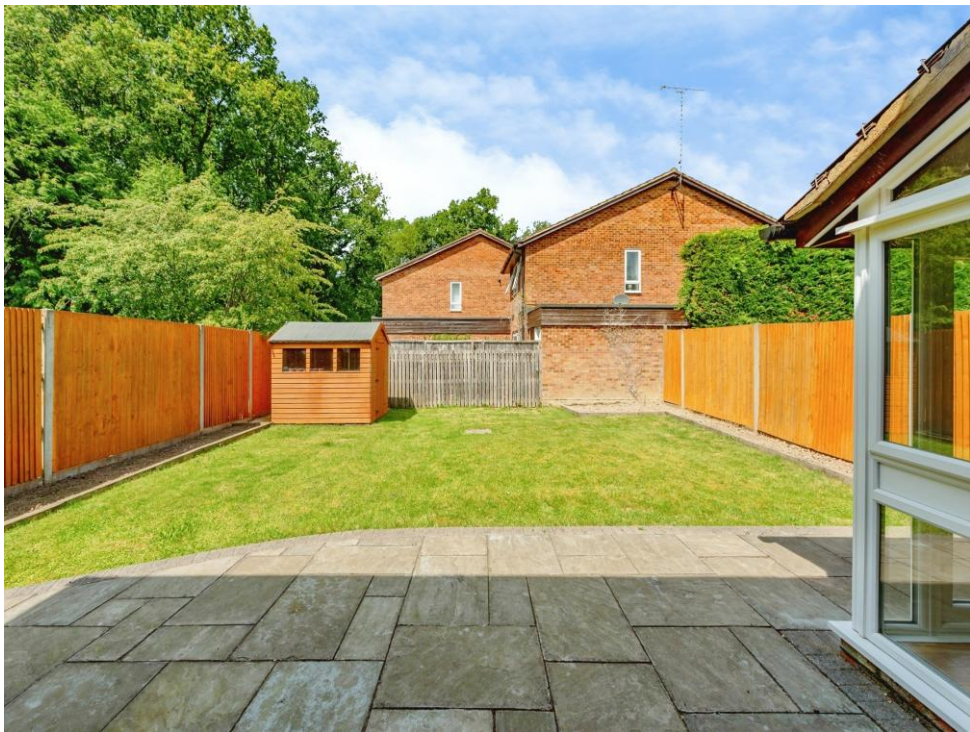
To the rear of the property, the generous living room is flooded with natural light from the large French doors that open onto the garden, while enjoying the views over the west facing rear garden.

The heart of the home is the kitchen/breakfast room, fitted with a modern range of units and integrated appliances. A breakfast bar offers an ideal spot for casual dining, while the layout easily accommodates a dining table or seating area. There is also a convenient utility room.

The first-floor landing is bright, leading to four well-proportioned bedrooms. The principal bedroom benefits from built-in wardrobes and a contemporary en-suite shower room. The remaining bedrooms all offer built-in storage and are served by a modern family bathroom.

Outside, the well-maintained garden enjoys a desirable westerly aspect with a patio spanning the width of the property, perfect for outdoor dining. The remainder of the garden is laid to lawn with borders. To the front, there is a double garage and off-road parking.

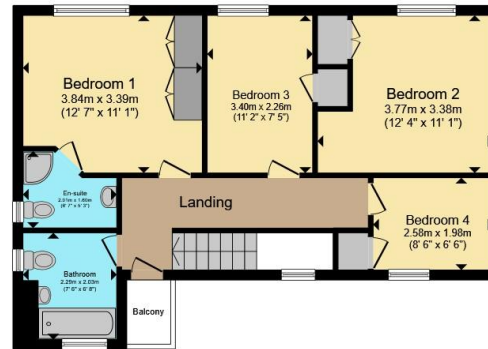




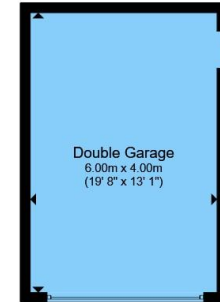




Ground Floor



First Floor



Garage

Total floor area 143.3 m² (1,542 sq.ft.) approx

This floor plan is for illustrative purposes only. It is not drawn to scale. Any measurements, floor areas (including any total floor area), openings and orientation are approximate. No details are guaranteed, they cannot be relied upon for any purpose and they do not form part of any agreement. No liability is taken for any error, omission or misstatement. A party must rely upon its own inspection(s). Powered by www.propertybox.io



To view this property please contact Connells on

T 01342 717 727
E copthorne@connells.co.uk

4 Copthorne Bank
 COPTHORNE RH10 3QX

EPC Rating: Council Tax
 Awaited Band: F

view this property online connells.co.uk/Property/COP404313

Tenure: Freehold



1. MONEY LAUNDERING REGULATIONS Intending purchasers will be asked to produce identification documentation at a later stage and we would ask for your co-operation in order that there will be no delay in agreeing the sale. 2. These particulars do not constitute part or all of an offer or contract. 3. The measurements indicated are supplied for guidance only and as such must be considered incorrect. Potential buyers are advised to recheck measurements before committing to any expense. 4. We have not tested any apparatus, equipment, fixtures, fittings or services and it is in the buyers interest to check the working condition of any appliances.

Connells Residential is registered in England and Wales under company number 1489613, Registered Office is Cumbria House, 16-20 Hockliffe Street, Leighton Buzzard, Bedfordshire, LU7 1GN. VAT Registration Number is 500 2481 05.

See all our properties at www.connells.co.uk | www.rightmove.co.uk | www.zoopla.co.uk

Property Ref: COP404313 - 0003