



£1,250 pcm
Neptune Way, Southampton, Hampshire, SO14

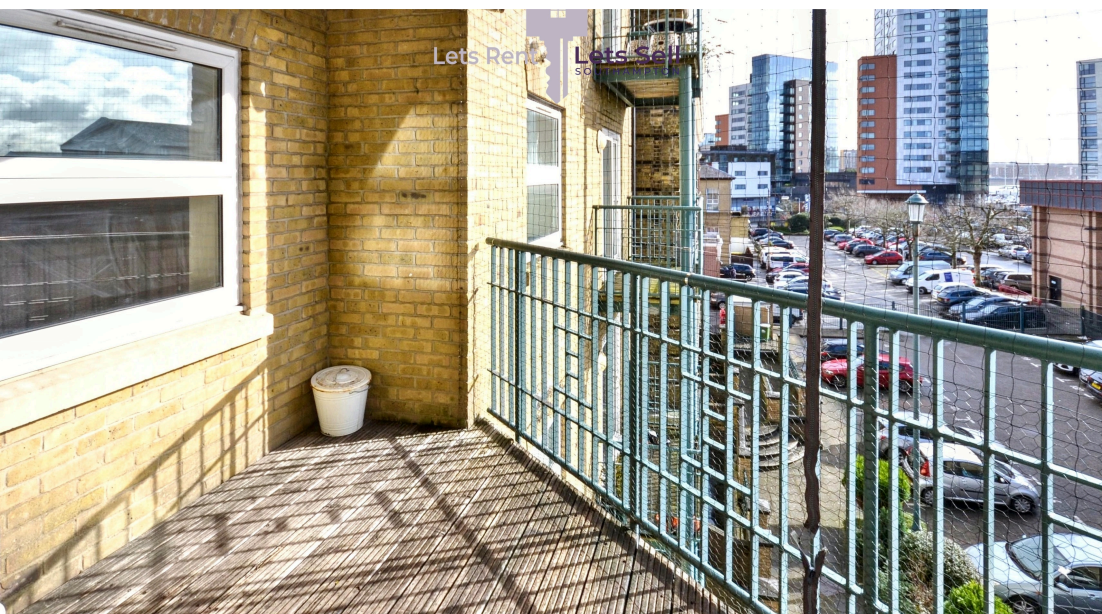
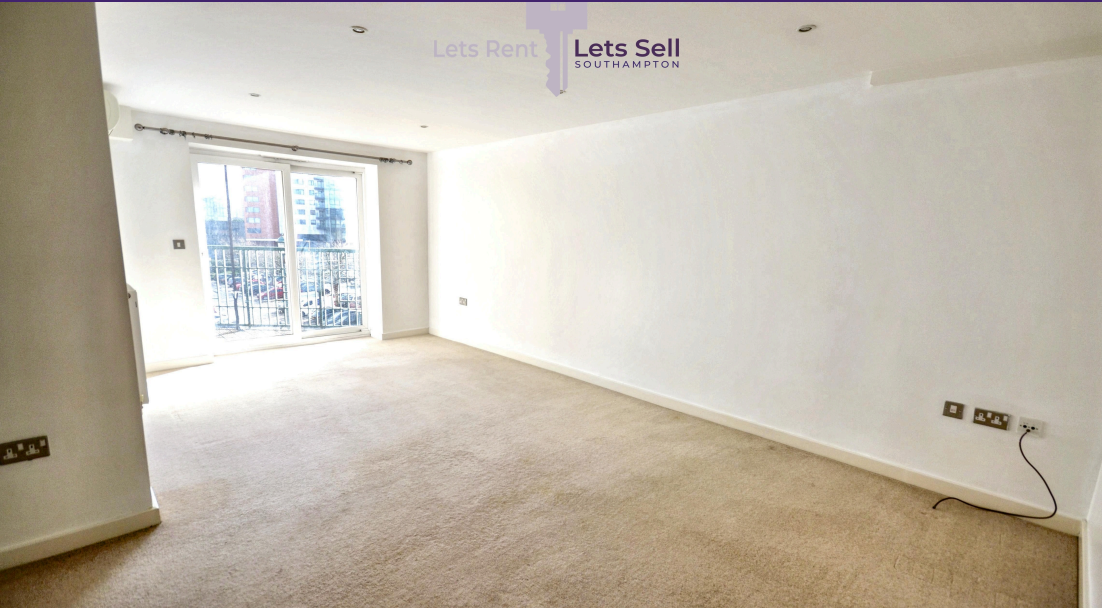


 **2**
Bedrooms

 **2**
Bathrooms

15 London Road Southampton SO152AE |
enquiries@letsrentsouthampton.co.uk

02380 434448



Lets Rent are pleased to offer this well-presented two-bedroom, two-bathroom apartment located in the popular Ocean Village area of Southampton, SO14.

The property comprises a large lounge/diner with access to a balcony, a modern fitted kitchen with integrated appliances, master bedroom with en-suite shower room and built-in wardrobes, a further double bedroom and a family bathroom.

Situated in a fantastic location close to Ocean Village Marina, Oxford Street, local bars, restaurants, shops and Southampton City Centre, the property is ideal for professionals looking for modern city living with excellent transport links nearby.

Call us now to arrange a viewing.

AVAILABLE END OF JUNE / START OF JULY TWO BEDROOMS TWO BATHROOMS

Lets Rent are pleased to offer this well-presented two-bedroom, two-bathroom apartment located in the popular Ocean Village area of Southampton, SO14.

The property comprises a large lounge/diner with access to a balcony, a modern fitted kitchen with integrated appliances, master bedroom with en-suite shower room and built-in wardrobes, a further double bedroom and a family bathroom.

Situated in a fantastic location close to Ocean Village Marina, Oxford Street, local bars, restaurants, shops and Southampton City Centre, the property is ideal for professionals looking for modern city living with excellent transport links nearby.

Call us now to arrange a viewing.

Council Tax Band: C

EPC Rating: C

Holding Deposit: £288.00

Deposit: £1,442.00

Parking -ONE ALLOCATED SPACE

Broadband and mobile phone coverage can vary depending on the provider and property location. Prospective tenants are advised to check the Ofcom broadband and mobile coverage checker, as well as with their chosen provider directly, to confirm availability, speeds and signal before proceeding with a tenancy.



Energy performance certificate (EPC)

Flat 14 1, Neptune Way SOUTHAMPTON SO14 3FN	Energy rating	Valid until: 25 September 2029
	C	Certificate number: 9718-5061-6281-5301-6934

Property type	Mid-floor flat
Total floor area	74 square metres

Rules on letting this property

Properties can be let if they have an energy rating from A to E.

You can read [guidance for landlords on the regulations and exemptions \(https://www.gov.uk/guidance/domestic-private-rented-property-minimum-energy-efficiency-standard-landlord-guidance\)](https://www.gov.uk/guidance/domestic-private-rented-property-minimum-energy-efficiency-standard-landlord-guidance).

Energy rating and score

This property's energy rating is C. It has the potential to be C.

[See how to improve this property's energy efficiency.](#)

The graph shows this property's current and potential energy rating.

Properties get a rating from A (best) to G (worst) and a score. The better the rating and score, the lower your energy bills are likely to be.

For properties in England and Wales:

the average energy rating is D
the average energy score is 60

Score	Energy rating	Current	Potential
92+	A		
81-91	B		
69-80	C	77 C	78 C
55-68	D		
39-54	E		
21-38	F		
1-20	G		

Breakdown of property's energy performance

Features in this property

Features get a rating from very good to very poor, based on how energy efficient they are. Ratings are not based on how well features work or their condition.

Assumed ratings are based on the property's age and type. They are used for features the assessor could not inspect.

Feature	Description	Rating
Wall	Cavity wall, as built, insulated (assumed)	Good
Wall	Timber frame, as built, insulated (assumed)	Good
Window	Fully double glazed	Average
Main heating	Boiler and radiators, electric	Very poor
Main heating control	Programmer, room thermostat and TRVs	Good
Hot water	Electric immersion, off-peak	Poor
Lighting	Low energy lighting in 91% of fixed outlets	Very good
Roof	(another dwelling above)	N/A
Floor	(another dwelling below)	N/A
Secondary heating	None	N/A

Primary energy use

The primary energy use for this property per year is 165 kilowatt hours per square metre (kWh/m²).

How this affects your energy bills

An average household would need to spend **£525 per year on heating, hot water and lighting** in this property. These costs usually make up the majority of your energy bills.

You could **save £33 per year** if you complete the suggested steps for improving this property's energy rating.

This is **based on average costs in 2019** when this EPC was created. People living at the property may use different amounts of energy for heating, hot water and lighting.

Heating this property

Estimated energy needed in this property is:

- 1,415 kWh per year for heating
- 2,070 kWh per year for hot water

Impact on the environment

This property's environmental impact rating is C. It has the potential to be C.

Properties get a rating from A (best) to G (worst) on how much carbon dioxide (CO₂) they produce each year.

Carbon emissions

An average household produces **6 tonnes of CO₂**

This property produces **2.1 tonnes of CO₂**

This property's potential production **1.9 tonnes of CO₂**

You could improve this property's CO₂ emissions by making the suggested changes. This will help to protect the environment.

These ratings are based on assumptions about average occupancy and energy use. People living at the property may use different amounts of energy.

Steps you could take to save energy

Step	Typical installation cost	Typical yearly saving
1. Heat recovery system for mixer showers	£585 - £725	£33

Advice on making energy saving improvements

[Get detailed recommendations and cost estimates \(www.gov.uk/improve-energy-efficiency\)](http://www.gov.uk/improve-energy-efficiency)

Help paying for energy saving improvements

You may be eligible for help with the cost of improvements:

- Heat pumps and biomass boilers: [Boiler Upgrade Scheme \(www.gov.uk/apply-boiler-upgrade-scheme\)](http://www.gov.uk/apply-boiler-upgrade-scheme)
-

Who to contact about this certificate

Contacting the assessor

If you're unhappy about your property's energy assessment or certificate, you can complain to the assessor who created it.

Assessor's name	Peter Orchard
Telephone	07966 876368
Email	info@allinonesurveys.com

Contacting the accreditation scheme

If you're still unhappy after contacting the assessor, you should contact the assessor's accreditation scheme.

Accreditation scheme	Elmhurst Energy Systems Ltd
Assessor's ID	EES/016974
Telephone	01455 883 250
Email	enquiries@elmhurstenergy.co.uk

About this assessment

Assessor's declaration	No related party
Date of assessment	19 September 2019
Date of certificate	26 September 2019
Type of assessment	RdSAP