



Apt 8, 15 Hatton Garden, Liverpool, L3 2HA
£1,100 Per Month

www.
cityresidential
.co.uk



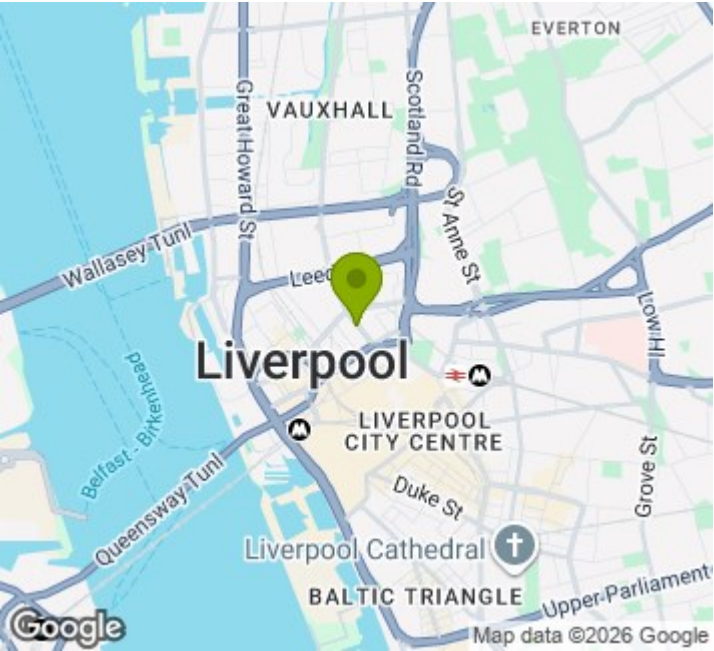
About the Property

Available for immediate move in is this spacious two bedroom duplex, furnished apartment located in the heart of Liverpool City Centre. The property benefits from two double bedrooms, 2 bathrooms, a large living area opening to a fully equipped fitted kitchen.


This development is serviced by a lift to all floors and a allocated car parking space is included in the rent!

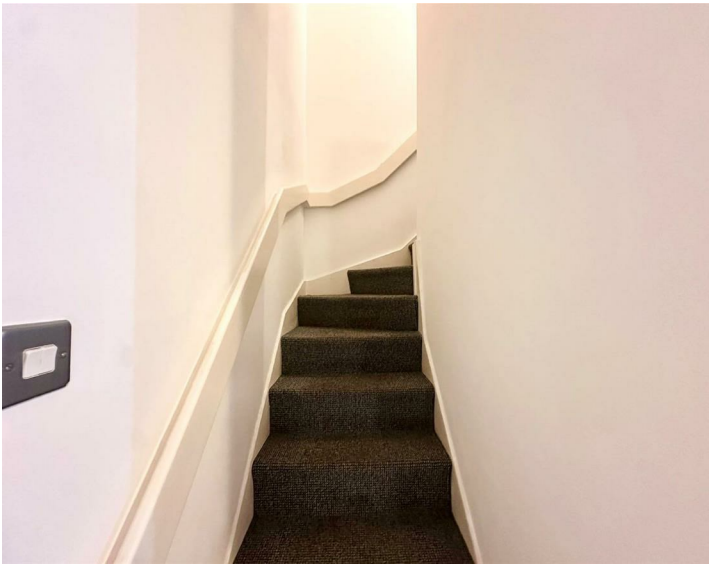
Call us now to arrange a viewing on 0151 231 6100!

- Two Bedroom - Duplex Apartment
- Heart Of The City Centre
- Deposit - £1269
- Allocated Car Park Space
- EPC Rating - E
- Council Tax Band - C
- Immediate Move In



Energy Efficiency Rating

	Current	Potential
Very energy efficient - lower running costs		
(92 plus) A		80
(81-91) B		
(69-80) C		
(55-68) D	51	
(39-54) E		
(21-38) F		
(1-20) G		
Not energy efficient - higher running costs		
England & Wales		EU Directive 2002/91/EC 



City Residential
81/87 Victoria Street, The Old Haymarket, Liverpool L1 6DG
T: 0151 231 6100 F: 0151 231 6105
E: sales@cityresidential.co.uk



WWW.
cityresidential
.co.uk