



Guide Price
£465,000

Freehold

4x  2x  5x 

**The Old Bakery, Mill
Lane, Dover, Kent, CT15**

OVER 60?

Secure this property
for up to **59% less!**

Wards
Helping you move forwards



Main features

- **Flexible Living: with separate areas giving potential for self-contained living, subject to reconfiguration and consents**
- **Shepherdswell offers local facilities**
- **Parking and gardens with patio**
- **Ideal to commute with easy access to A2**
- **Chain free, move-in-ready property**

Accommodation

SPLIT LEVEL GROUND FLOOR

- Entrance Hall
- Lounge: 12'6 x 11'9 (3.81m x 3.58m)
- Dining Room: 12'3 x 10'7 (3.74m x 3.23m)
- Kitchen/Breakfast Room: 25'2 x 7'7 (7.68m x 2.31m)
- Shower Room: 7'5 x 4'9 (2.26m x 1.45m)
- Family Room: 13'4 x 7'8 (4.07m x 2.34m)
- Conservatory: 8'5 x 5'3 (2.57m x 1.60m)
- Bedroom 4: 10'4 7 x 8'0 (3.15m x 2.44m)
- Sitting Room: 13'4 x 10'7 (4.07m x 3.23m)

FIRST FLOOR

- Landing
- Bedroom 1: 15'5 x 12'6 (4.70m x 3.81m)
- Bedroom 2: 12'3 x 8'1 (3.74m x 2.47m)
- Bedroom 3: 9'6 x 9'1 (2.90m x 2.77m)
- Bathroom: 13'1 x 8'1 (3.99m x 2.47m)

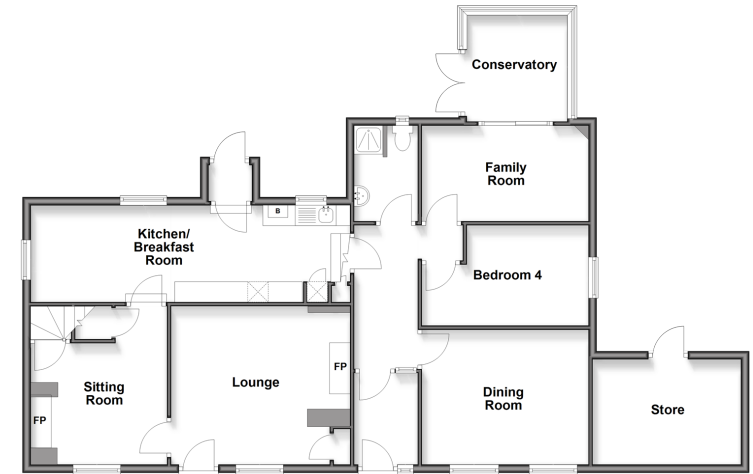
OUTBUILDING

- Double Garage

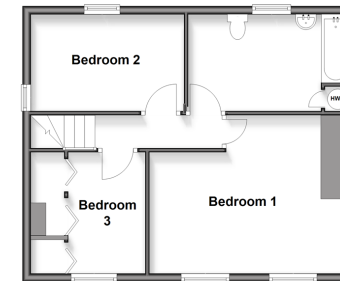
OUTSIDE

- Driveway
- Outside Store Room
- Front and Rear Gardens

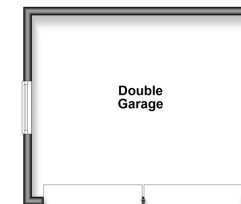
Split Level Ground Floor
Approx. 114.9 sq. metres (1236.4 sq. feet)



First Floor
Approx. 49.5 sq. metres (532.7 sq. feet)



Outbuilding
Approx. 23.8 sq. metres (255.9 sq. feet)



Call Dover - 01304 214876 ■ wardsof Kent.co.uk

- Legal advice should be taken to verify fixtures/fittings, planning, alterations and/or lease details
- Appliances & services are untested, dimensions are approximate and floor plans are not to scale
- Through a Homewise Home For Life Plan people aged 60+ can secure this property for up to 59% less, by purchasing a Lifetime Lease



10735162/20260212/OV/OV