

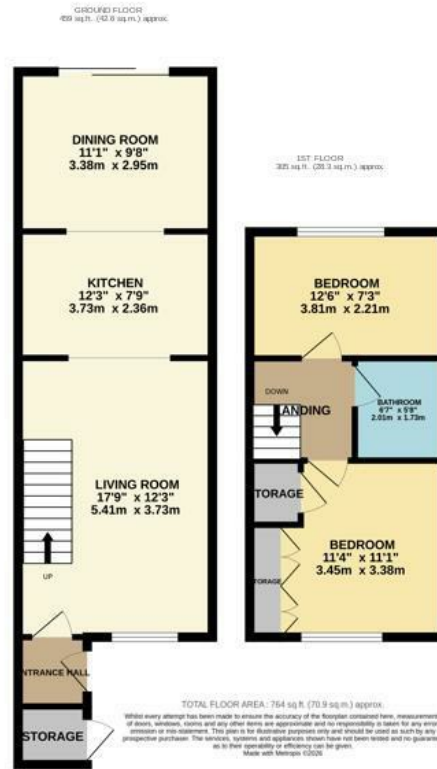
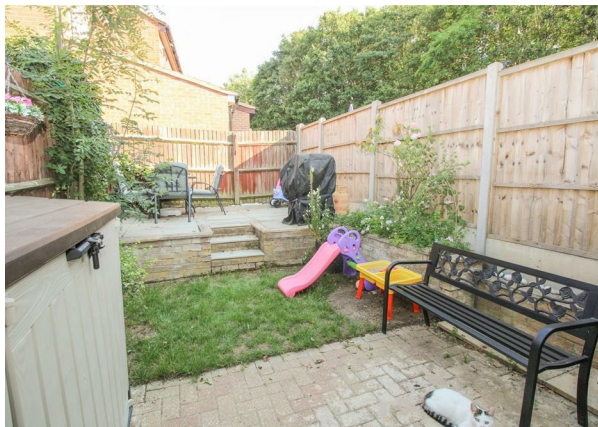


Savoy Wood, Harlow, CM19 5SQ
Guide Price £325,000

2 1 2 C

Savoy Wood, Harlow, CM19 5SQ

GUIDE PRICE: £325,000 - £335,000. Located in the outskirts of Harlow is this extended two double bedroom terraced home with allocated parking. The ground floor offers a light and airy lounge, well maintained kitchen with a range of wall and base units and a separate dining room, whilst upstairs there are two double bedrooms and a bathroom with a white three piece suite. Outside the garden is part laid to lawn and part patio. Savoy Wood is located just off Holmes Meadow, on the outskirts of Harlow and is a popular location with open fields, schools and shops close by.



Energy Efficiency Rating		Environmental Impact (CO ₂) Rating	
Current	Potential	Current	Potential
Very energy efficient - lower running costs		Very environmentally friendly - lower CO ₂ emissions	
(92 plus) A		(92 plus) A	
(81-91) B		(81-91) B	
(69-80) C		(69-80) C	
(55-68) D		(55-68) D	
(39-54) E		(39-54) E	
(21-38) F		(21-38) F	
(1-20) G		(1-20) G	
Not energy efficient - higher running costs		Not environmentally friendly - higher CO ₂ emissions	
England & Wales	EU Directive 2002/91/EC	England & Wales	EU Directive 2002/91/EC

These particulars, whilst believed to be accurate are set out as a general outline only for guidance and do not constitute any part of an offer or contract. Intending purchasers should not rely on them as statements of representation of fact, but must satisfy themselves by inspection or otherwise as to their accuracy. No person in this firm's employment has the authority to make or give any representation or warranty in respect of the property.

T. 01279 216216 E. info@rjestateagents.co.uk

1 Acorn Mews, Harlow, Essex, CM18 6NA www.rjestateagents.co.uk