



## Oakley Street, SW3

£2,350 Per calendar month

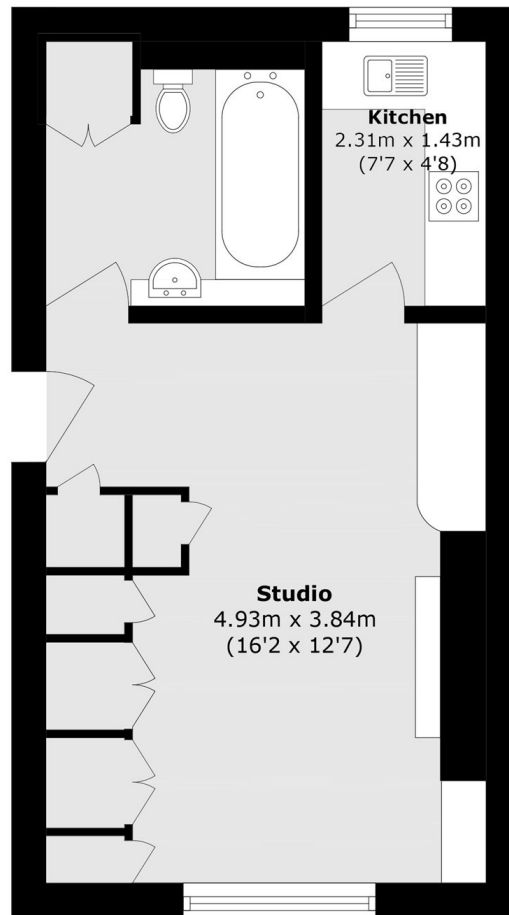
A spacious studio on the third floor of a period conversion on Oakley Street. The flat has a separate kitchen wooden flooring and ample fitted storage.

Between Kings Road and Chelsea Embankment close to Restaurants, amenities and secluded pubs including The Cross Keys, The Phene and The Ivy Chelsea Garden.

### Features

- Wooden Flooring
- High Ceilings
- Fitted Storage
- Great Location
- Ground Floor
- Vacant

# Oakley Street, London, SW3



## Ground Floor

Total area (approx.): 28.2 sq. m (303.5 sq. ft)