



Arlington Road, NW1

£650,000

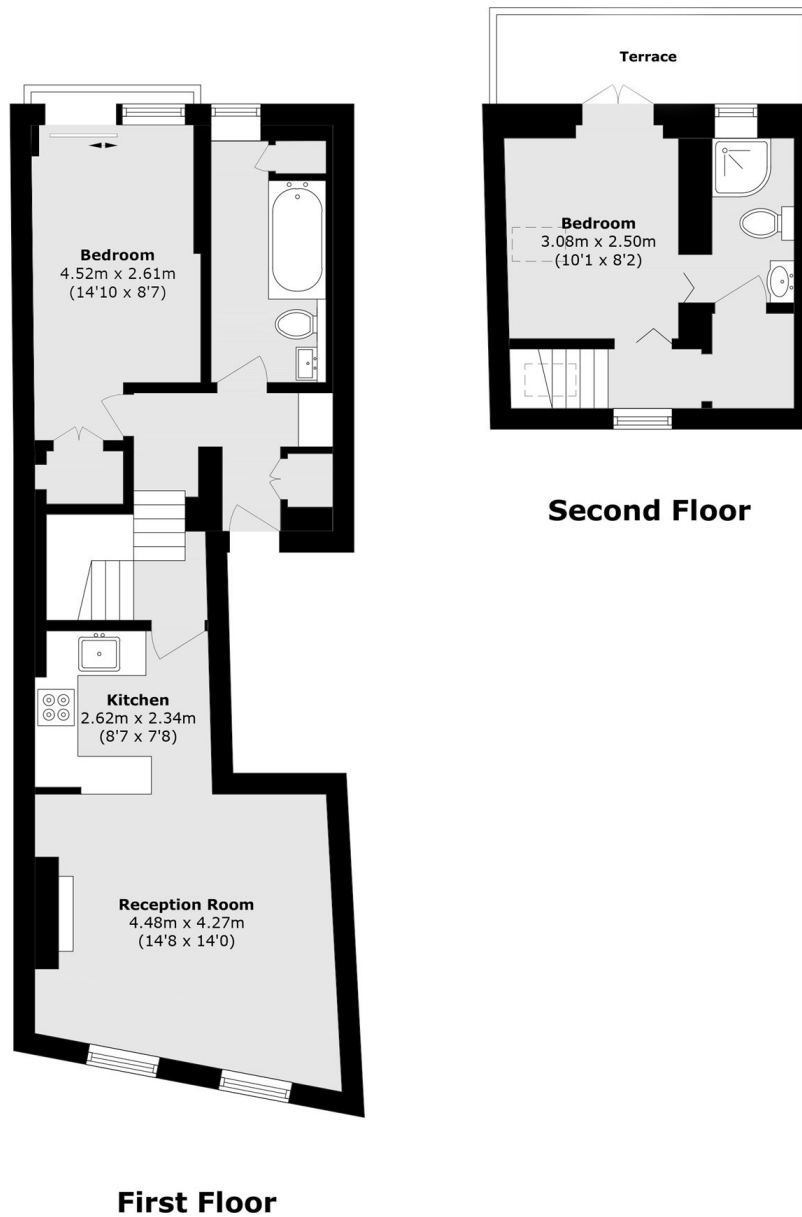
This two double bedroom, two bathroom duplex apartment is in great condition throughout. The apartment has a private terrace an open plan kitchen/ reception room and lots of windows letting in lots of natural light.

Located in the heart of Camden Town and within close proximity to Kings Cross offering numerous transport links on London's Underground lines and both National and International rail lines. The green open spaces of Regents Park and Primrose Hill are also nearby.

Features

Two Double Bedrooms
Private Terrace
Duplex Apartment
Great Condition
Chain Free
Grade II Listed

Arlington Road, London, NW1



Total area (approx.): 66.9 sq. m (720.1 sq. ft)
Terrace area (approx.): 5.6 sq. m (60.2 sq. ft)