



Oldfield Road, TW12

£1,050,000

Dexters



Oldfield Road, TW12

An exceptional five bedroom, three bathroom Edwardian semi detached home, in the sought after Hampton Village Conservation Area, presented in immaculate, turnkey condition and coming with no onward chain!

This is a house that's been properly looked after and tastefully upgraded, while still retaining it's period charm. Rooms are generously proportioned throughout, offering flexible family-friendly living. Original features sit comfortably alongside modern finishes, giving you character without compromise.

The property benefits from a high-specification outbuilding set within the garden, held under its own legal title. Finished to a high specification, with an en-suite shower room, underfloor heating, and full-width bifold doors providing excellent natural light, and direct garden access. Extending to approximately 243 sq ft, the space is currently income-producing offering a great investment.

The expansive south-facing garden is a standout feature, private, secluded, and ideal for summer entertaining.

Ideally located a short walk from Hampton railway station with direct services to London Waterloo station, and moments from Waitrose Hampton. Features a large green, open-air swimming pool, the River Thames, Bushy Park

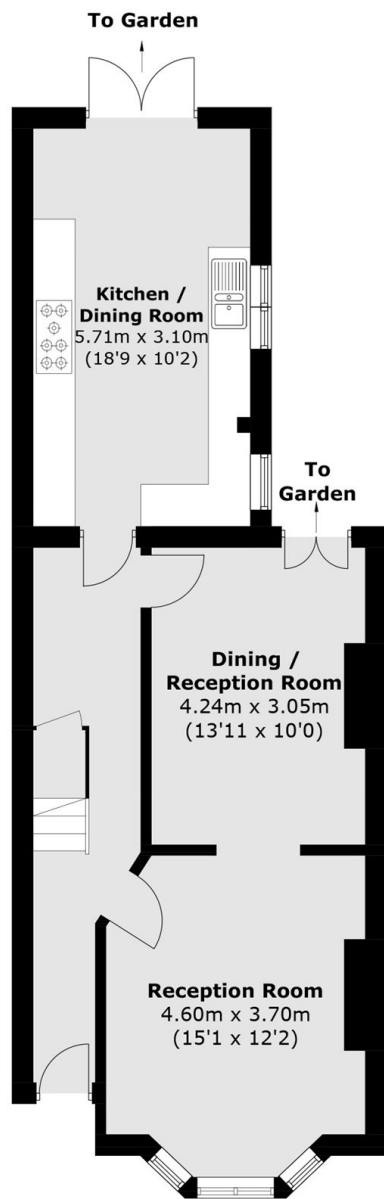
- Period/Edwardian
- Scope To Extend (STPP)
- 1,775 sqft Living Space
- No Onward Chain
- South Facing Garden
- Income-producing Outbuilding



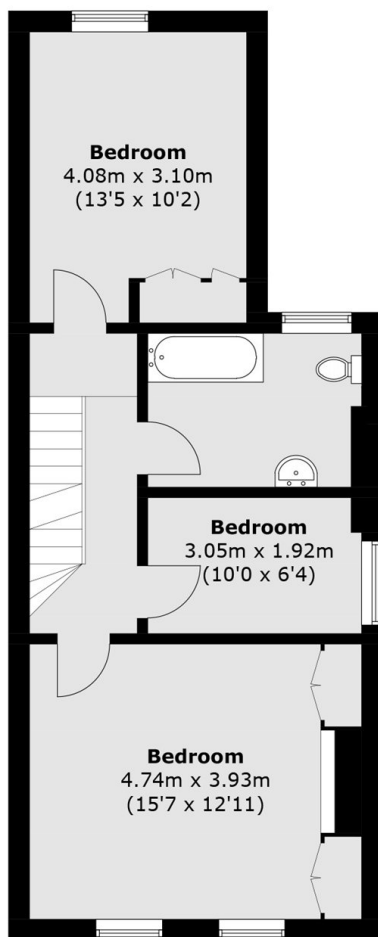




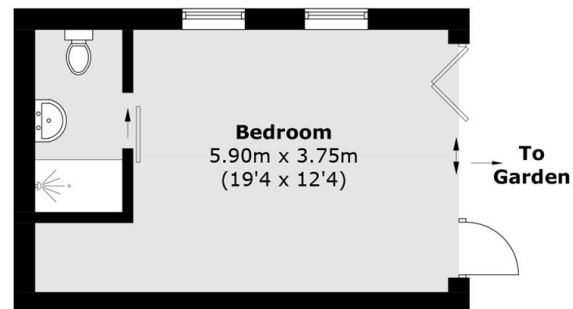
Oldfield Road, Hampton, TW12



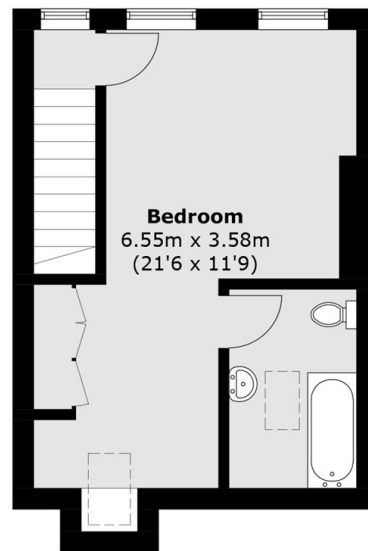
Ground Floor



First Floor



Garden Flat
(Not Shown In Actual
Location / Orientation)



Second Floor

Total House Area: 142.3 sq. m (1531.7 sqft)

Outbuilding Area: 22.6 sq. m (243.3 sqft)

Total Area of House and Outbuilding: 164.9 sq. m (1775 sqft)