



Mexfield Road, SW15

£850,000

Dexters



Mexfield Road, SW15

A beautifully presented two double bedroom garden flat offering 780 sq ft of well-balanced living space, perfectly positioned on a quiet residential road in the heart of East Putney.

The property features a generous kitchen/reception room with a contemporary fitted kitchen and ample space for dining and entertaining, opening directly onto a private rear garden. The garden is thoughtfully landscaped with a patio seating area and low-maintenance lawn - ideal for summer gatherings and outdoor dining.

There are two well-proportioned double bedrooms, including a spacious principal bedroom with built-in storage, served by a modern bathroom. The layout is practical and well designed, with good separation between living and sleeping accommodation.

Mexfield Road is conveniently located for the amenities of Putney High Street, with its selection of shops, cafés and restaurants. Excellent transport links are close by including Putney mainline station (direct to Waterloo), East Putney Underground station (District Line) and a number of bus routes, providing easy access into Central London and beyond. The green open spaces of Wandsworth Park and the River Thames are also within easy reach.

Features

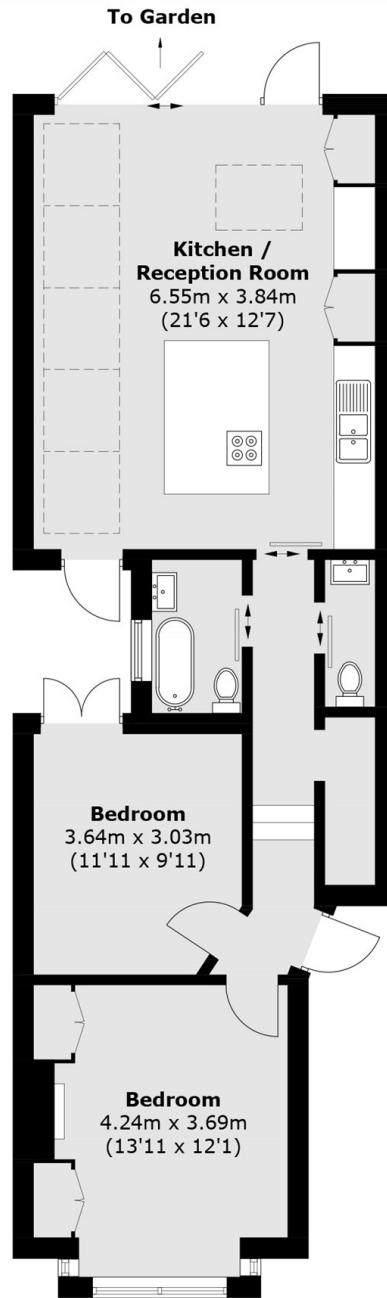
- 780 sq. ft
- Private Garden
- Two Bedrooms
- One Bathroom
- Period Property
- Share of Freehold







Mexfield Road, London, SW15



Ground Floor

Total area (approx.): 72.5 sq. m (780.3 sq. ft)