



**Guide Price**  
**£200,000**

**Freehold**

1x  1x  1x 

**Postmill Drive, Tovil Mill,  
Maidstone, Kent ME15**

*Wards*  
Helping you move forwards



## Main features

- Quiet location nearby to schools and shops
- Parking to the rear
- Perfect for first time buyers and investors alike

## Accommodation

### GROUND FLOOR

Entrance Porch  
 Lounge: 12'8 x 9'0 (3.86m x 2.75m)  
 Kitchen: 10'1 x 6'9 (3.08m x 2.06m)

### FIRST FLOOR

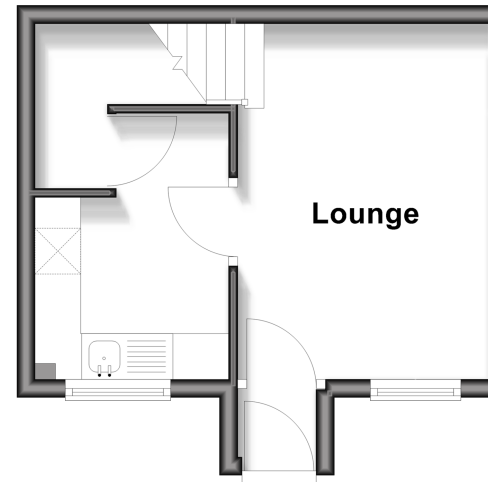
Landing  
 Bedroom 1: 12'9 x 9'8 (3.89m x 2.95m)  
 Bathroom

### OUTSIDE

Parking To Rear

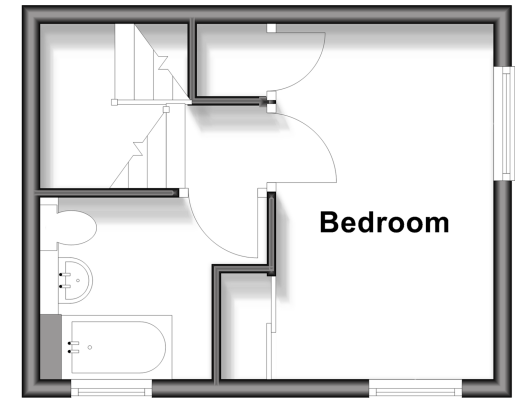
### Ground Floor

Approx. 20.1 sq. metres (216.0 sq. feet)



### First Floor

Approx. 19.4 sq. metres (208.5 sq. feet)



Call Maidstone - 01622 683737 ■ [wardsofkent.co.uk](http://wardsofkent.co.uk)

■ Legal advice should be taken to verify fixtures/fittings, planning, alterations and/or lease details

■ Appliances & services are untested, dimensions are approximate and floor plans are not to scale



13159022/20260128/CV/TB