

BUTLER & STAG



Steward House, Bow, E3
London

Guide Price £440,000



Steward House, Bow, E3

London

A beautifully designed 755 Sq/Ft two-bedroom, two-bathroom modern apartment set within the sought-after Steward House, Bow E3. This contemporary home has been thoughtfully planned to maximise space, light, and functionality.

- Residential Complex With Secure Entry Phone System
- 180 Degree Wrap Around Terrace/Garden
- Bow Road Tube Station and Bow Church DLR A Moments Walk Away
- Open Plan Concept Living Space
- Two Bedrooms
- 755 Sq/Ft Internal Living Space
- Two Bathrooms
- Bicycle Storage



The apartment features a stylish open-plan living, dining and kitchen area, creating an ideal setting for both everyday living and entertaining. Floor-to-ceiling glazing floods the space with natural light and opens directly onto a spectacular 180-degree wrap-around terrace, offering exceptional outdoor living experience rarely found in apartments of this size.

Both bedrooms are generously proportioned, with the principal bedroom benefiting from a sleek ensuite bathroom, while a second modern bathroom serves guests and the second bedroom. High-quality finishes, clean lines, and a neutral palette throughout enhance the apartment's contemporary feel.

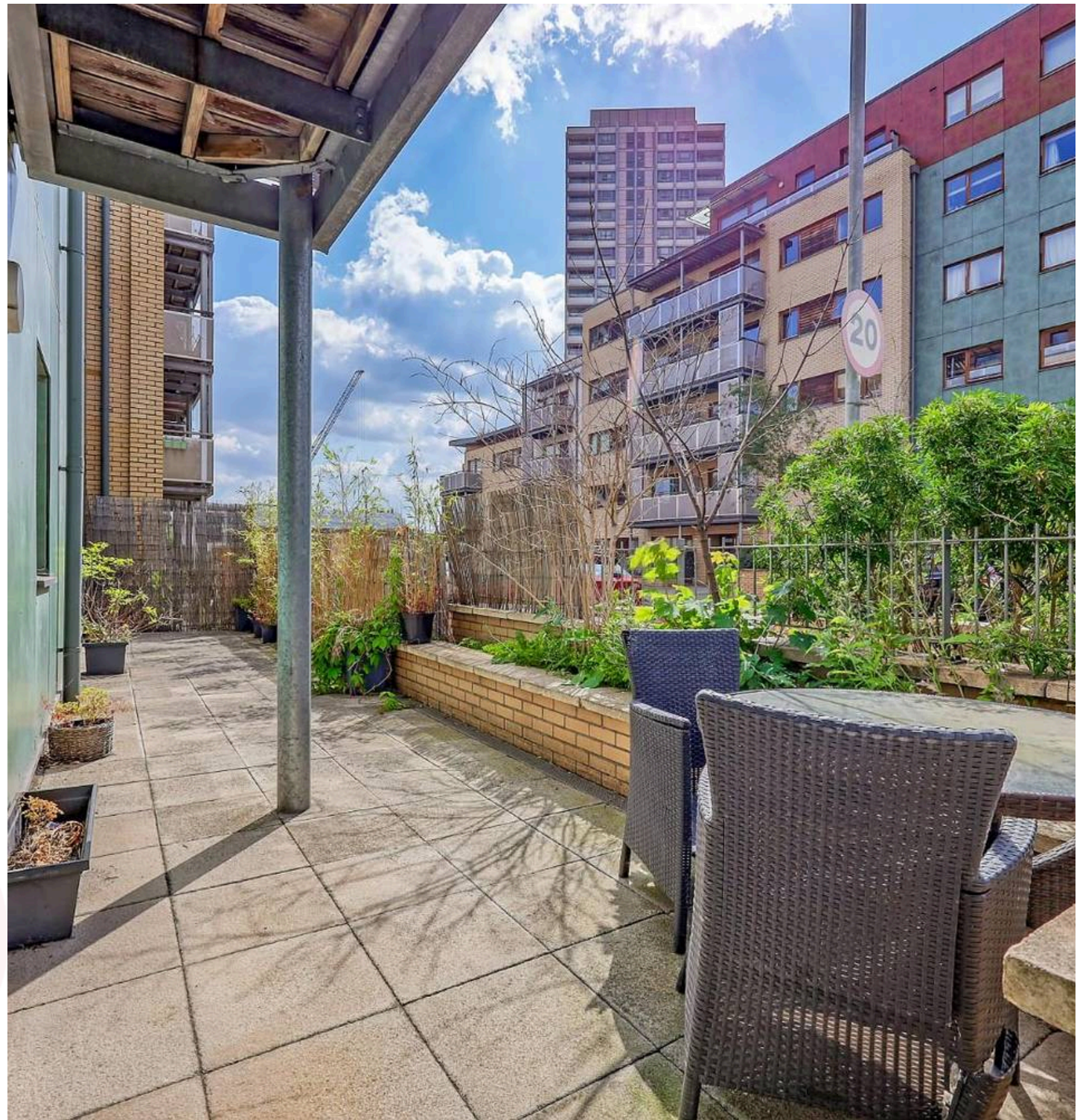
Located in the heart of Bow E3, Steward House offers excellent access to local amenities, green spaces, and transport links, making this an ideal home for professionals, couples, or investors seeking modern city living with standout outdoor space.

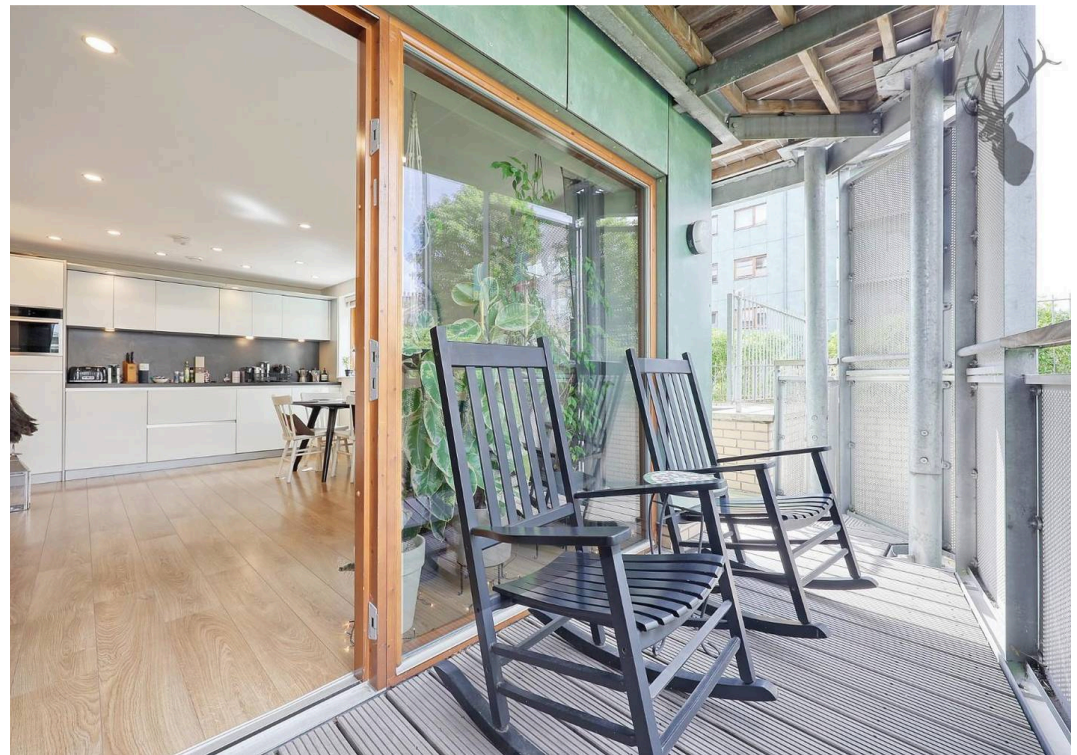
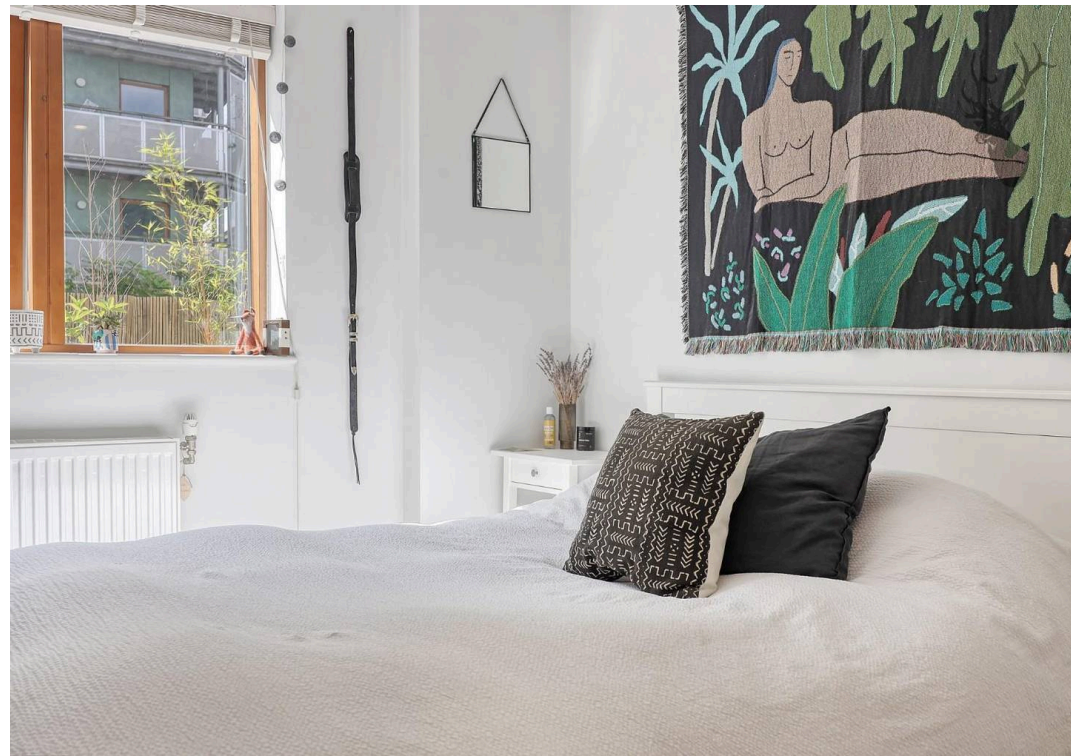
Council Tax band: D

Tenure: Leasehold

EPC Energy Efficiency Rating: B

EPC Environmental Impact Rating: B







Steward House

Approx. Gross Internal Area 70.2 sq. metres (755.2 sq. feet)

Ground Floor



Measurements are approximate and for illustration purposes only. While we do not doubt the accuracy and completeness, we advise you conduct a careful independent assessment of the property to determine monetary value

FROM EAST LONDON ENERGY TO WEST ESSEX EASE

We Make Moving Home Easy.

At Butler and Stag, we do more than just connect London to West Essex – we make the move seamless. With offices spanning from vibrant East London to the tranquillity of West Essex, we understand the nuances of each area and the journey people take between them. Our marketing goes beyond standard listings, showcasing every property with precision, creativity, and reach that others simply can't match. Coupled with an unparalleled attention to detail, from first enquiry to final move-in, we ensure every client and customer feels informed, supported, and confident. Simply put, we do the little things that make a big difference, setting us apart in every step of the property experience.



LONDON STRATFORD SOUTH WOODFORD BUCKHURST HILL LOUGHTON EPPING BEYOND

Like what you see? Let's talk

Book your **FREE** valuation now



020 8102 1236

london@butlerandstag.com

508 Roman Road, Bow, London, E3 5LU

butlerandstag.uk

IMPORTANT NOTICE - These particulars have been prepared in good faith and they are not intended to constitute part of an offer or contract. We have not performed a structural survey on this property and the services, appliances and specific fittings have not been tested. All photographs, measurements, floor plans and distances referred to are given as a guide and should not be relied upon.

BUTLER & STAG

