

Waterside

Uxbridge • Middlesex • UB8 2LG

PCM: £1,650 PCM



coopers
est 1986

A modern and spacious two bedroom, one bathroom apartment to rent located just a short distance from Uxbridge Town Centre/Underground Station and West Drayton High Street/Station.

Features include two double bedrooms, spacious lounge, newly refurbished kitchen with integrated appliances, Modern bathroom with shower cubicle, garage and allocated parking.

Available unfurnished

Spacious Two Bedroom Apartment with Garage

One bathroom

Kitchen with Integrated Appliances

New Bathroom with Shower

Spacious Lounge

Allocated Parking

Easy Access to West Drayton High Street

Nearby to West Drayton/Uxbridge Stations

Within Close Proximity to Uxbridge High Street

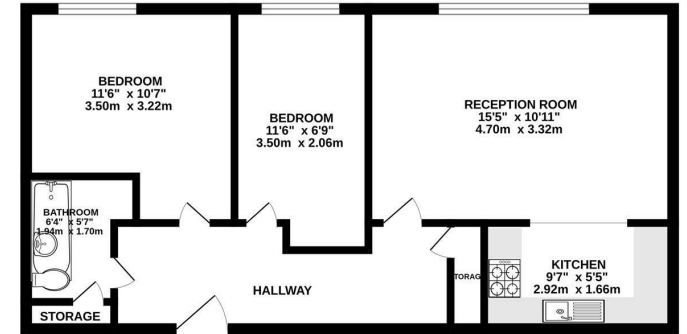
Unfurnished

Available Date

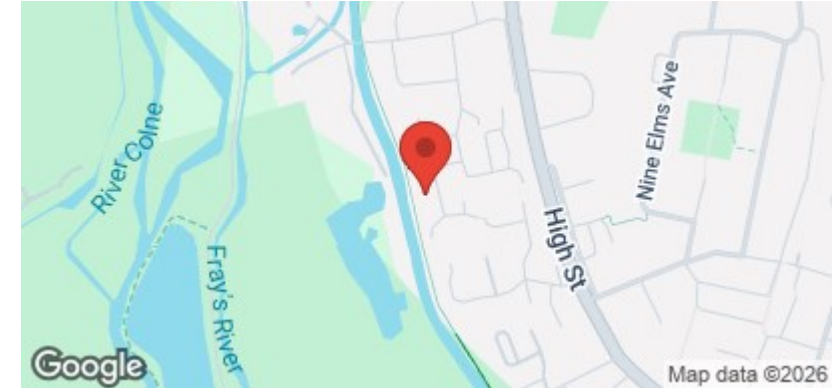
25th April 2026



GROUND FLOOR
533 sq.ft. (49.5 sq.m.) approx.



TOTAL FLOOR AREA: 533 sq.ft. (49.5 sq.m.) approx.
Whilst every attempt has been made to ensure the accuracy of the floorplan contained herein, measurements of areas, windows, rooms and any other items are approximate and no responsibility is taken for any error, omission or mis-statement. This plan is for illustrative purposes only and should be used as such by any prospective purchaser. The services, appliances and appliances shown have not been tested and no guarantee as to their conditionality or efficiency can be given.
Made with Metropop ©2026



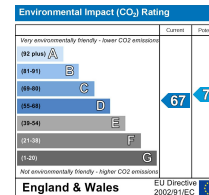
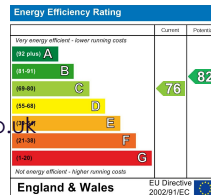
coopers
est 1986

01895 257 566

**1 Vine Street, Uxbridge,
Middlesex, UB8 1QE**

propertymanagement@coopersresidential.co.uk

CoopersResidential.co.uk



Important Notice: These particulars, whilst believed to be accurate are set out as a general outline only for guidance and do not constitute any part of an offer or contract. Intending purchasers should not rely on them as statements or representation of fact, but must satisfy themselves by inspection or otherwise has the authority to make or give any representation or warranty in respect of the property.