









This exceptional double fronted, four bedroom detached house features a beautifully remodelled, stylish interior. Internally the immaculate accommodation includes a hall with a staircase to the first floor, a superb lounge that is open plan with a fabulous dining kitchen, fitted with a range of modern units and French doors to the rear garden. There is a versatile room, currently utilised as a snug, a utility and a cloakroom/wc, completing the ground floor. On the first floor, the main bedroom has a contemporary en-suite shower room/wc, there are three further bedrooms and a modern family bathroom/wc. Externally there is driveway parking to the rear, along with a single garage and to the rear, a wonderful, generous garden with a lawn and a decked area. The property enjoys a pleasant aspect to the front, overlooking a green within this attractive modern development, well positioned for local amenities as well as offering links to major road connections. Viewing is highly recommended!

MAIN ROOMS AND DIMENSIONS

Ground Floor

Access via Composite entrance door.

Reception Hall



Radiator and staircase to first floor.

Snug 10'8" x 9'9"



Double glazed window to front and radiator.

Lounge 13'2" x 10'8"



Double glazed window to front, column radiator, built into media wall with electric fire, and radiator. Opening into dining kitchen.

Dining Kitchen 20'3" x 9'5"



Modern fitted kitchen with working surfaces over incorporating 1 1/2 bowl stainless steel sink and drainer unit with mixer tap. Integrated oven, electric hob and cooker hood, dishwasher, fridge and freezer. Double glazed window and UPVC French doors to rear. Built in seating and storage. Door to utility.

Utility 6'2" x 5'2"



Wall and base units with working surfaces over. Space for washing machine. Radiator and Composite door to rear. Door to cloakroom/WC.

Cloakroom/WC



Low level WC and washbasin, double glazed window to rear and radiator.

First Floor Landing



Double glazed window, storage cupboard and access point to loft.

Visit www.peterheron.co.uk or call 0191 510 3323

Tried. Trusted. Recommended. City Branch 20 Fawcett Street Sunderland SR1 1RH Fulwell Branch 15 Sea Road Fulwell Sunderland SR6 9BS

MAIN ROOMS AND DIMENSIONS

Bedroom 1 11'5" x 10'11"



Double glazed window to rear and radiator. Door to en suite.

En-Suite Shower Room



Low level WC, washbasin and walk in shower cubicle, heated towel rail and double glazed window.

Bedroom 2 11'6" x 8'5"



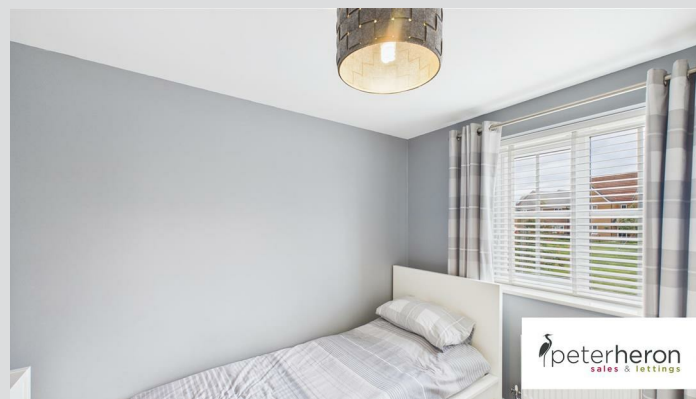
Double glazed window to front and radiator.

Bedroom 3 9'9" x 8'11"



Double glazed window to front and radiator.

Bedroom 4 8'2" x 7'8"



Double glazed window to front and radiator.

Bathroom



Low level WC, washbasin and bath, double glazed window and radiator.

Outside



Garden to front with residents parking. Impressive garden to the rear mainly laid to lawn, with decked seating area.

The Garden at Evening



Council Tax Band

The Council Tax Band is Band D.

Tenure Freehold

We are advised by the Vendors that the property is Freehold. Any prospective purchaser should clarify this with their Solicitor.

Important Notice - Particulars

Peter Heron Ltd for themselves and for the vendors of this property whose agents they are, give notice that:- The particulars are set out for general guidance only for the intending Purchasers and do not constitute part of an offer

MAIN ROOMS AND DIMENSIONS

or contract. Whilst we endeavour to make our sales particulars accurate and reliable, if there is anything of particular importance which you feel may influence your decision to purchase, please contact the office and we will be pleased to check the information. Do so particularly, if contemplating travelling some distance to view the property. All descriptions, dimensions, references to conditions and necessary permissions for use and occupation and other details are given in good faith, and are believed to be correct, however any intending purchasers should not rely on them that statements are representations of fact, but must satisfy themselves by inspection or otherwise as to the correctness of each of them. Independent property size verification is recommended.

Lease details, service charges and ground rent (where applicable) are given as a guide only and should be checked and confirmed by your Solicitor prior to exchange of contracts. No person in the employment of Peter Heron Ltd has any authority to make or give any representation or warranty whatever in relation to this property or these particulars, nor to enter into any contract on behalf of Peter Heron Ltd, nor into any contract on behalf of the Vendor. The copyright of all details and photographs remain exclusive to Peter Heron Ltd.

Please note that in the event the purchaser uses the services of Peter Heron Conveyancing in the purchase of their home, Peter Heron Ltd will be paid a completion commission of £300.00 by Movewithus Ltd.

Fawcett Street Viewings

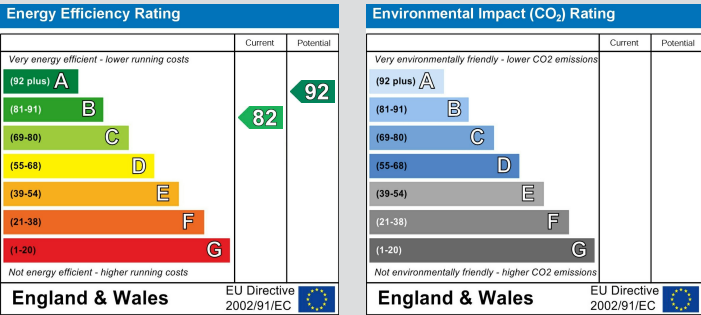
To arrange an appointment to view this property please contact our Fawcett Street branch on or book viewing online at peterheron.co.uk

Opening Times

Monday to Friday 9.00am - 5.00pm Saturday 9.00am - 12noon

Ombudsman

Peter Heron Estate Agents are members of The Property Ombudsman and subscribe to The Property Ombudsman Code of Practice.



Visit www.peterheron.co.uk or call 0191 510 3323

Tried. Trusted. Recommended. City Branch 20 Fawcett Street Sunderland SR1 1RH Fulwell Branch 15 Sea Road Fulwell Sunderland SR6 9BS



Floor 0 Building 1

Approximate total area⁽¹⁾
105 m²



Floor 1 Building 1

(1) Excluding balconies and terraces

Calculations reference the RICS IPMS 3C standard. Measurements are approximate and not to scale. This floor plan is intended for illustration only.

GIRAFFE360